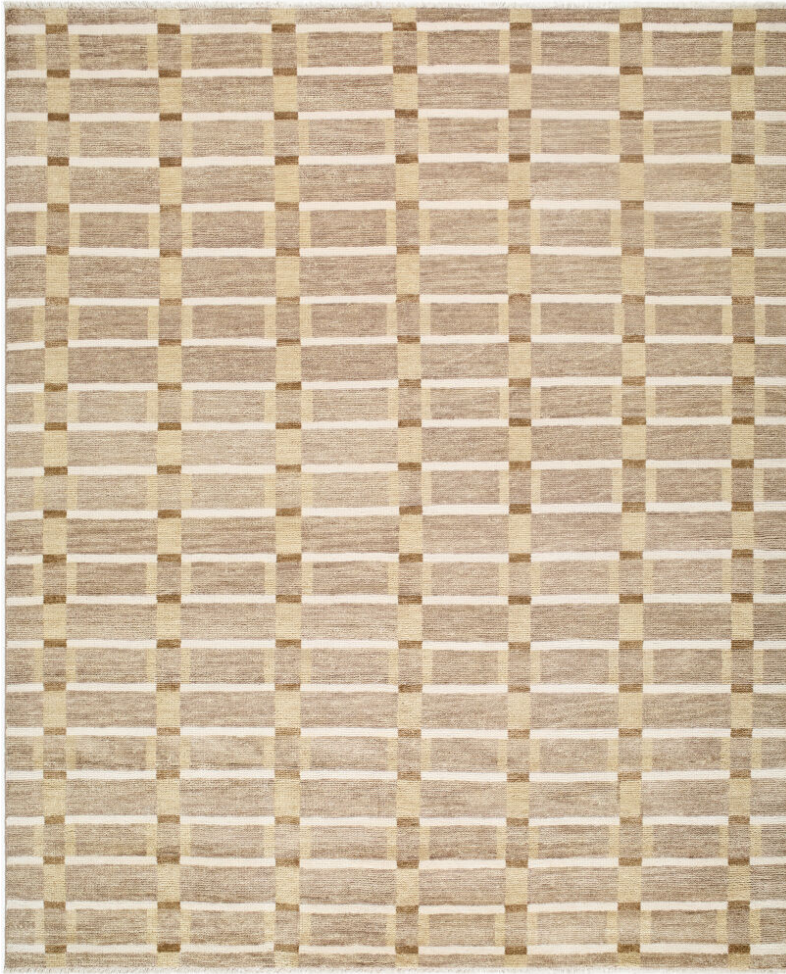


# SURYA

**Riviera** RIV-2309



## DETAILS

80% NZ Wool, 20% Cotton

Hand Knotted

Low Pile

Thickness: 0.24"

Made in India

## SIZES

2' x 3'

6' x 9'

8' x 10'

9' x 12'

10' x 14'

3' x 10'

18" Sample

Custom Sizes Available