

If you have a problem, question, or request, call your local dealer, or Steelcase Line 1 at **888.STEELCASE** (888.783.3522) for immediate action by people who want to help you.

(Outside the U.S.A., Canada, Mexico, Puerto Rico, and the U.S. Virgin Islands, call: 1.616.247.2500)

Or visit our website: www.steelcase.com

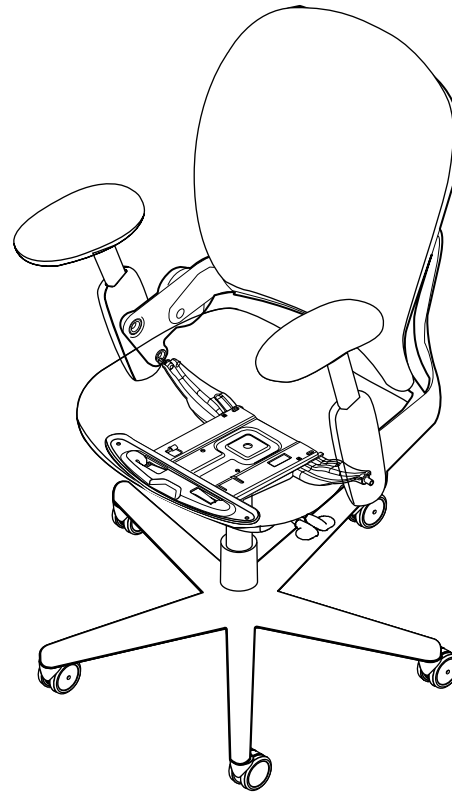
© 2000 Steelcase Inc.
Grand Rapids, MI 49501
U.S.A.

Printed in U.S.A.

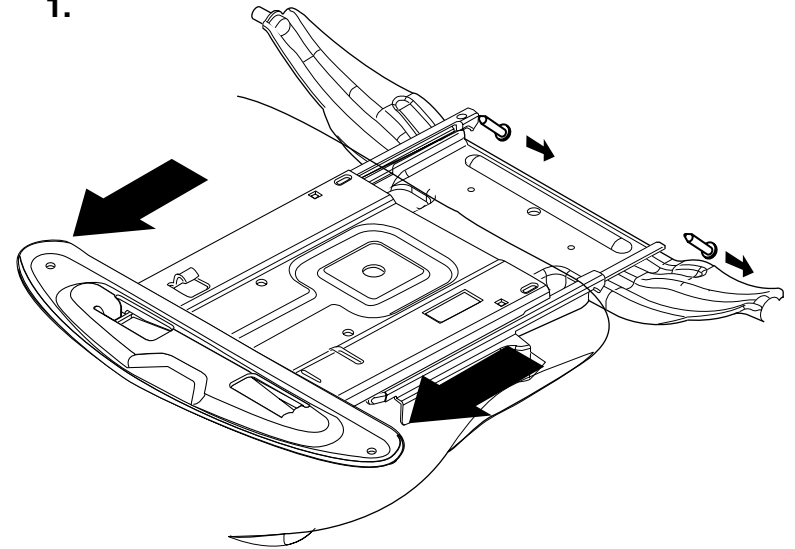


Standard Seat Upholstery with Fixed Seat

1. Remove screws (2) and slide seat off.



1.

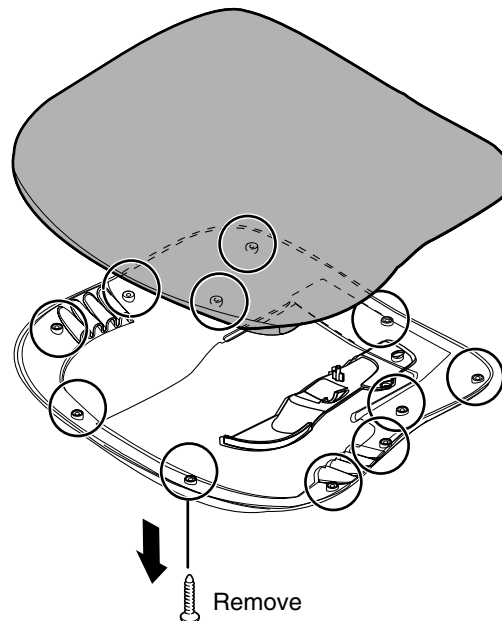


2. Remove shell screws (11).

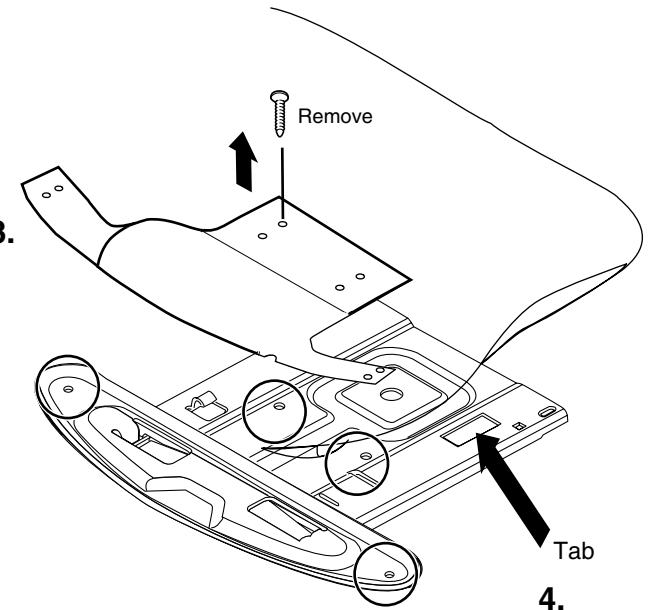
3. Remove seat support plate screws (4).

4. Reassemble with new cushion assembly.
Make sure plate is captured in tabs.

2.



3.

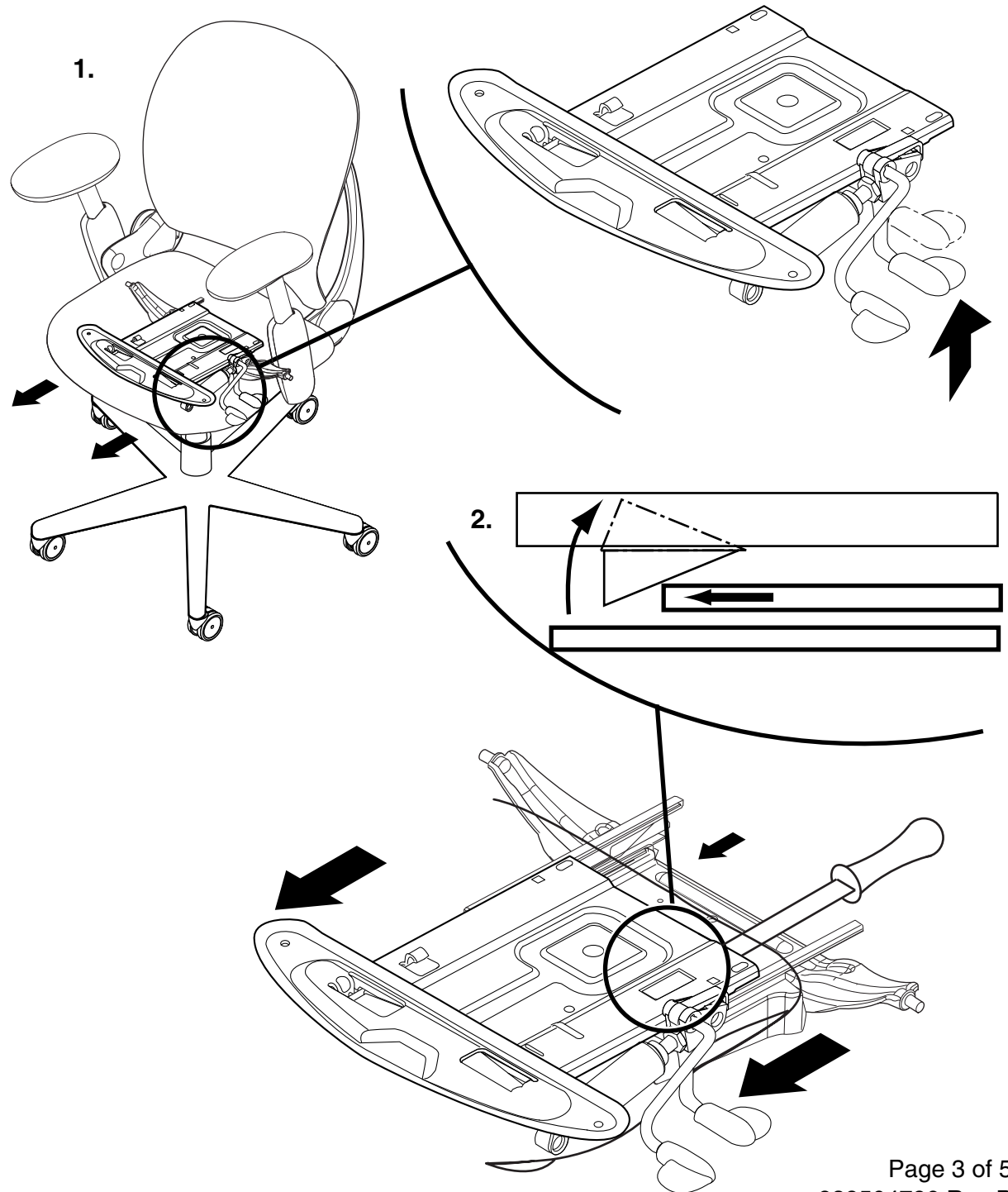


4.

Standard Seat Upholstery with Adjustable Depth Seat

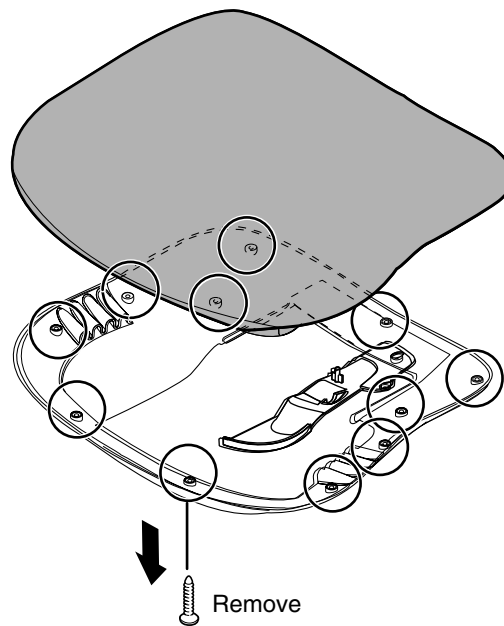
1. Slide seat fully forward while holding side lever.

2. Disengage quick release located on the left hand side of the chair between plates and remove the seat.



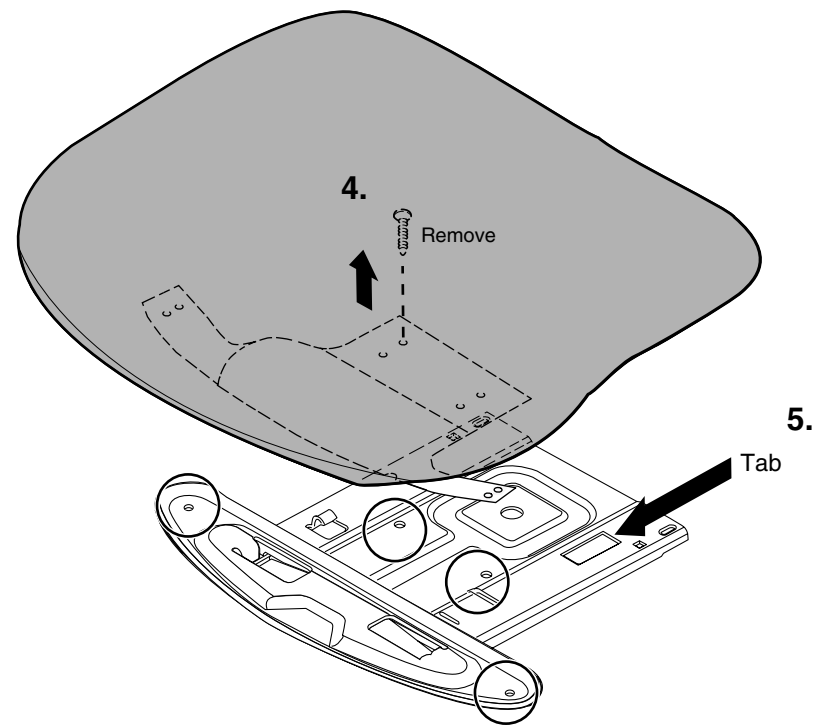
Standard Seat Upholstery with Adjustable Depth Seat (cont.)

3. Remove shell screws (11).



4. Remove front panel screws (4).

5. Reassemble with new cushion assembly. Make sure plate is captured in tab.



Pillow Upholstery Seat

- 1.** Unsnap (6) locations.
- 2.** Reinstall new pillow seat.

