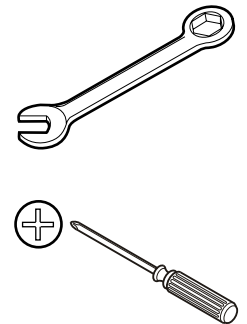
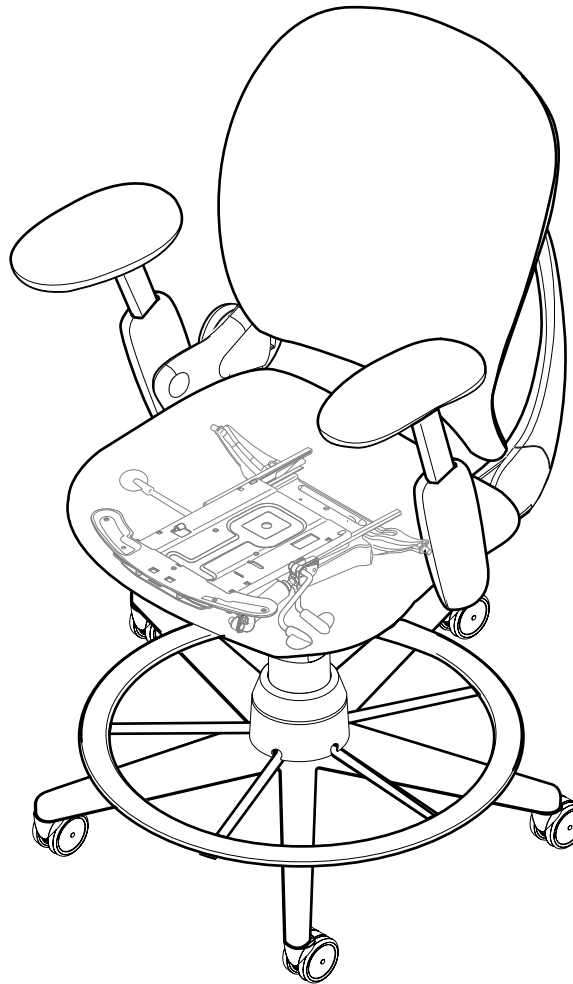


462 Leap® Fixed and Depth Seat Replacement (For chairs manufactured prior to July 18, 2005)



If you have a problem, question, or request, call
your local dealer, or Steelcase Line 1 at
888.STEELCASE (888.783.3522)
for immediate action by people who want to help you.

(Outside the U.S.A., Canada, Mexico, Puerto Rico,
and the U.S. Virgin Islands, call: 1.616.247.2500)

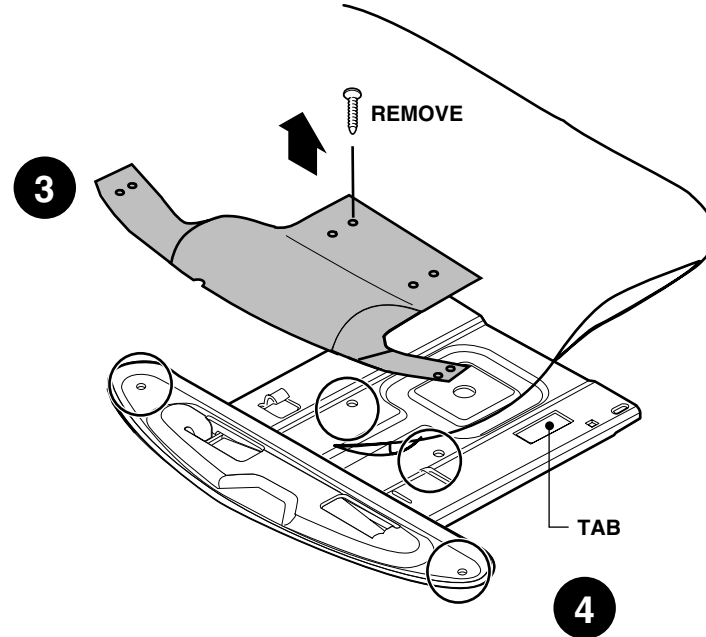
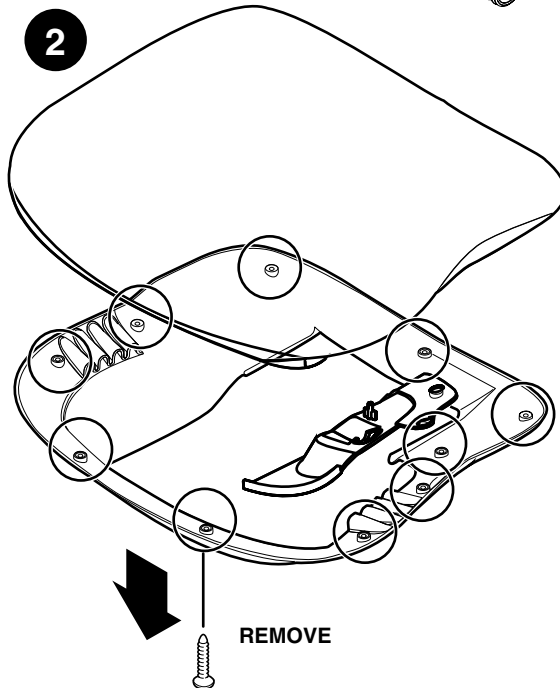
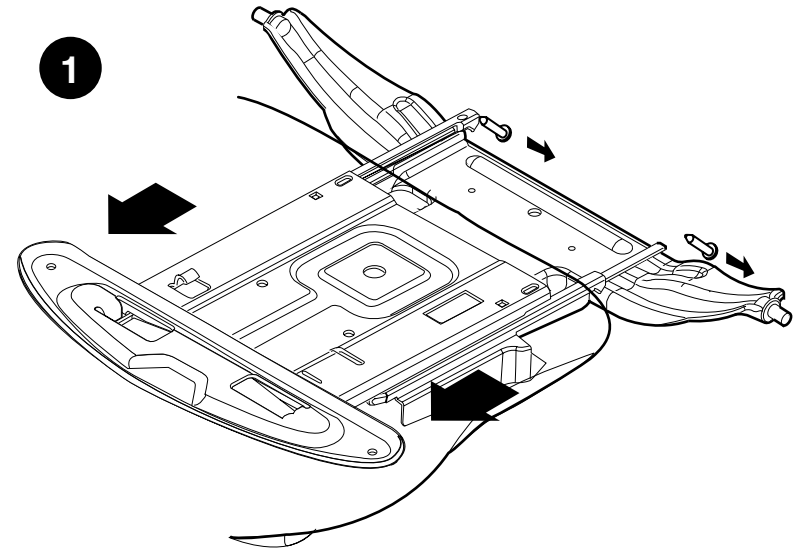
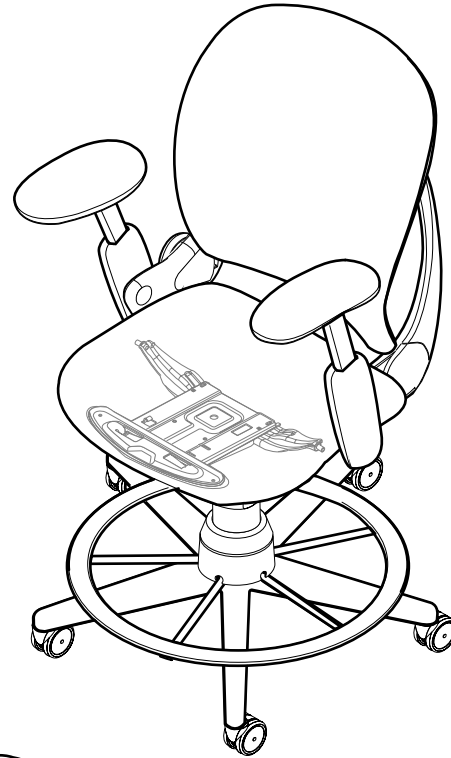
Or visit our website: www.steelcase.com

© 2003 Steelcase Inc.
Grand Rapids, MI 49501
U.S.A.

Printed in U.S.A.

Fixed Seat

1. Remove screws (2) and slide seat off.
2. Remove shell screws (10).
3. Remove seat support plate screws (4).
4. Reassemble. Make sure plate is captured in tab.

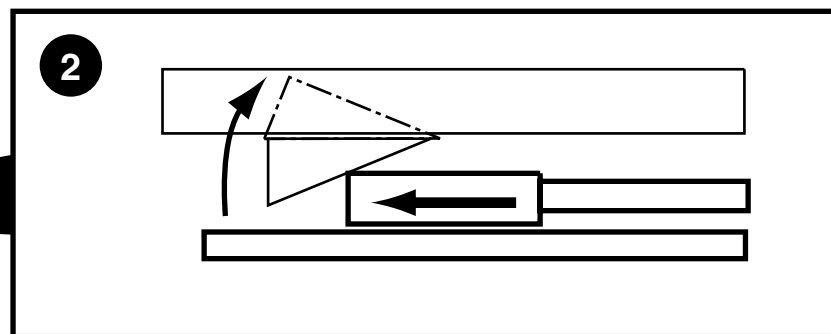
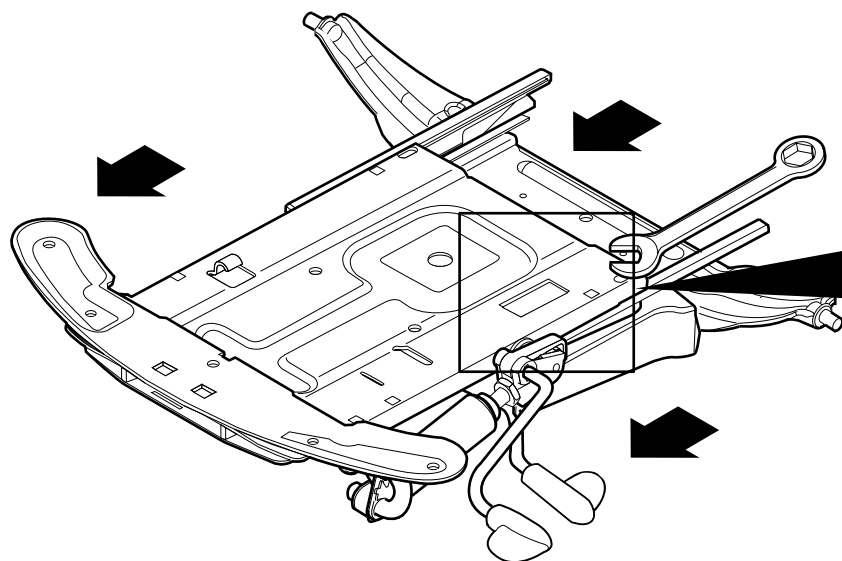
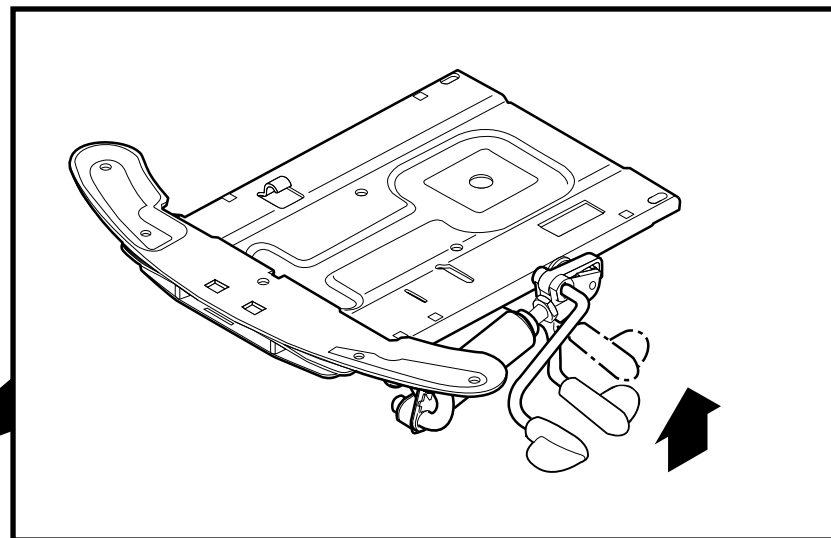
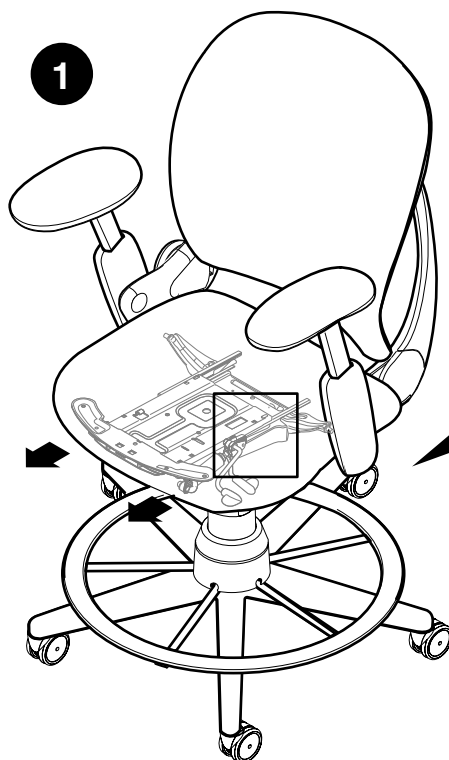


4

TAB

Depth and Angle Seat

1. Slide seat fully forward while holding side lever.
2. Disengage quick release located on the left hand side of the chair between plates.



Depth and Angle Seat

3. Remove shell screws (11).
4. Remove front panel screws (4).
5. Reassemble. Make sure plate is captured in tab.

