

**Pneumatic Cylinder
Removal Tool**

If you have a problem, question, or request, call
your local dealer, or Steelcase Line 1 at
888.STEELCASE (888.783.3522)
for immediate action by people who want to help you.

(Outside the U.S.A., Canada, Mexico, Puerto Rico,
and the U.S. Virgin Islands, call: 1.616.247.2500)

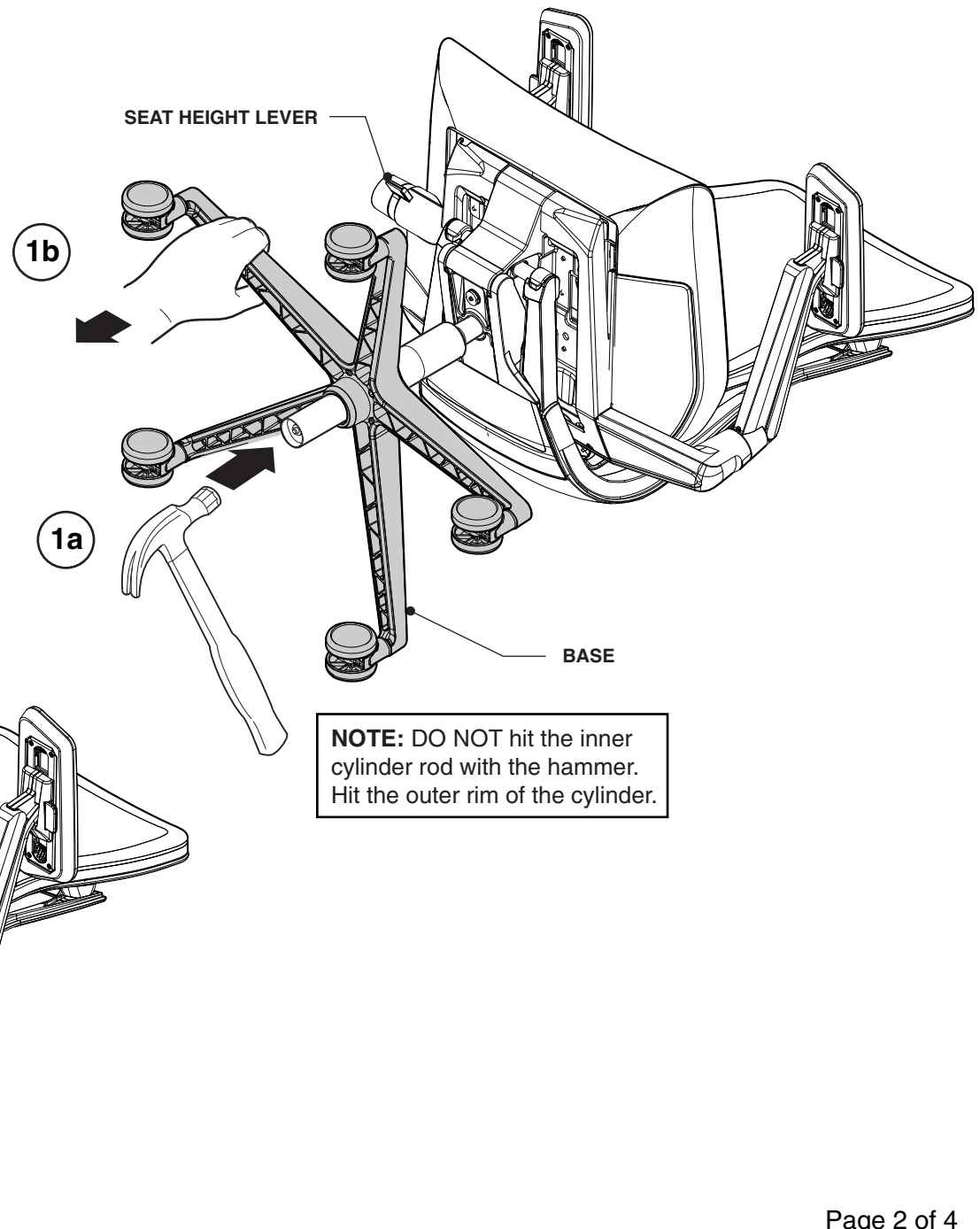
Or visit our website: www.steelcase.com

© 2013 Steelcase Inc.
Grand Rapids, MI 49501
U.S.A.

Printed in U.S.A.

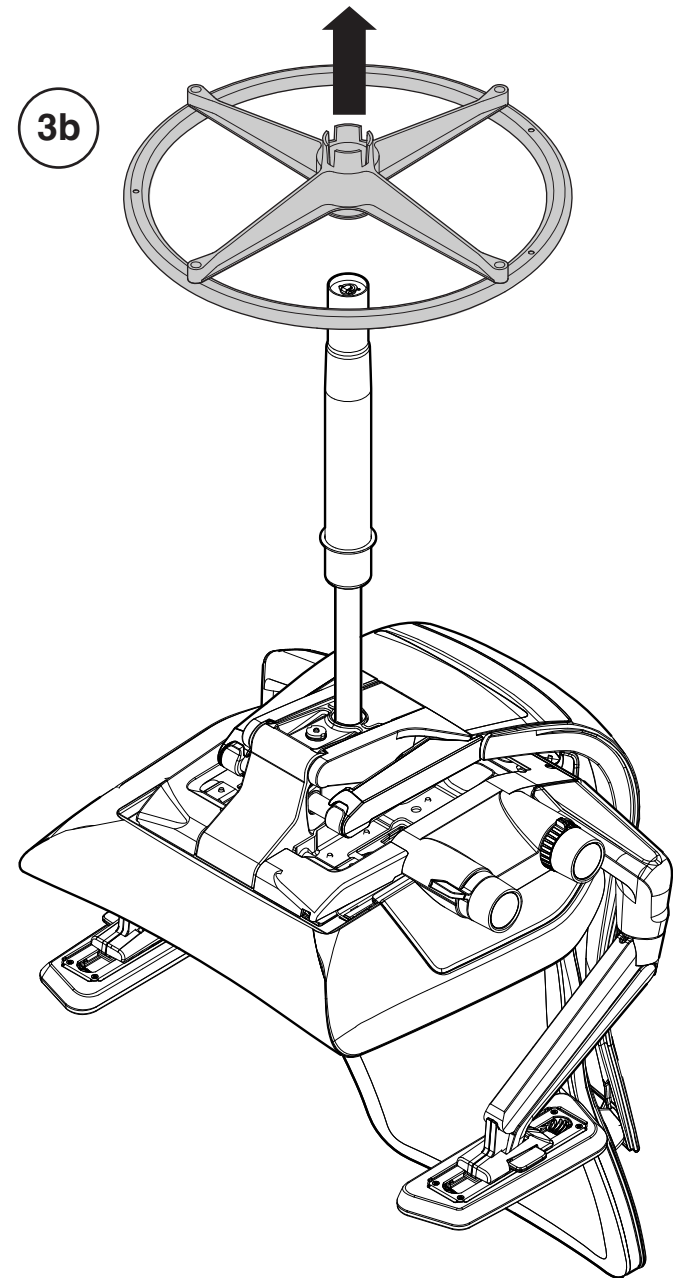
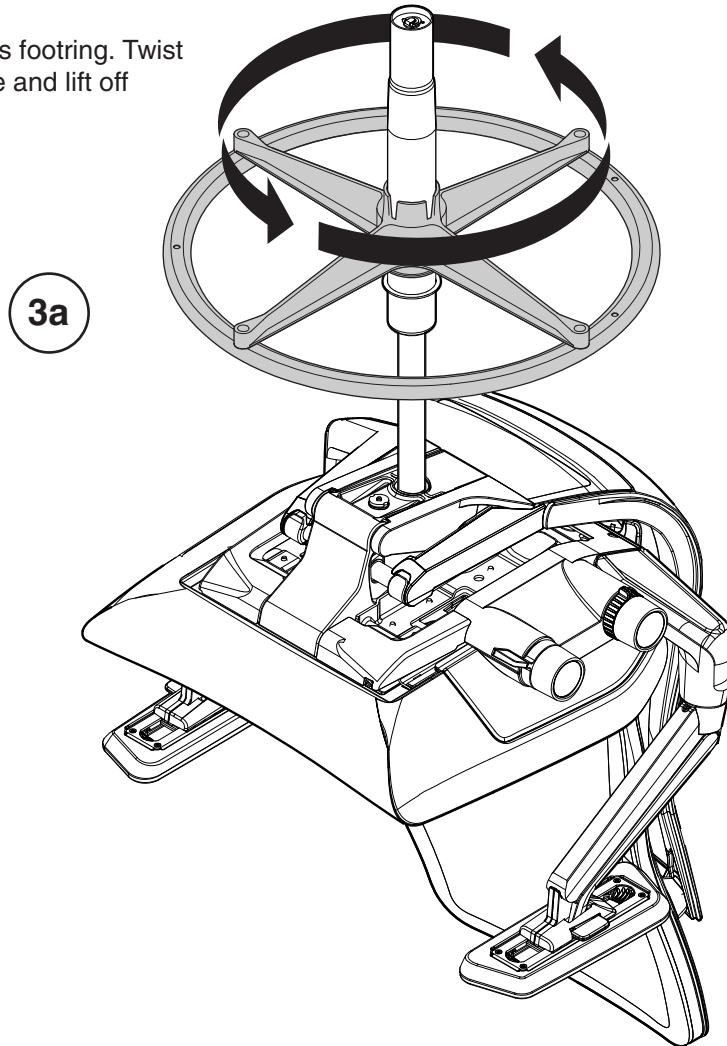
1. First, extend the cylinder to the highest position using the seat height lever. Next, lay chair on its side. Hit bottom of the cylinder with a hammer (1a) while pulling forward on the chair base (1b).

2. Remove chair base.



For Stool Chairs Only

3. Position chair to access footring. Twist footring counter clock-wise and lift off cylinder.



4. Secure cylinder removal tool, (P/N 879100100), to cylinder and remove cylinder as shown below.

5. Apply lifting force to the column with one hand. With the hammer in the other hand, give the removal tool several solid hits on the flat area.

TIP: If cylinder does not separate from control, apply WD-40 where lift is embedded into control. Wait approx. 20 minutes and repeat procedure.

6. Install cylinder, (foot ring for stools) and base. Sit in chair to seat replacement cylinder.

