

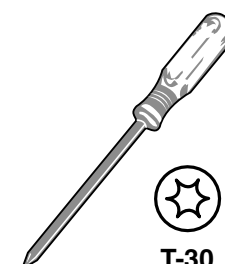
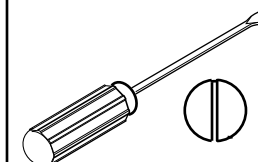
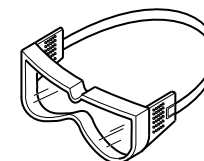
If you have a problem, question, or request, call your local dealer, or Steelcase Line 1 at **888.STEELCASE** (888.783.3522) for immediate action by people who want to help you.

(Outside the U.S.A., Canada, Mexico, Puerto Rico, and the U.S. Virgin Islands, call: 1.616.247.2500)

Or visit our website: www.steelcase.com

© 2013 Steelcase Inc.
Grand Rapids, MI 49501
U.S.A.

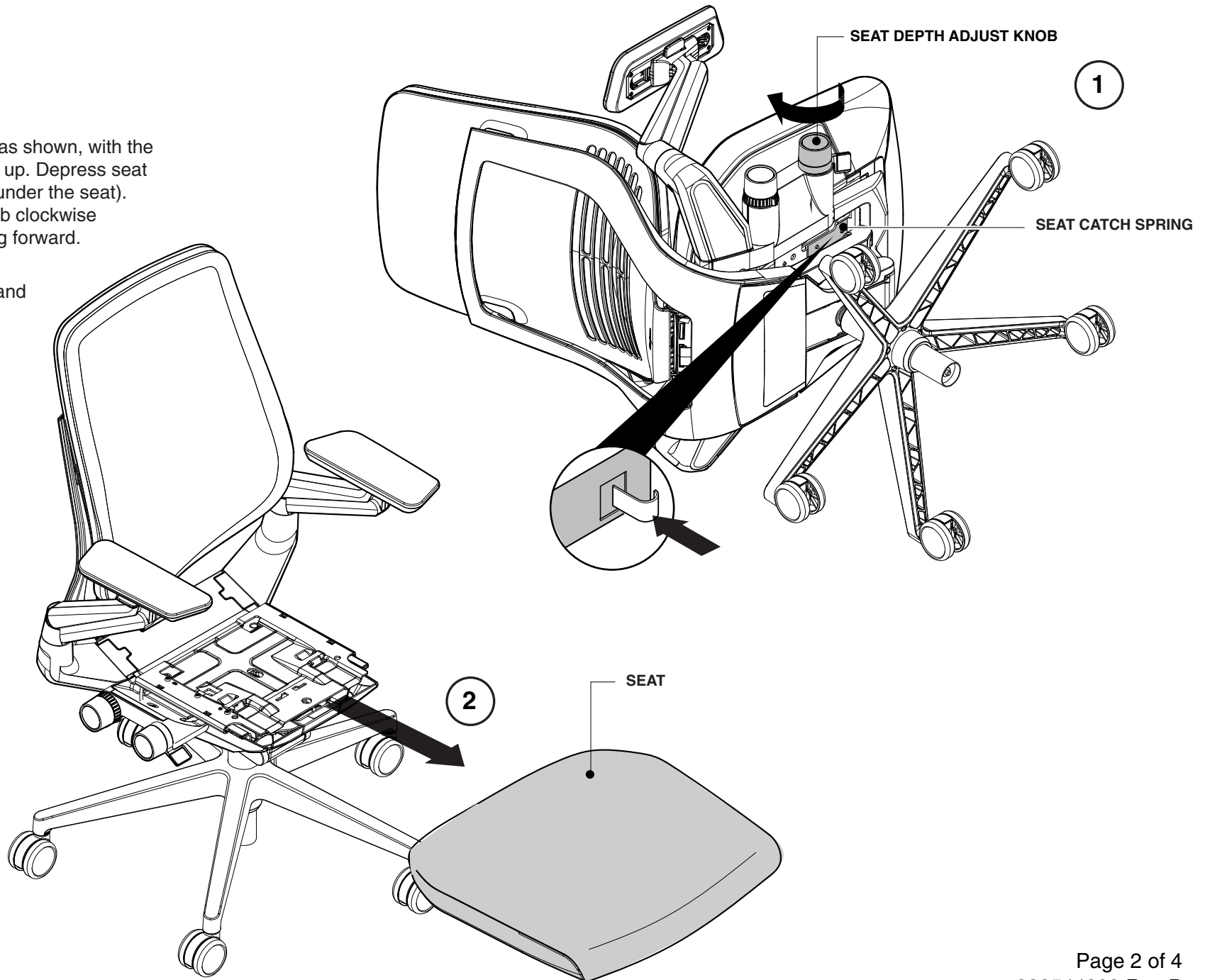
Printed in U.S.A.



**T-30
TORX**

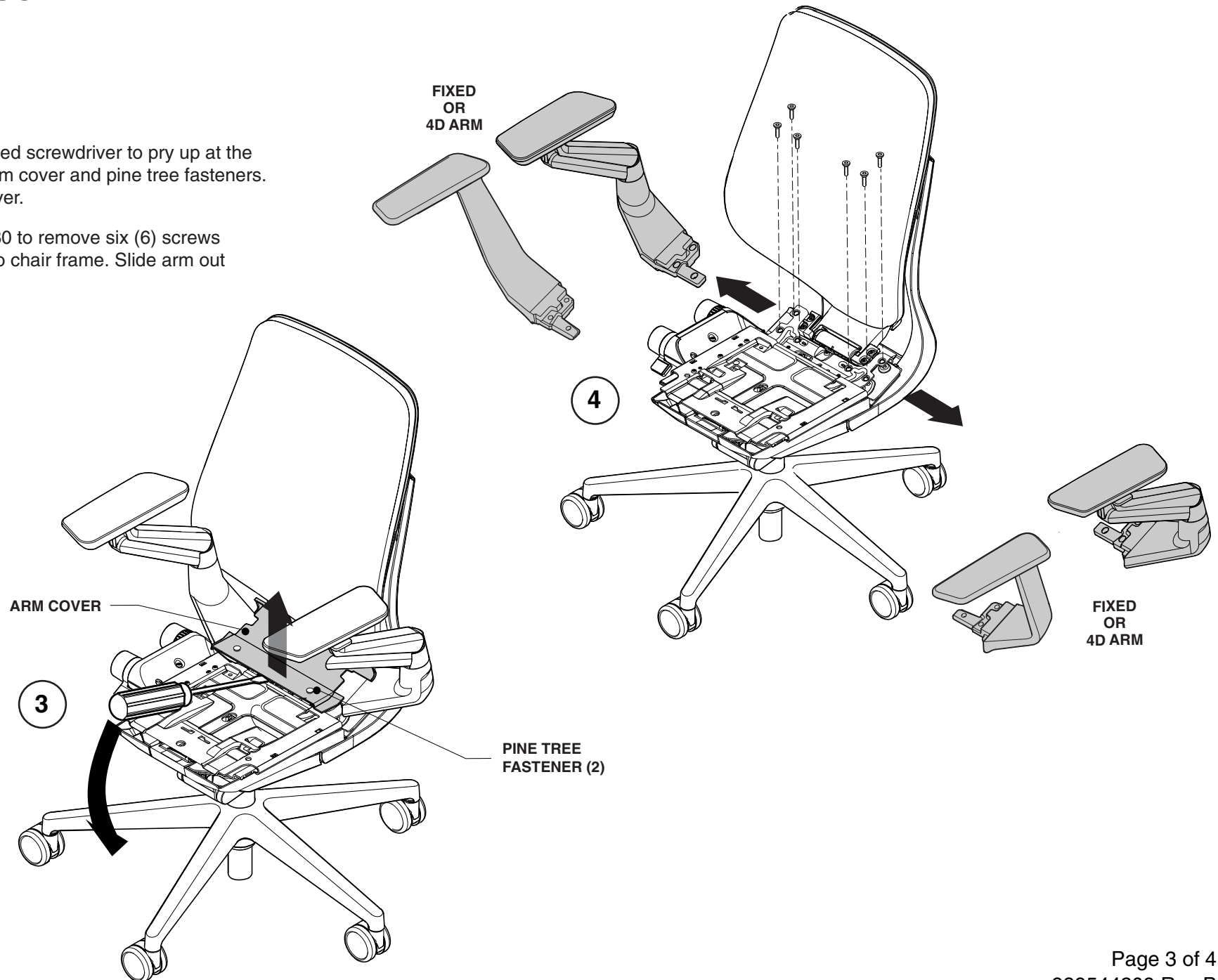
1. Lay chair on side as shown, with the control knobs pointing up. Depress seat catch spring (located under the seat). Rotate seat depth knob clockwise until seat stops moving forward.

2. Position chair up and pull seat off.



3. Use flat bladed screwdriver to pry up at the corners of the arm cover and pine tree fasteners. Remove arm cover.

4. Use Torx T-30 to remove six (6) screws attaching arms to chair frame. Slide arm out of each side.



5. Align and position replacement cover. Align holes and insert pine tree fasteners. Press firmly to chair frame to secure.

6. To reinstall seat cushion, slide seat on from the front until it stops. Turn seat depth adjust knob counter clock-wise until the seat stops moving backwards.

