

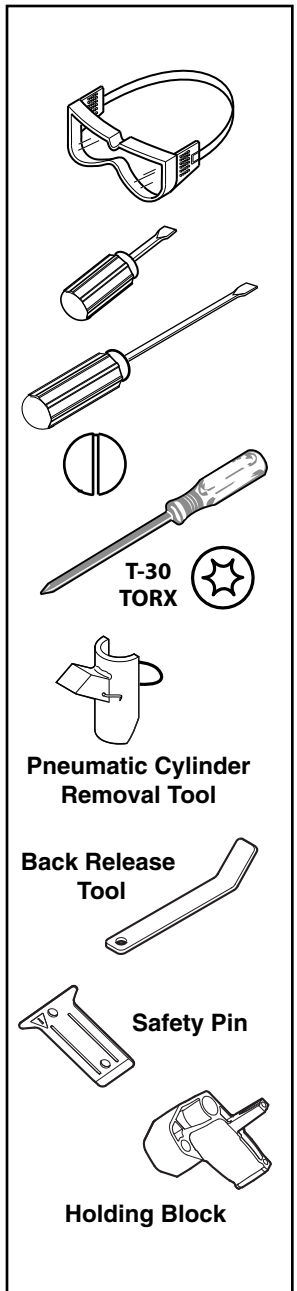
If you have a problem, question, or request, call your local dealer, or Steelcase Line 1 at **888.STEELCASE** (888.783.3522) for immediate action by people who want to help you.

(Outside the U.S.A., Canada, Mexico, Puerto Rico, and the U.S. Virgin Islands, call: 1.616.247.2500)

Or visit our website: www.steelcase.com

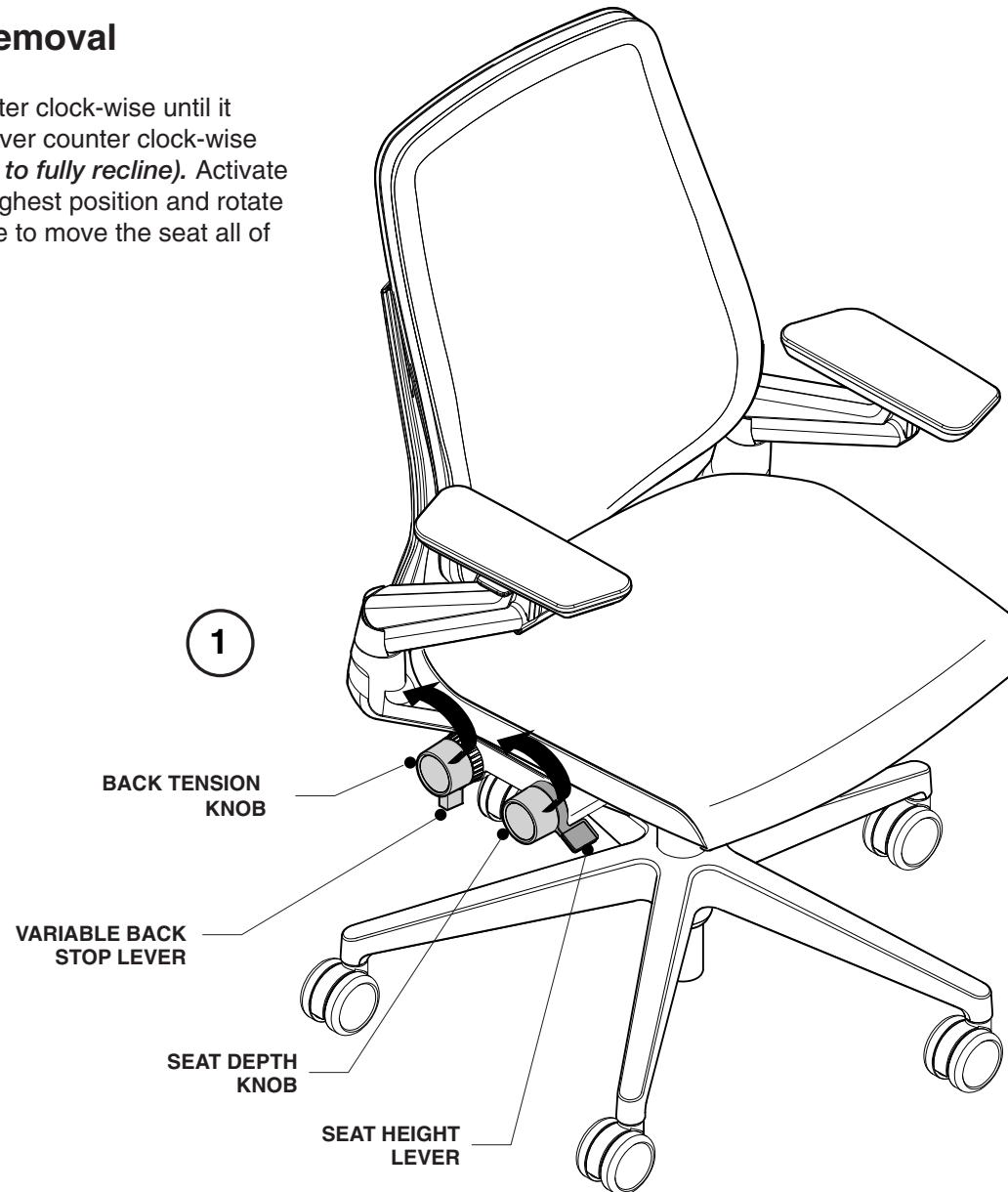
© 2013 Steelcase Inc.
Grand Rapids, MI 49501
U.S.A.

Printed in U.S.A.



Back and Can Cover Removal

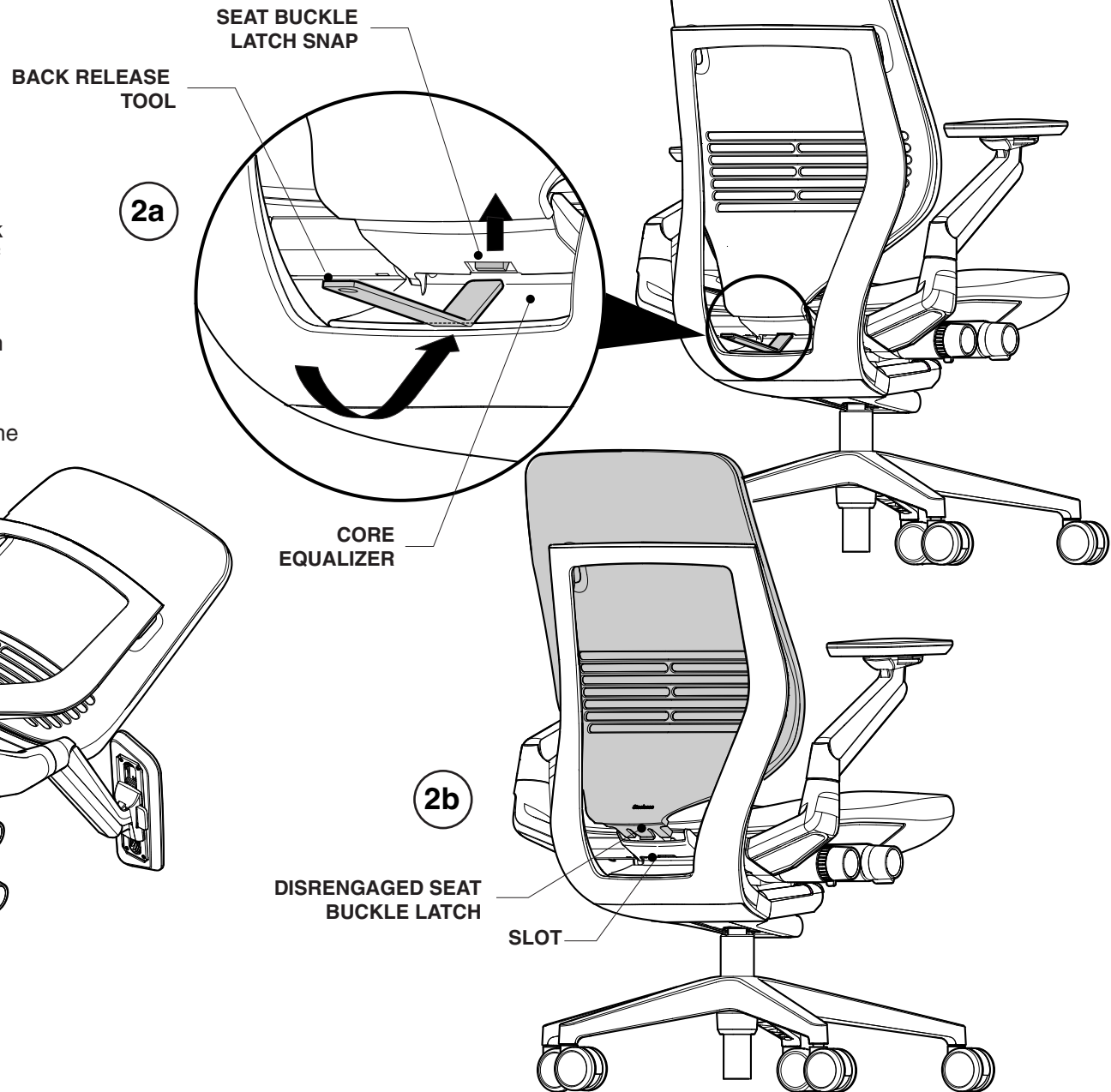
1. Rotate back tension knob counter clock-wise until it stops. Rotate variable back stop lever counter clock-wise until it stops. (*this allows the back to fully recline*). Activate seat height lever to raise seat to highest position and rotate seat depth knob counter clock-wise to move the seat all of the way back.



2. Place bent end of back release tool (p/n 442B2100) into slot of back buckle latch. Push down on end of back release tool to pivot bent end up, disengaging back buckle latch (2a) Pull bottom of back out of core equalizer (2b).

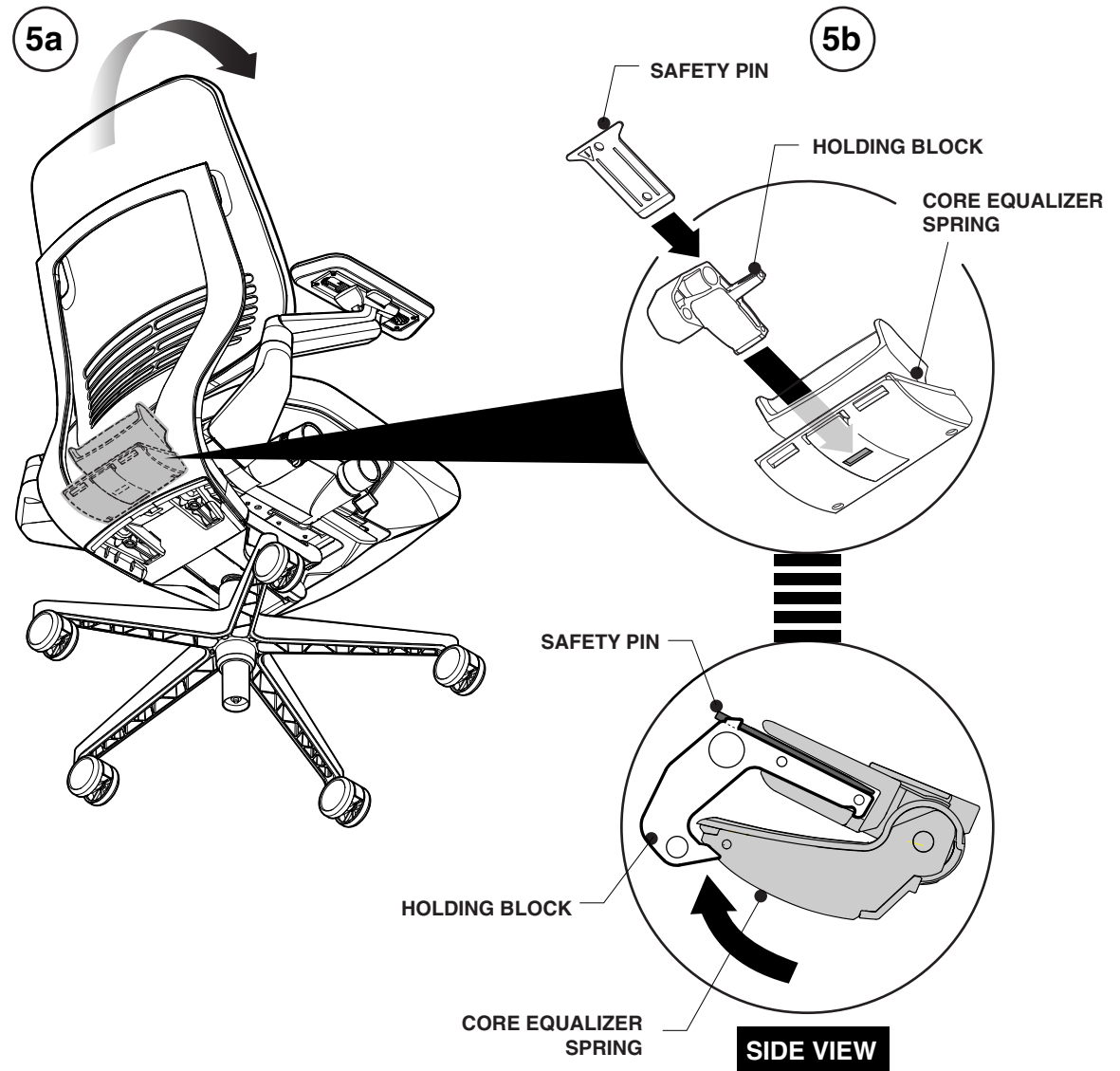
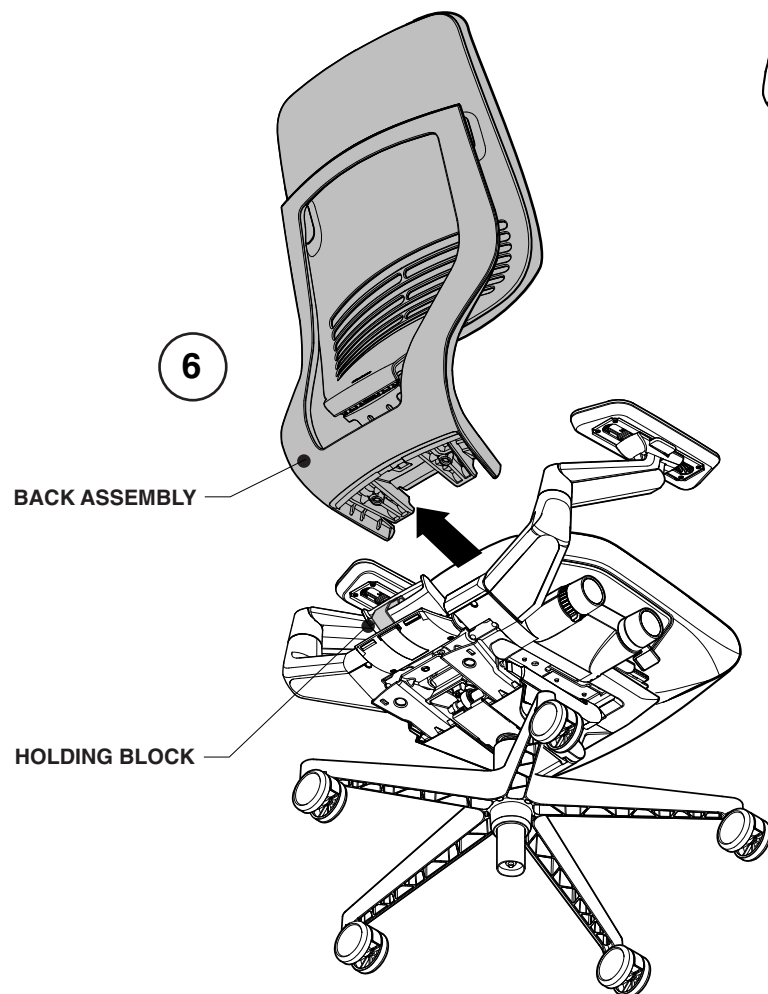
3. Position chair on its front and pry down bottom cover to remove.

4. Remove two (2) screws from back frame using a Torx-40 driver.



5. Rock the top of the back forward to compress the core equalizer spring fully (5a). Insert holding block (P/N 442B8101) and safety pin (P/N 442B9501) as shown (5b).

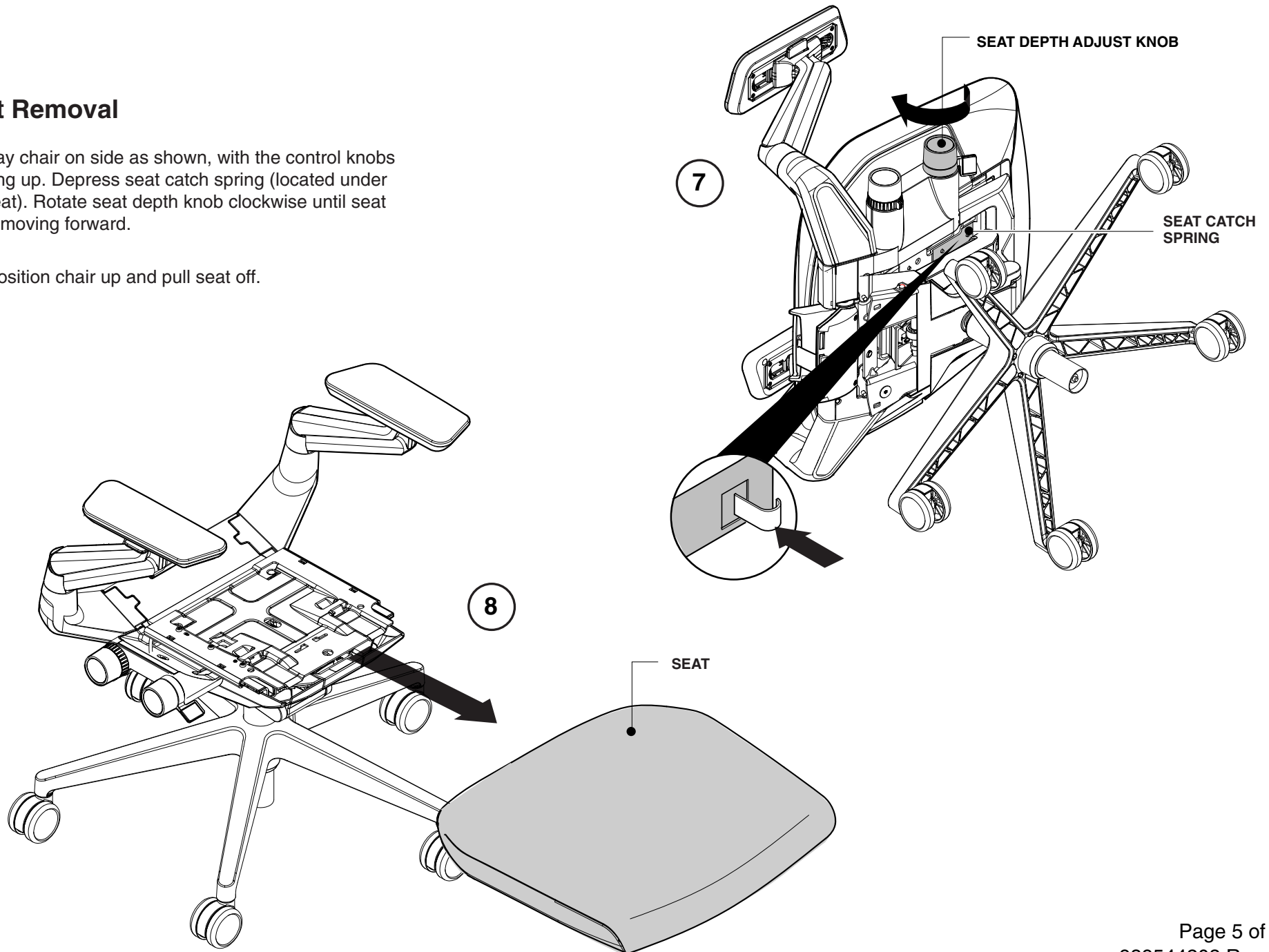
6. Remove back assembly by pulling straight out.



Seat Removal

7. Lay chair on side as shown, with the control knobs pointing up. Depress seat catch spring (located under the seat). Rotate seat depth knob clockwise until seat stops moving forward.

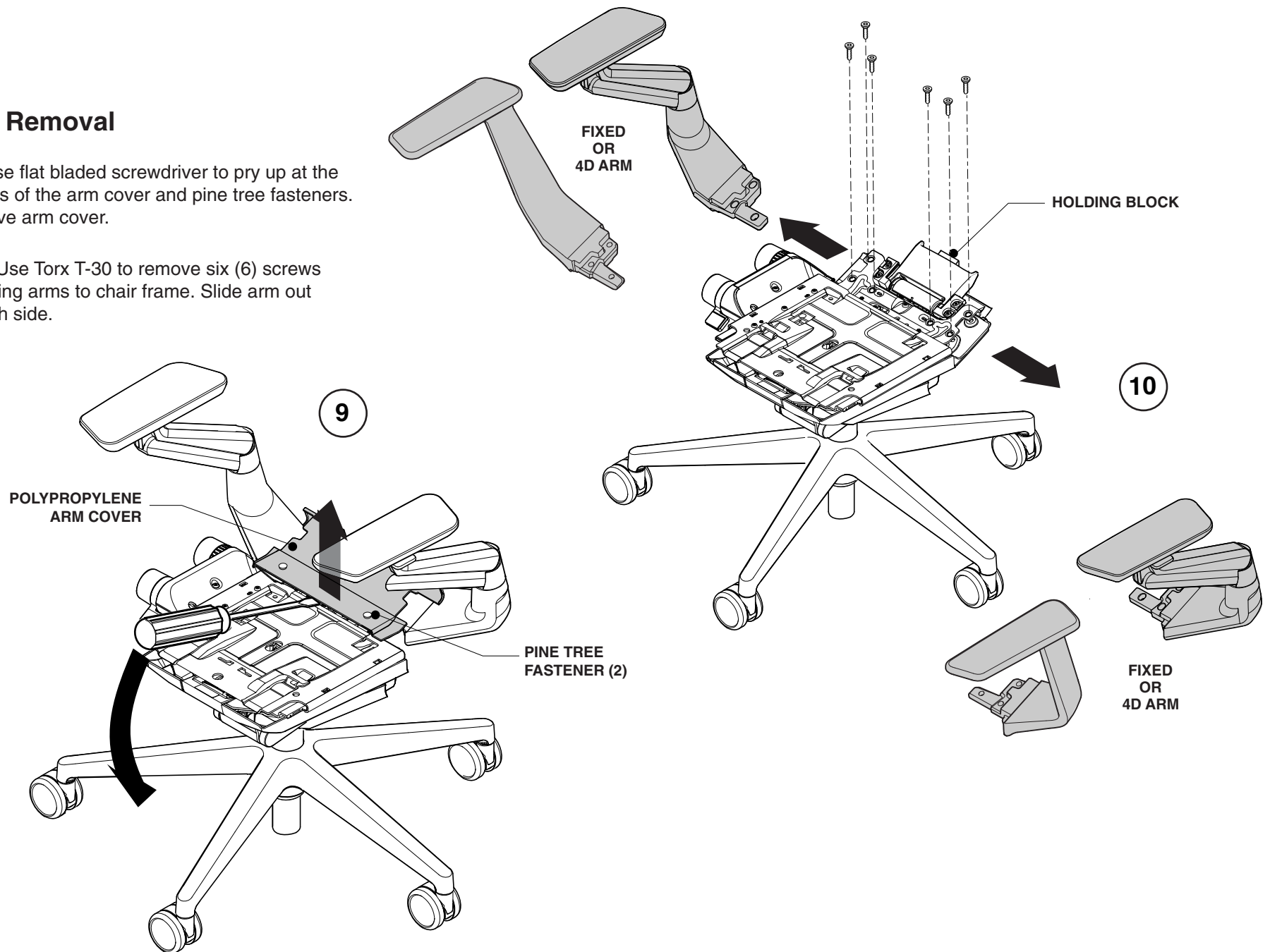
8. Position chair up and pull seat off.



Arm Removal

9. Use flat bladed screwdriver to pry up at the corners of the arm cover and pine tree fasteners. Remove arm cover.

10. Use Torx T-30 to remove six (6) screws attaching arms to chair frame. Slide arm out of each side.

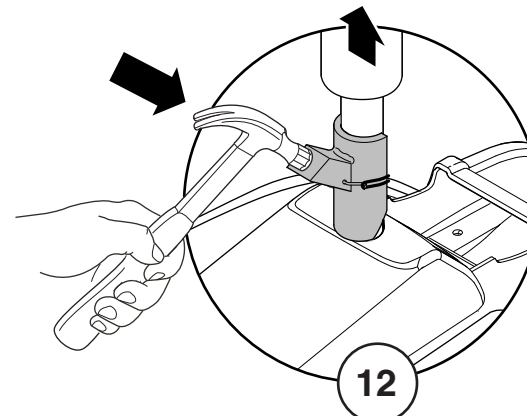
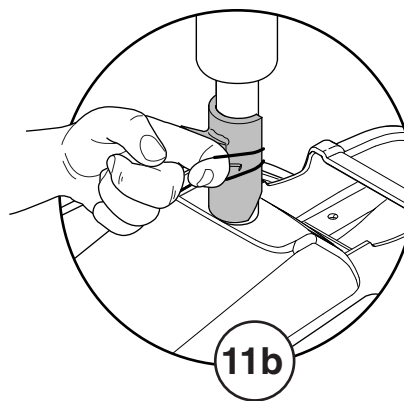
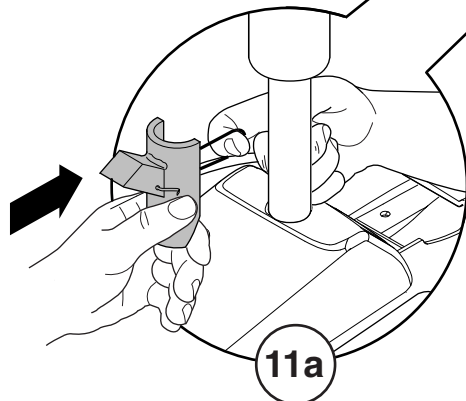
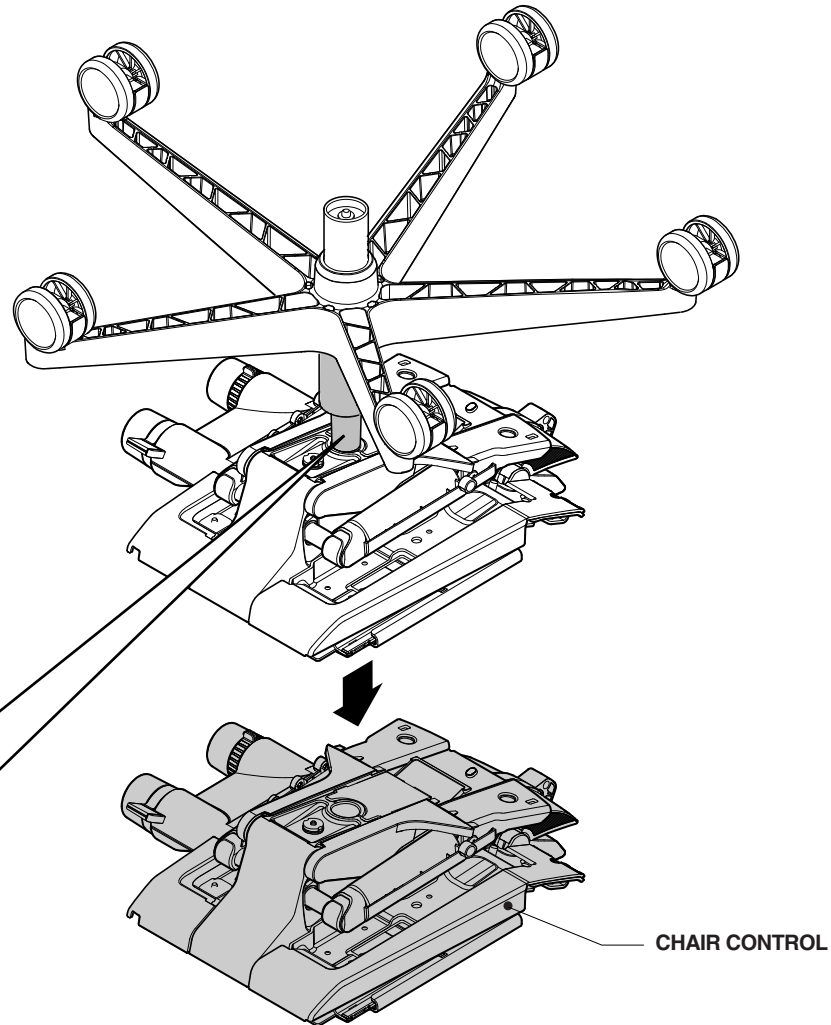


Remove Control from Cylinder and Base

11. Secure cylinder removal tool, (P/N 879100100), to cylinder to separate control from cylinder and base.

12. Apply lifting force to the cylinder and base with one hand. With hammer in the other hand, give the removal tool several solid hits on the flat area.

TIP: If cylinder does not separate from the control, apply WD-40 where it is embedded into the control. Wait approx. 20 minutes and repeat procedure.

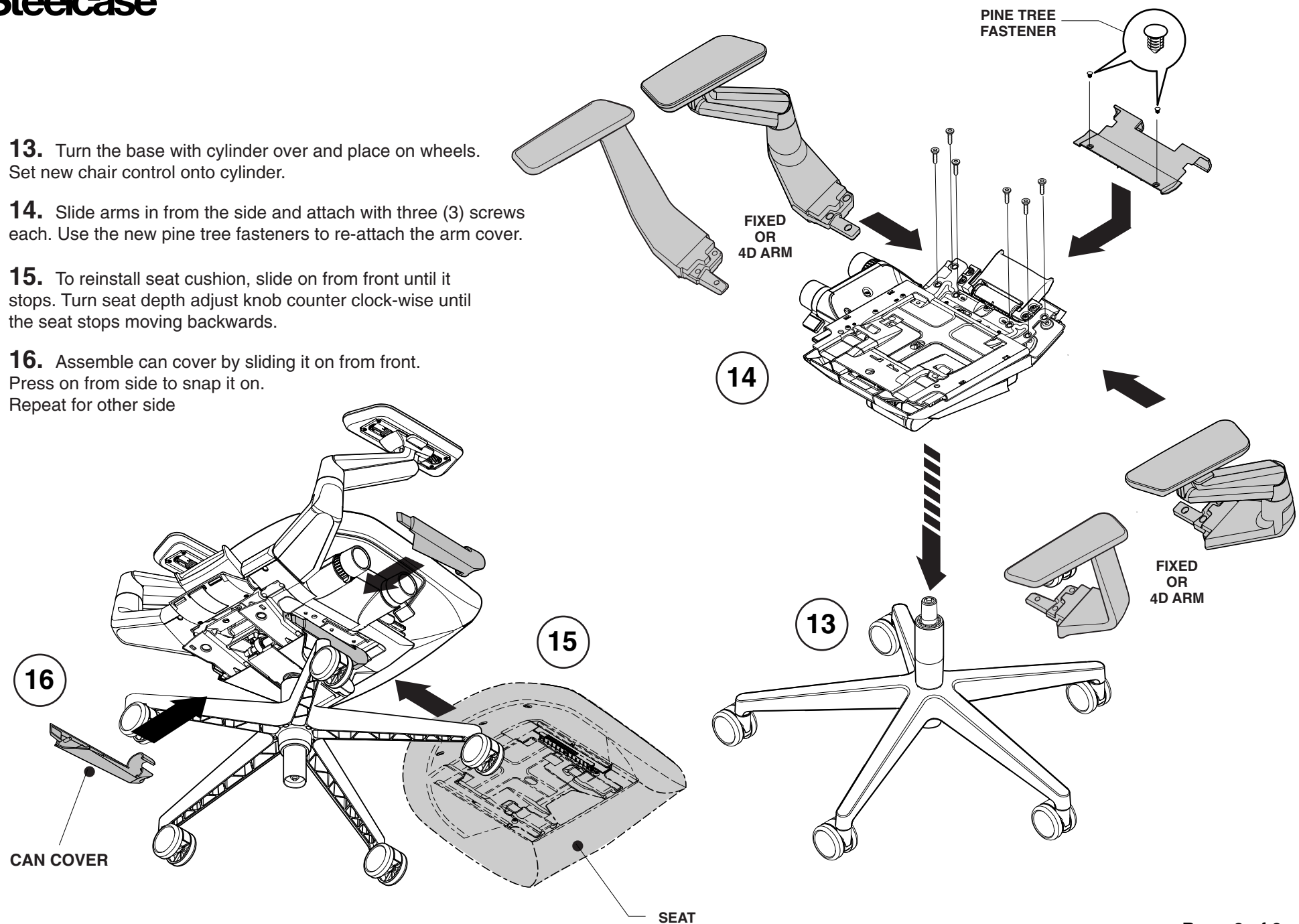


13. Turn the base with cylinder over and place on wheels. Set new chair control onto cylinder.

14. Slide arms in from the side and attach with three (3) screws each. Use the new pine tree fasteners to re-attach the arm cover.

15. To reinstall seat cushion, slide on from front until it stops. Turn seat depth adjust knob counter clock-wise until the seat stops moving backwards.

16. Assemble can cover by sliding it on from front. Press on from side to snap it on. Repeat for other side



17. Insert new back frame. Feed in from back. Rotate it down into place. Holes should align.

18. Rock back frame forward to compress core equalizer spring. Remove safety pin and holding block. Carefully rock top of back rearward to release tension on spring.

19. Make sure back frame holes align and drive two (2) large back frame screws with T-40 Torx until seated.

20. Replace bottom cover by aligning two (2) hooks in cover into steel holes in mechanism. Slide down to engage snaps.

21. Snap bottom of lower back into back buckle latch.

22. Set chair up on wheels. Sit in chair to set the cylinder taper to finish.

