

HARBOR N-DURA RESIN WICKER OUTDOOR ARM CHAIR

Patent number: 10462571

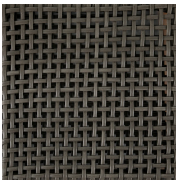
SKU: 1384



DESCRIPTION

Our Harbor Arm Chair combines comfort with modern elegance, featuring a durable open-weave, quick-dry design and lightweight aluminum construction. Powder-coated aluminum resists rust and corrosion, making it ideal for withstanding harsh weather conditions and extending the lifespan of your outdoor furniture. The slate grey finish and ergonomic armrests ensure both style and functionality for outdoor dining. Our exclusive N-Dura™ Ultra UV Resistant Resin Wicker sets our outdoor furniture apart with unmatched durability and UV protection in the industry. This item is designed to be enjoyed either with or without a cushion. Please designate your choice in the below "Select a Cushion" dropdown.

FINISH



Slate Gray

DIMENSIONS

Arm height floor to arm	25.5"
Product depth	26"
Product height	36"
Product weight	14.5
Product width	24"
Seat cushion depth	17.75"
Seat cushion height	1"
Seat cushion width	1"
Seat depth	17.75"
Seat height	18"
Seat height with cushion	19"
Seat width	19.5"

FEATURES

Brand	Summer Classics
Collection name	Harbor
Color family	Gray
Country of origin	IDN
Contract viable	Yes
Fade resistant	Yes
Finish family	Gray
Hardware finish	Stainless Steel
Inner frame material	Wrought Aluminum
Material	N-Dura Resin Wicker
Number of arms	2
Requires cushion	No
Seat back type	Fixed
Seating capacity	1
Stain resistant	Yes
Uv resistant	Yes

Water resistant
Material family

Yes
Wicker