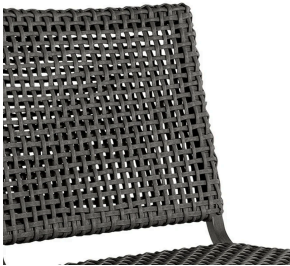


HARBOR N-DURA RESIN WICKER DINING SIDE CHAIR

Patent number: 10462571

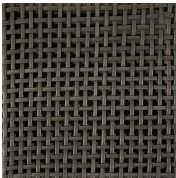
SKU: 1388



DESCRIPTION

Elevate your outdoor dining with our sleek Harbor Side Chair, featuring an open-weave design for quick drying and a lightweight aluminum frame for easy mobility. It's also treated for enhanced UV resistance, helping maintain its color and integrity even under constant exposure to the sun. Its elegant slate grey finish and tapered legs add a modern touch, perfect for any outdoor setting. Our exclusive N-Dura™ Ultra UV Resistant Resin Wicker sets our outdoor furniture apart with unmatched durability and UV protection in the industry. This item is designed to be enjoyed either with or without a cushion. Please designate your choice in the below "Select a Cushion" dropdown.

FINISH



Slate Gray

DIMENSIONS

Product depth	26"
Product height	36"
Product weight	12.25
Product width	23"
Seat cushion depth	17.75"
Seat cushion height	1"
Seat cushion width	1"
Seat depth	17.75"
Seat height	18"
Seat height with cushion	19"
Seat width	19.5"

FEATURES

Brand	Summer Classics
Collection name	Harbor
Color family	Gray
Country of origin	IDN
Contract viable	Yes
Fade resistant	Yes
Finish family	Gray
Hardware finish	Stainless Steel
Inner frame material	Wrought Aluminum
Material	N-Dura Resin Wicker
Requires cushion	No
Seat back type	Fixed
Seating capacity	1
Stackable	Yes
Stackable quantity	4
Stain resistant	Yes
Uv resistant	Yes

Water resistant
Material family

Yes
Wicker