

Installation Instructions for Bowman Outdoor Pendant

9200PBOWMAN

7000PBOW_ 1.0

VISUAL COMFORT & Co.

MODERN COLLECTION

GENERAL PRODUCT INFORMATION:

These fixtures are intended to be installed utilizing NEC compliant junction boxes.

This product is suitable for wet locations.

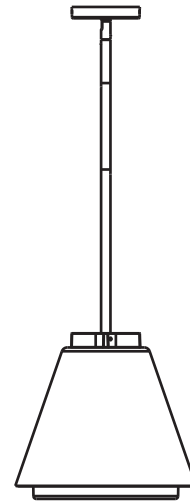
This instruction shows a typical installation.



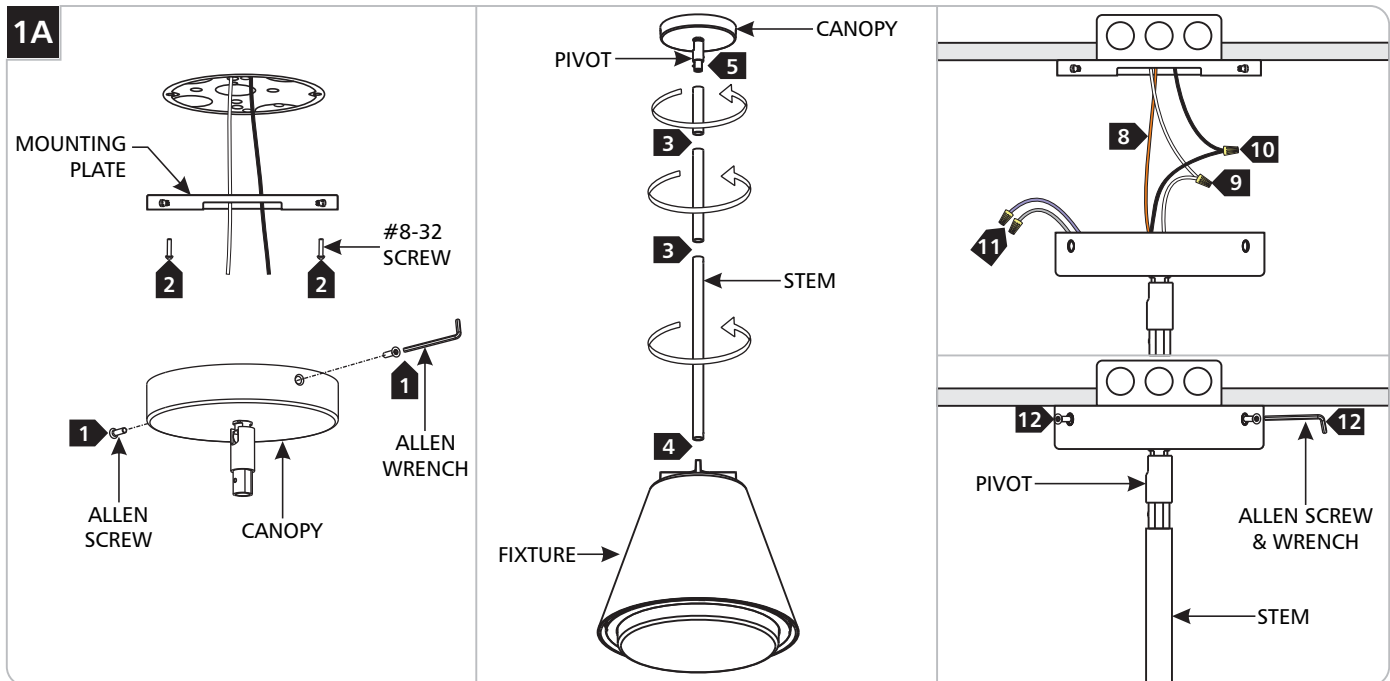
CAUTION - RISK OF FIRE

This product must be installed in accordance with the applicable installation code by a person familiar with the construction and operation of the product and the hazards involved.

Use minimum 90°C supply conductors.

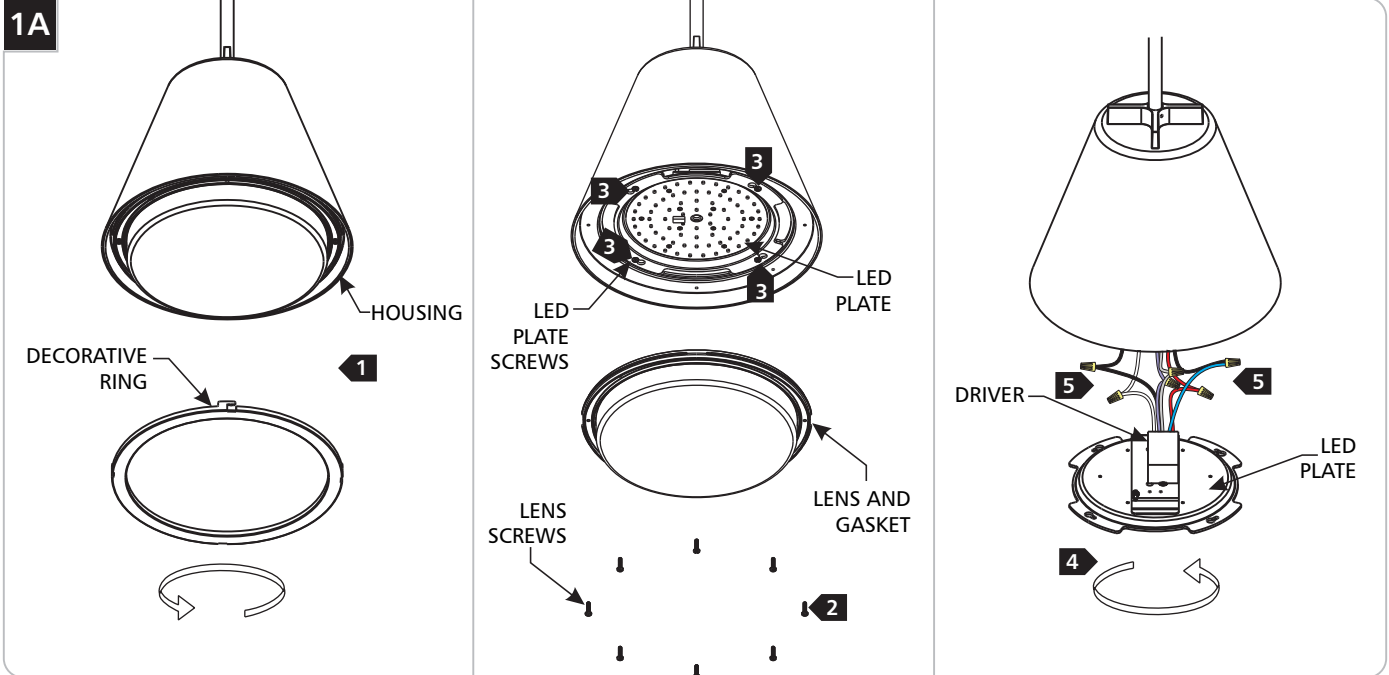


Install the Fixture



- 1 Remove the mounting plate from the canopy by unscrewing the Allen screws around the canopy using the provided Allen wrench.
- 2 Attach the mounting plate to the junction box using the two provided #8-32 screws.
- 3 Determine desired length of fixture using the provided stems and assemble them by screwing them together.
- 4 Feed the fixture wires through the stem assembly and screw it to the fixture.
- 5 Feed the fixture wires through the pivot and screw it onto the stem assembly.
- 6 Leave 6" of the cord behind the canopy for power connections. Cut the excess cord.
- 7 Strip the ends of the wires.
- 8 Connect the fixture to a suitable ground in accordance with local electrical codes.
- 9 Connect the white fixture wire to the neutral power line.
- 10 Connect the black fixture wire to the hot power line.
- 11 Use the gray and purple dimming wires for 0-10v dimming application (if not in use, make sure to cap these wires off). **Warning:** The purple and gray wires are only used for 0-10v dimming. For all other applications, do not connect the gray and purple wires.
- 12 Properly place all wires and wire nut connections into the canopy, install the canopy to the mounting plate, and reinstall the Allen screws (reversal of step 1).
- 13 For wet locations, fill cavity on the side of the pivot with silicone.

Replacing the Driver



- 1 Slightly rotate the decorative ring counter-clockwise and remove it from the housing.
- 2 Remove the screws from the lens, then remove the lens and gasket from the housing.
- 3 Loosen the four screws that hold the LED plate.
- 4 Rotate the plate to separate it from the housing.
- 5 Take note of the wire connections and disconnect the wires to replace the driver.
- 6 Once the new driver has been installed, reverse the previous steps to reassemble the fixture.

SAVE THESE INSTRUCTIONS!

VISUAL COMFORT & CO.
7400 Linder Ave, Skokie, IL 160077
800.969.3347

www.visualcomfort.com

©2023 Visual Comfort & Co.. All rights reserved. The Visual Comfort & Co. logo is a registered trademark of Visual Comfort & Co. Visual Comfort & Co. reserves the right to change specifications for product improvements without notification