

Balto Linear Suspension

700LSBLT_

1.1

VISUAL COMFORT & Co.

MODERN COLLECTION

GENERAL PRODUCT INFORMATION:

These fixtures are intended to be installed utilizing NEC compliant junction boxes.

This product is suitable for damp locations.

This product may be dimmed with a low-voltage electronic dimmer.

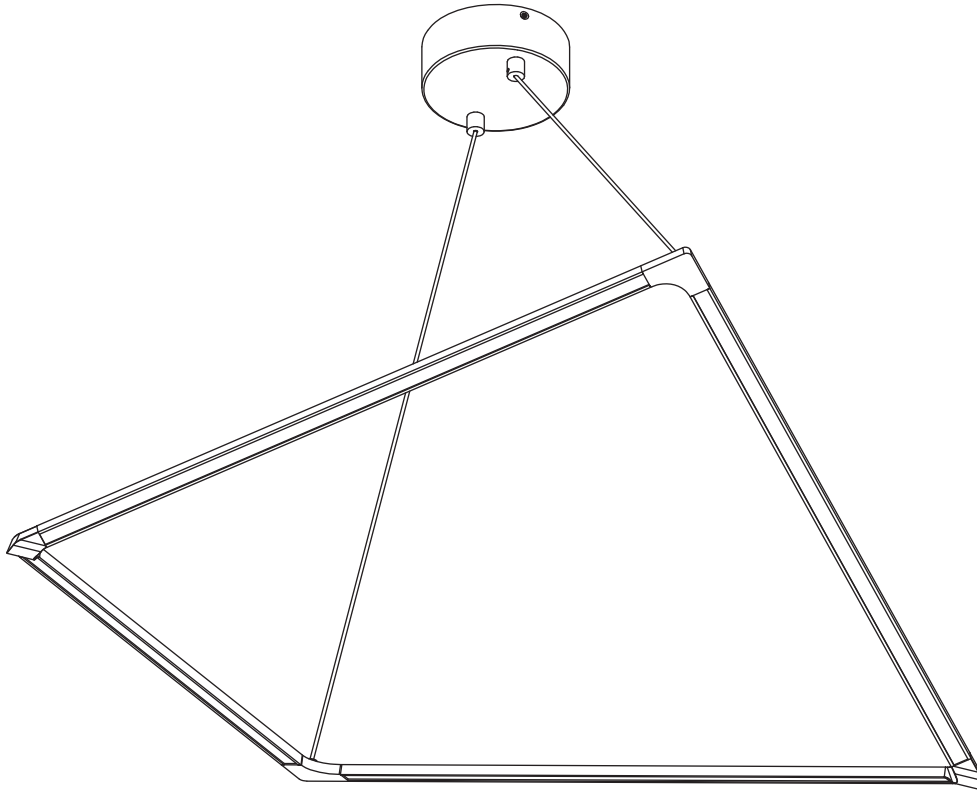


CAUTION - RISK OF FIRE

This product must be installed in accordance with the applicable installation code by a person familiar with the construction and operation of the product and the hazards involved.

Use minimum 90°C supply conductors.

SAVE THESE INSTRUCTIONS!



VISUAL COMFORT & Co.

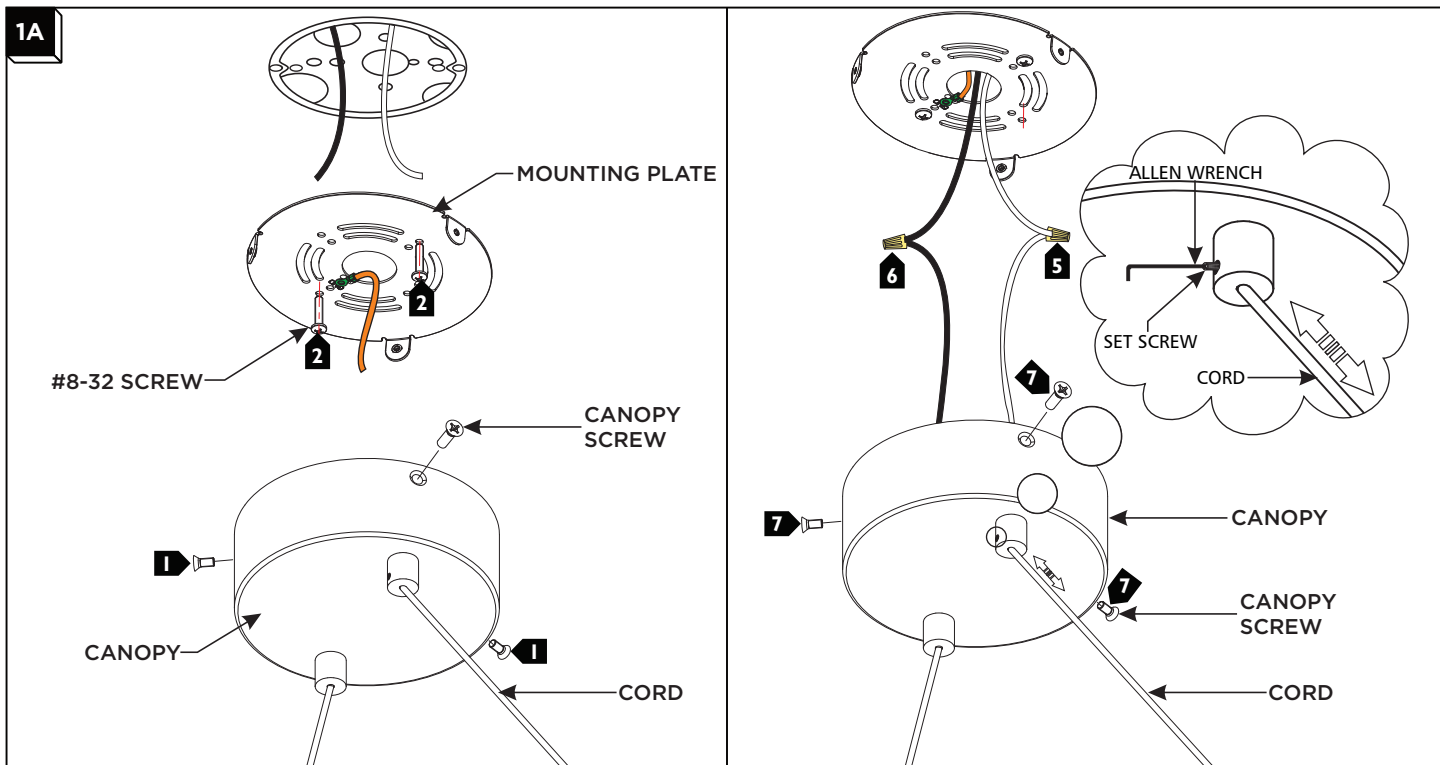
7400 Linder Ave., Skokie, IL 60077

T 847.410.4400 | F

847.410.4500

www.visualcomfort.com

Install the Fixture



- 1 Remove the canopy screws located on the sides of the canopy, then remove the mounting plate from the canopy.
- 2 Install the mounting plate onto the electrical box with the two #8-32 screws provided.
- 3 **Adjust the Height (Optional):** Determine the desired height of the fixture by loosening the set screws on the strain reliefs using the provided Allen Wrench and evenly feeding the cords into the canopy. Re-tighten the sets screws once the desired height is achieved.
- 5 Connect the fixture to suitable ground in accordance with local electrical codes.
- 6 Connect the white fixture wire to the neutral power line wire with a wire nut.
- 7 Connect the black fixture wire to the hot power line wire with a wire nut.
- 8 **For 277V Only:** If using 0-10V dimming, connect the purple and gray wires to a compatible dimmer. If not using 0-10V dimming, cap off the purple and gray wires.
- 9 Properly place all wires and wire nut connections into the canopy, mount the fixture back onto the mounting plate, and reinstall fixture screws (reversal of step 1).

NOTE: If minor adjustments to the fixture's leveling is necessary, it is recommended that one person hold the fixture straight with the use of a level while the other adjusts the cords following the steps below.

- 10 **Fine Leveling (Optional):** Loosen (**do not remove**) the set screws on the necessary strain relief and gently pull or push the cord in very small increments through the strain relief to adjust the height of the fixture. Re-tighten the set screw on the strain relief using the provided Allen Wrench.