

Kulma Small and Large Outdoor Wall

700OWKLM_ 1.2

VISUAL COMFORT & Co.

MODERN COLLECTION

GENERAL PRODUCT INFORMATION:

These fixtures are intended to be installed utilizing NEC compliant junction boxes.



Use approximate 2x4 single gang junction box mounted horizontally only or provided universal mounting/goof plate to completely cover the junction box.

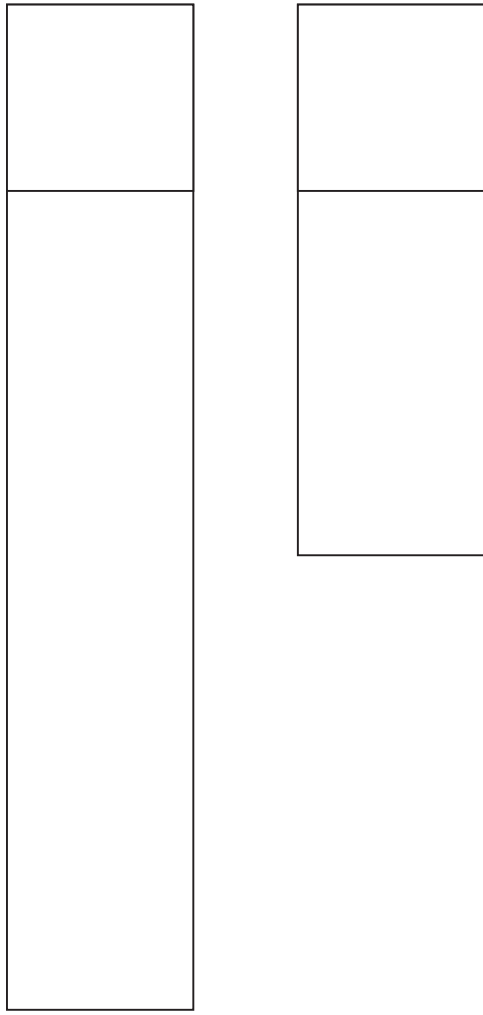
This product is suitable for wet locations.

Dimmable with most LED compatible ELV, TRIAC and 0-10V dimmers.

This instruction shows a typical installation.

CAUTION - RISK OF FIRE
This product must be installed in accordance with the applicable installation code by a person familiar with the construction and operation of the product and the hazards involved.
Use minimum 90°C supply conductors.

SAVE THESE INSTRUCTIONS!



VISUAL COMFORT & Co.

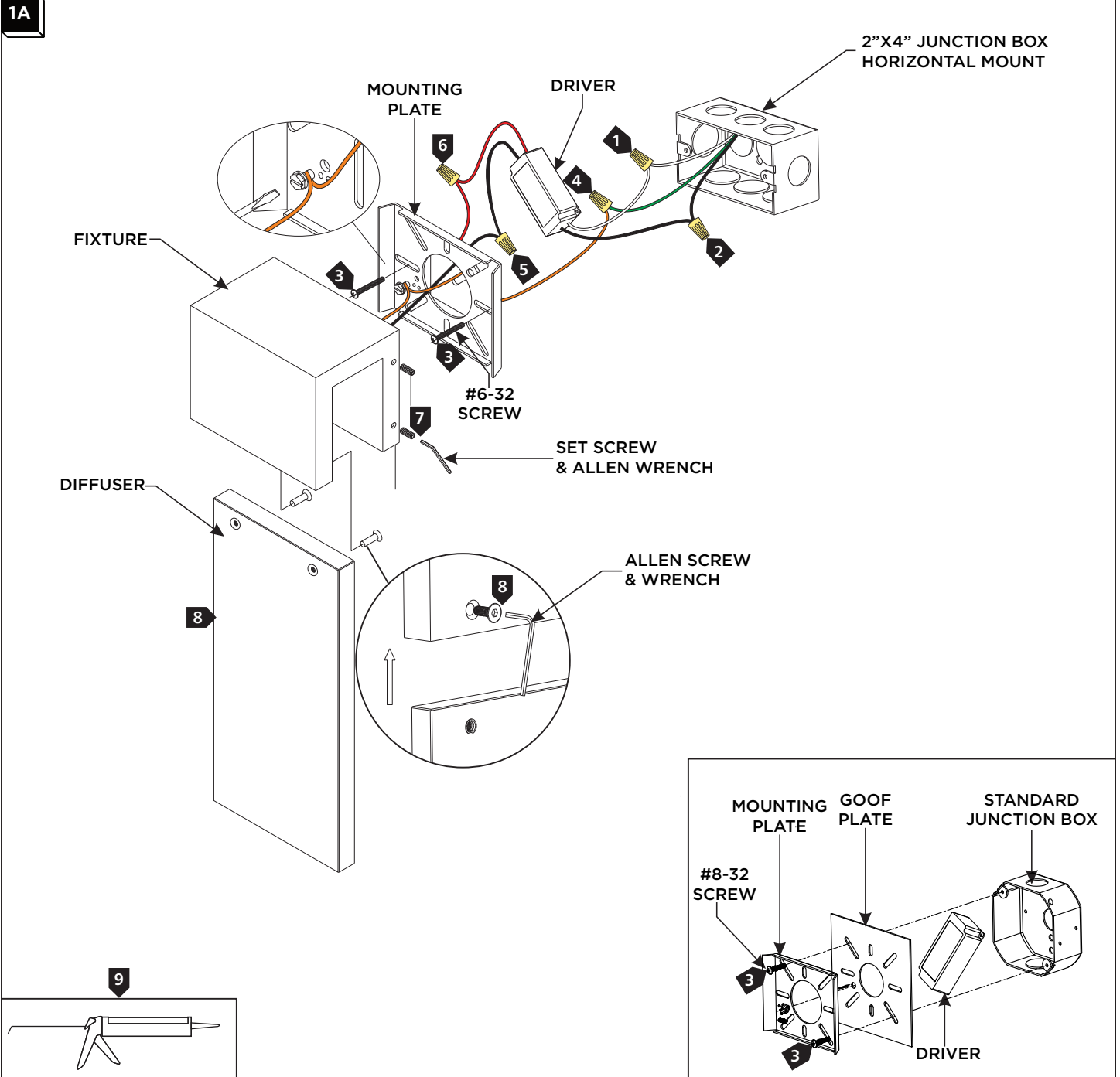
7400 Linder Ave., Skokie, IL 60077

T 847.410.4400 | F

847.410.4500

www.visualcomfort.com

Install the Fixture



- 1 Connect the white input driver wire to the neutral power line with a wire nut.
- 2 Connect the black input driver wire to the hot power line with a wire nut.
- 3 Properly place the driver and wire nut connections into the junction box. **If using a standard junction box**, secure both the goof plate and mounting plate with the two #8-32 screws provided. **If using a 2"X4" junction box**, make sure the 2"X4" junction box is mounted horizontally, then install the mounting plate to it with the two #6-32 screws provided. Leave the negative (-) and positive (+) driver output wires available.
- 4 Connect the fixture to a suitable ground in accordance with local electrical codes.
- 5 Connect the black negative (-) fixture wire to the black negative (-) driver output wire with a wire nut.
- 6 Connect the red positive (+) fixture wire to the red positive (+) driver output wire with a wire nut.
- 7 Tuck the wires into the junction box/fixture base, mount the fixture base onto the mounting plate, and secure it in place using the set screws with the provided Allen wrench.
- 8 Install the diffuser to the fixture and secure it in place with the Allen screws using the provided Allen wrench.
- 9 **For Wet Locations**, caulk around the fixture base and set screws on the fixture base with waterproof construction sealant.