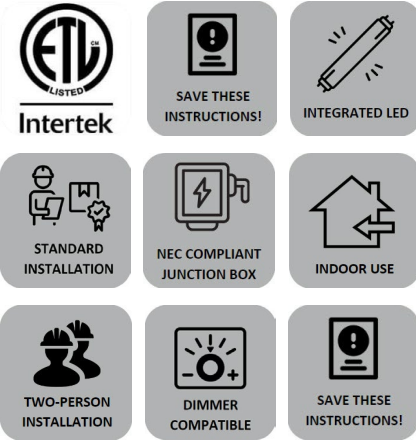


SHUFFLE LARGE CHANDELIER

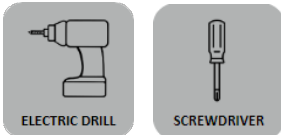
CDCH17327WOB; CDCH17327WONB

General Product Information



Dimming with most LED compatible ELV dimmers.

Tools Required

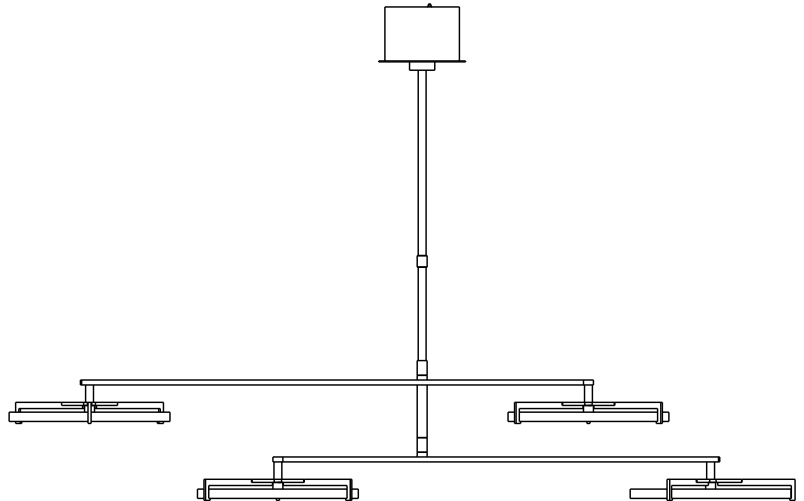
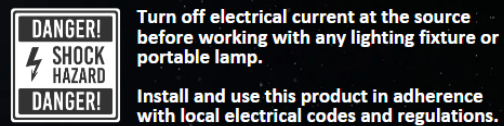


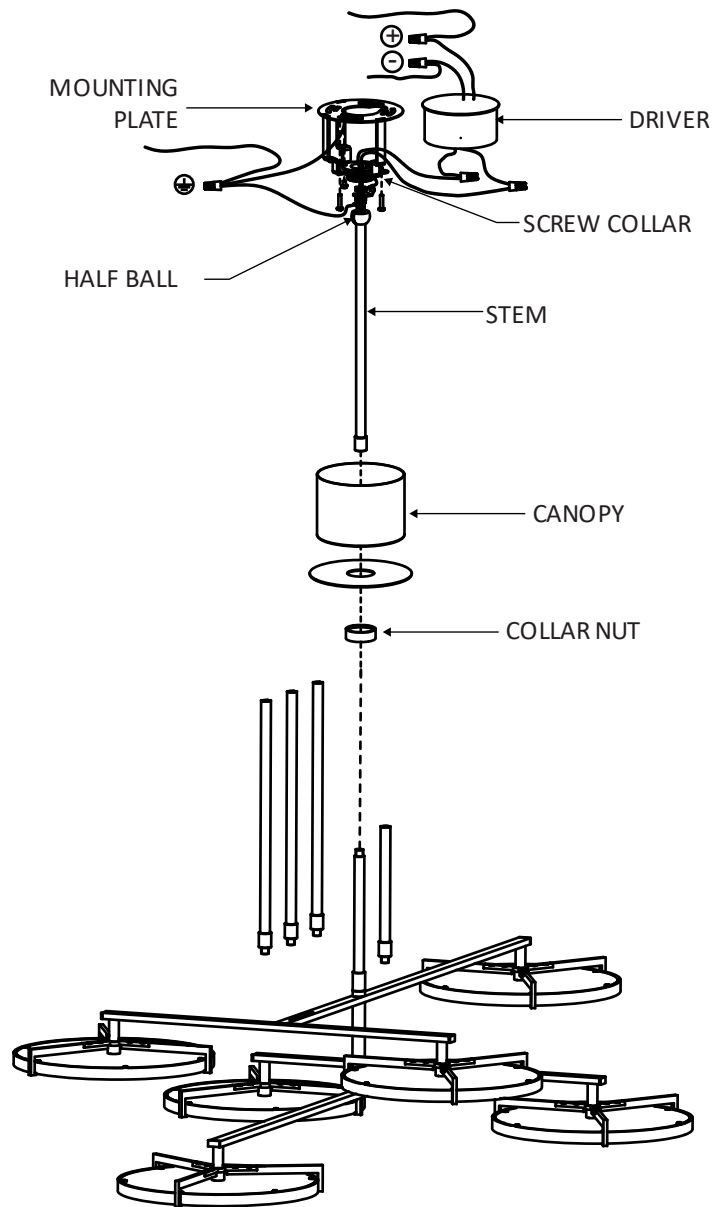
Safety Information

CAUTION-RISK OF FIRE

This product must be installed in accordance with the applicable installation code by a person familiar with the construction and operation of the product and the hazards involved.

USE MINIMUM 90°C SUPPLY CONDUCTORS.





INSTRUCTIONS

I. Preparing the Fixture

1. Unscrew the collar nut from the screw collar on the mounting plate.
2. Remove the mounting plate and driver from the canopy.
3. Install the mounting plate to the electrical box with the #8-32 screws provided.
4. Determine the desired height of the fixture using the provided stems and assemble them by screwing them together.
5. Feed the fixture wires through the collar nut, canopy, and stem assembly.
6. Screw the stem assembly onto the fixture stem.
7. Slide the half ball into the screw collar on the mounting plate, ensuring that it properly drops to the bottom of the collar.
8. Place the driver in the mounting plate brackets.

II. Wiring the Fixture

1. Separate two sides of molded wire and strip the insulation on each to 5/8".
2. Connect the following wires using a wire nut:
 - a) Fixture wire (black) to driver output (blue)
 - b) Fixture wire (red) to driver output (red)
 - c) Supply side line to driver input line (black)
 - d) Supply side neutral (white) to driver input neutral (white)
3. Connect the following grounding wires using a wire nut:
 - a) Ground at the top of the half ball to the ground at the top of the mounting plate
 - b) The above two wires to the supply side ground
4. Neatly place all wires and wire nut connections inside the canopy.

III. Installing the Fixture

1. Place the canopy onto the mounting plate, and secure in place by screwing the collar nut onto the screw collar.
2. Turn on the power.