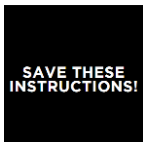
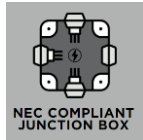
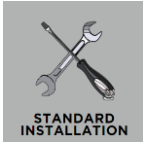


LOWING MEDIUM CHANDELIER

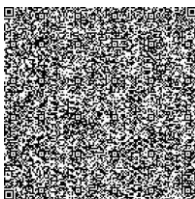
SLCH355

MODERN COLLECTION

General Product Information



WARRANTY



FCC STATEMENT

Tools Required



PHILLIPS-HEAD
SCREWDRIVER



WIRE CUTTER

Safety Information

CAUTION-RISK OF FIRE

This product must be installed in accordance with the applicable installation code by a person familiar with the construction and operation of the product and the hazards involved.

USE MINIMUM 90°C SUPPLY CONDUCTORS.



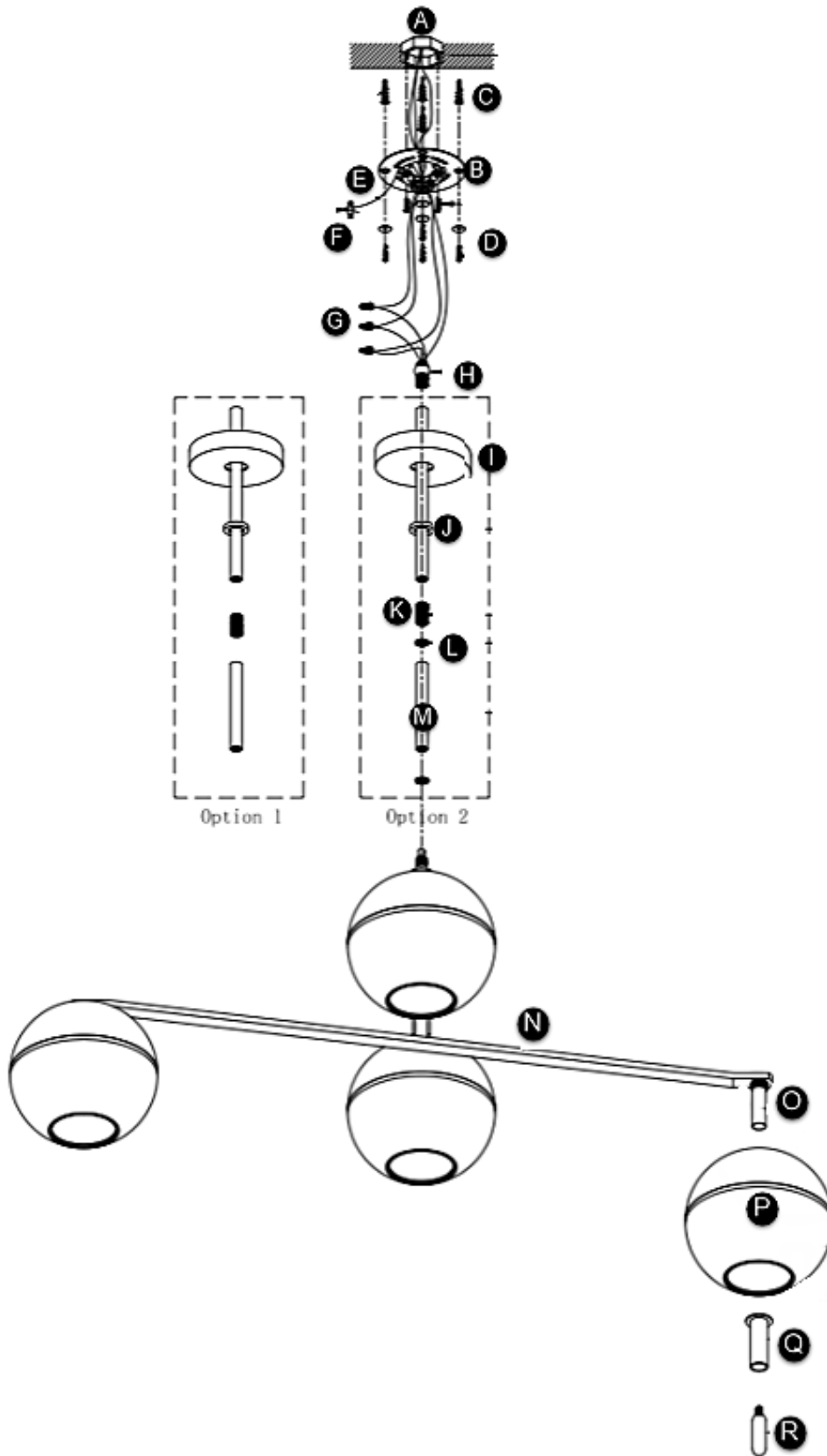
Turn off electrical current at the source before working with any lighting fixture or portable lamp.

Install and use this product in adherence with local electrical codes and regulations.



FIXTURE PARTS

- A. Junction box
- B. Mounting plate
- C. Anchors
- D. Anchor screws and washers
- E. Safety cable
- F. Cable grip
- G. Wires and wire nuts
- H. Half ball
- I. Canopy
- J. Collar nut
- K. $\frac{1}{4}$ IPS
- L. Collar
- M. Stem
- N. Fixture
- O. Socket
- P. Shade
- Q. Metal Cup
- R. Bulb (Not Included)



INSTRUCTIONS

I. Preparing the Fixture

1. Remove the mounting plate from the canopy.
2. Use the mounting plate to mark the position for the anchors and set aside.
3. Line up an anchor tip at the marked location and push the anchor into the ceiling up to the threads. Screw the anchor in the rest of the way with a Phillips-head screwdriver. Repeat this step for the remaining anchors.
4. Reinstall the mounting plate to the junction box with the two #8-32 screws provided.
5. Slide an anchor screw through a washer and screw it into an anchor to secure the mounting plate to the ceiling. Repeat this step for the remaining anchor screws.
6. Slide the canopy, then the collar nut onto the half ball/stem assembly.
7. Adjust the Fixture Height: Determine the desired height of the fixture using the provided stems, collars (optional components for consumers), rod and half ball/upper stem. Feed the fixture wires through each section of the stem assembly, screwing the sections together as each piece is added. Once the desired height is reached screw the entire stem assembly to the top of the fixture.
8. Seat the half ball into the mounting plate ensuring no wires are being pinched.
9. Remove the cable grips at A, pull the cable up and down through the mounting plate as shown, feed the cables through the cable grips, and secure them to the mounting plate as shown. Tighten the screws to secure the cables.

II. Wiring the Fixture

1. Safety first! Locate the circuit breaker and switch it off to cut off the power supply to the relevant circuits to ensure there's no electricity running through the wiring.
2. In accordance with local electrical codes, connect the fixture ground wire (bare copper or silver wire) to suitable ground. This may be a green ground screw on the mounting plate, which the ground wire should be tightly wrapped around or a house wire (green or bare copper wire without insulation).
3. Twist the bare ends of the following pairs of wires together using a wire nut to secure a connection:
 - a) Black fixture wire (round and/or smooth) to the hot power line wire
 - b) White fixture wire (square and/or rigid) to the neutral power line wire
4. Carefully tuck all wires into the junction box. Place the canopy onto the ceiling and secure it in place by screwing the collar nut tightly onto the collar.

III. Installing the Fixture

1. For items SLCH354 and SLCH355 only, use provided Allen wrench to loosen the Allen screw (do NOT remove), then adjust the arms of fixture to desired angle and secure the fixture by tightening the Allen screw.
2. Attach the shades onto the sockets.
3. Screw the bulbs into the sockets. Please refer to the label on the socket for max wattage information.