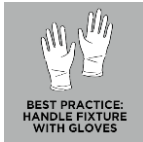
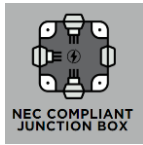
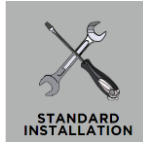


## AGRA 12, 18, 24 & 36 PICTURE LIGHTS

SLPC626 SLPC627 SLPC628 SLPC629

### General Product Information



Built for use with single gang electrical or handy boxes only.



### Suggested/Required Tools



### Safety Information

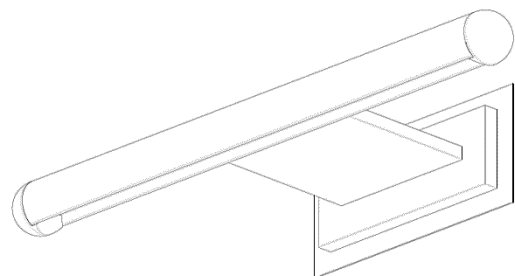
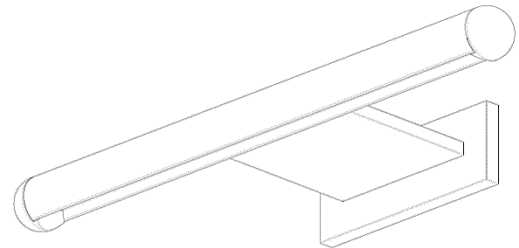
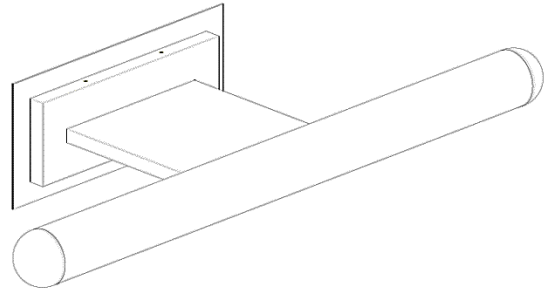
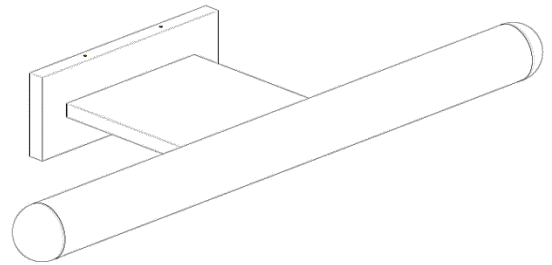
#### CAUTION-RISK OF FIRE

This product must be installed in accordance with the applicable installation code by a person familiar with the construction and operation of the product and the hazards involved.

USE MINIMUM 90°C SUPPLY CONDUCTORS.

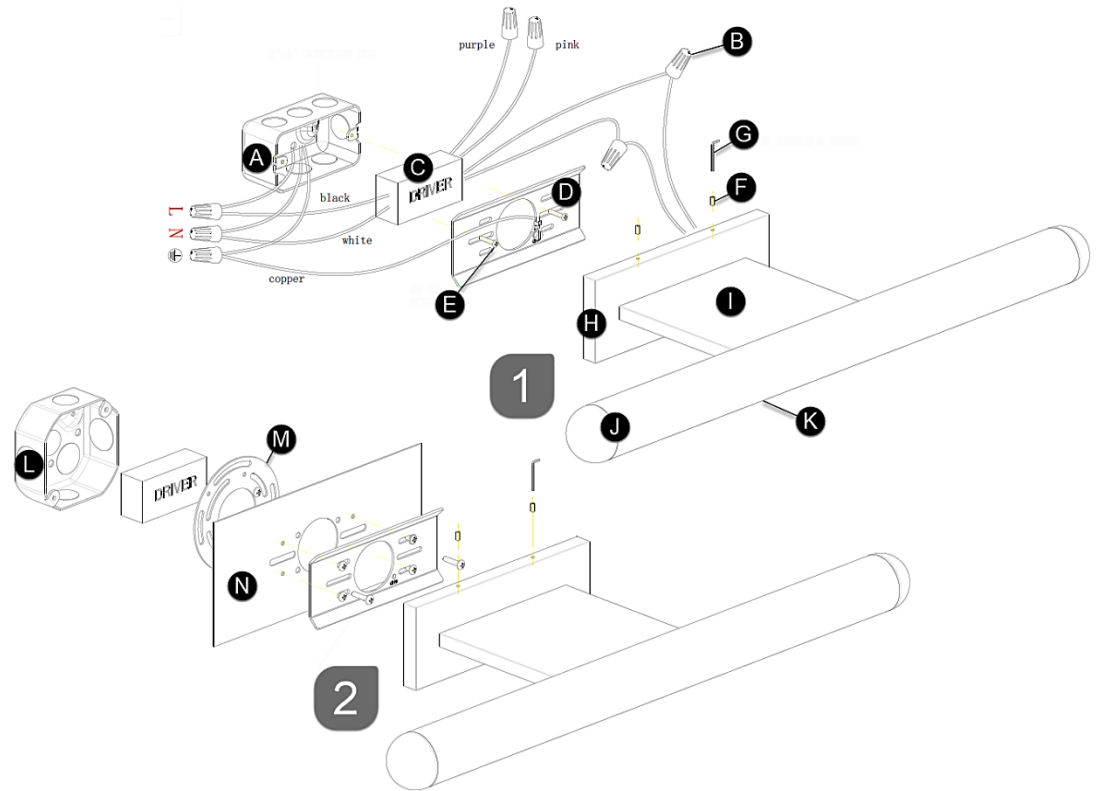


Turn off electrical current at the source before working with any lighting fixture or portable lamp.  
Install and use this product in adherence with local electrical codes and regulations.



## FIXTURE PARTS

- A. Junction Box 2"x4"  
(Not Included)
- B. Wire Nut Connections
- C. Driver
- D. Rectangular Mounting  
Plate
- E. Mounting Screws
- F. Fixture Screws
- G. Allen Wrench
- H. Fixture  
Base/Backplate
- I. Fixture
- J. Shade
- K. LED Light & Recessed  
Silicone Diffusor
- L. Junction Box 3.5"x3.5"  
(Not Included)
- M. Round Mounting Plate
- N. Goof Plate (Optional)



## INSTRUCTIONS

### I. Preparing the Fixture

1. Carefully, unbox and examine all the items included in the packaging of the fixture.
2. Separate the mounting plate from the fixture's backplate by removing the fixture screws.
3. Decide upon the installation option. This fixture may be installed with a 2"x4" (rectangular mounting plate) or 3.5"x3.5" junction box (round mounting plate) and with or without the goof plate option. A goof plate can be used for aesthetic purposes to hide damage, discoloration, or gaps on the mounting surface from previous installations.

### II. Wiring the Fixture

1. Safety first! Locate the circuit breaker and switch it off to cut off the power supply to the relevant circuits to ensure there's no electricity running through the wiring.
2. Connect the LED driver input wires to the local power line wires. Twist the bare ends of the following pairs of wires together using a wire nut to secure a connection:
  - a) Neutral driver wire (white) to neutral power line wire
  - b) Hot driver wire (black) to hot power line wire
3. For 0-10V dimming capabilities, connect the purple and pink wires to a compatible dimmer. Cap off these wires, if not in use.
4. Place the driver in the junction box, ensuring the output driver wires are accessible.
5. Secure the correct type of mounting plate for your junction box using the provided mounting screws. **Optional:** *Install the goof plate behind the mounting plate, using the mounting screws to secure them both to the junction box.*
6. In accordance with local electrical codes, connect the fixture ground wire (bare copper or silver wire) to suitable ground. This may be a green ground screw on the mounting plate, which the ground wire should be tightly wrapped around or a house wire (green or bare copper wire without insulation).
7. Now, twist the bare ends of the following pairs of wires together using a wire nut to secure a connection:
  - a) Negative (-/blue) fixture wire to negative (-) output driver wire
  - b) Positive (+/red) fixture wire to positive (+) output driver wire
8. Carefully tuck all the wires into the junction box.

### III. Installing the Fixture

1. Place the fixture backplate/base onto the mounting plate and secure it in place with the fixture screws.