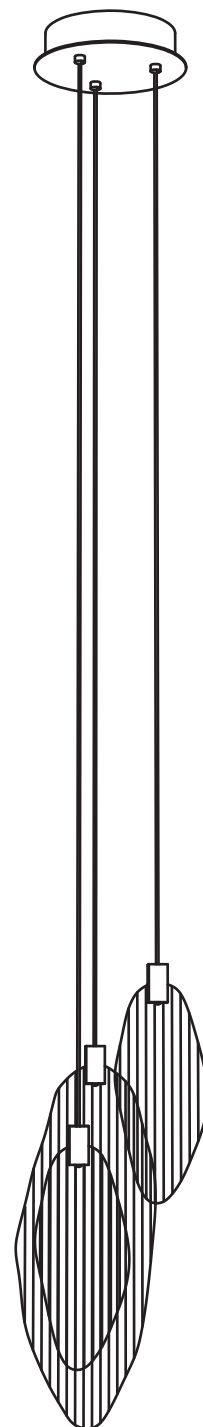


TERZANI
LA LUCE PENSATA

Harpe 3 light pendant

0W034S-AT





HARPE

CODE 0W034S -- -- AT
3000K

220-240V ~ 50/60Hz MAX 6.3W

700mA 3xMAX 2.1W

integrated LED



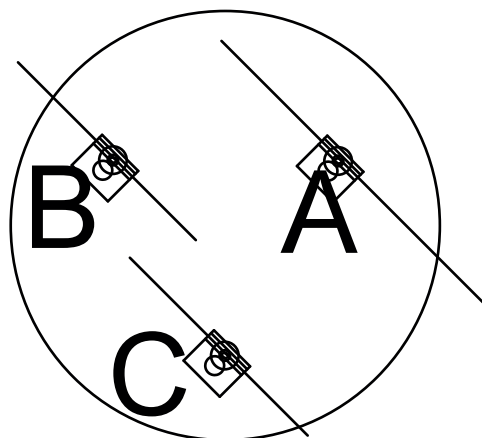
4.2Kgf
9.3Lbs

x2



FOLLOW THE LETTERS TO PLACE THE PENDANTS IN THE CORRECT POSITION

BOTTOM VIEW:



FRONT VIEW





HARPE

CODE 0W034S -- -- AT
3000K

220-240V ~ 50/60Hz MAX 6.3W

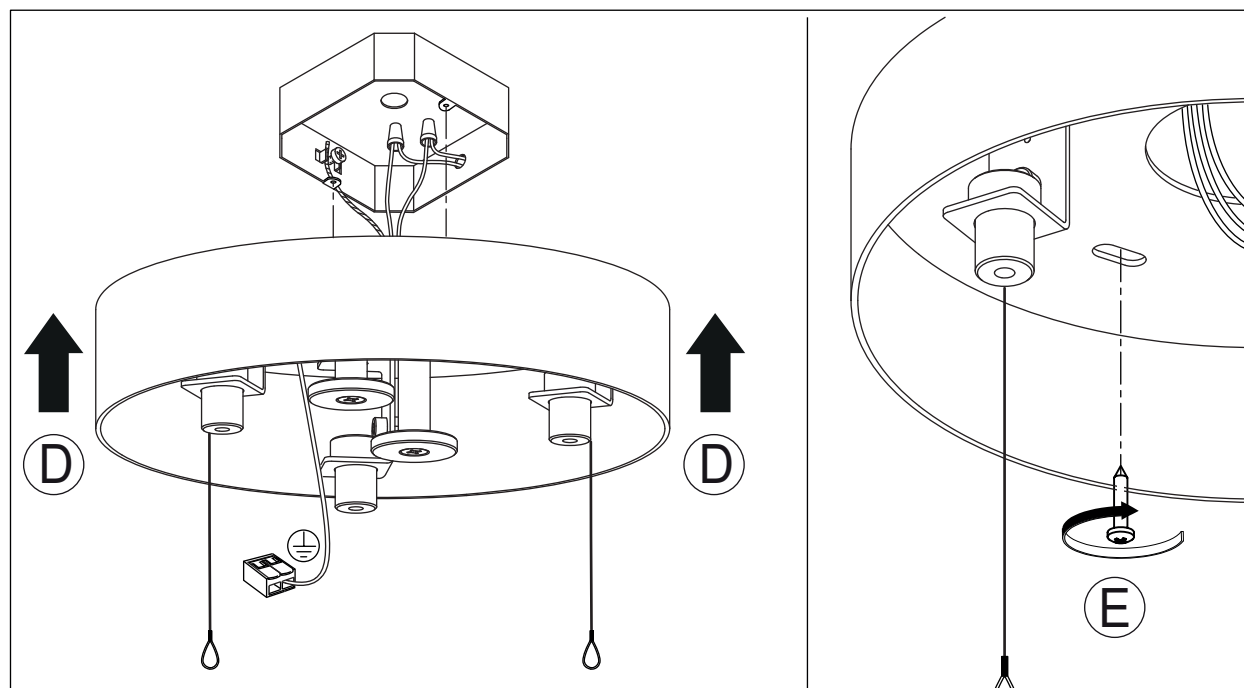
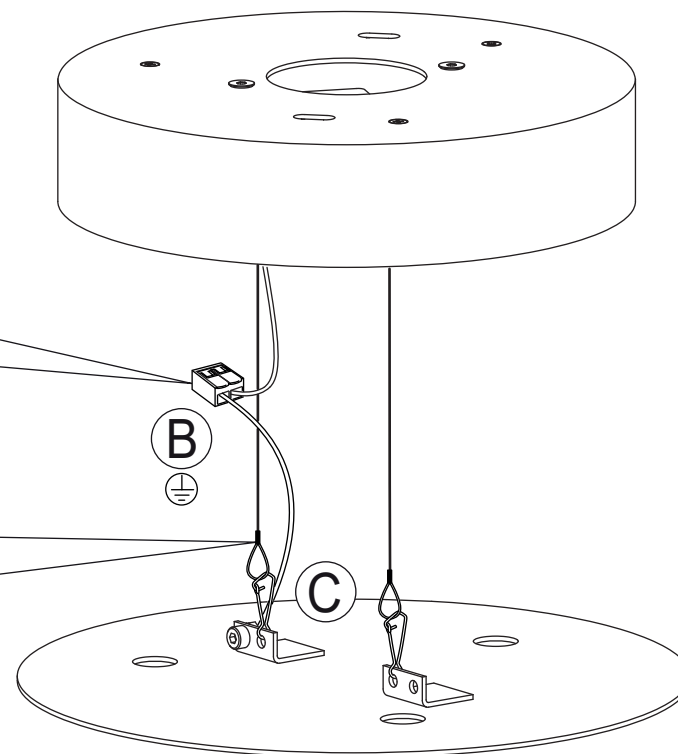
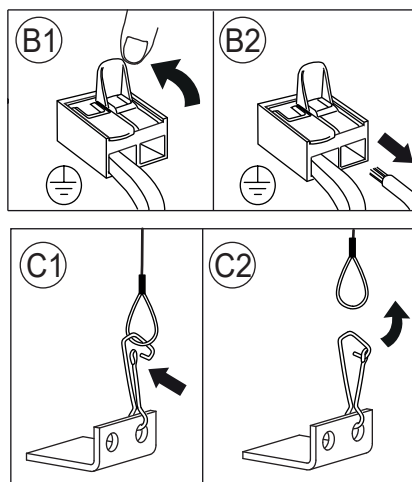
700mA 3xMAX 2.1W

integrated LED



 **4.2Kgf**
9.3Lbs

 **x2**





HARPE

CODE 0W034S -- -- AT
3000K

220-240V ~ 50/60Hz MAX 6.3W

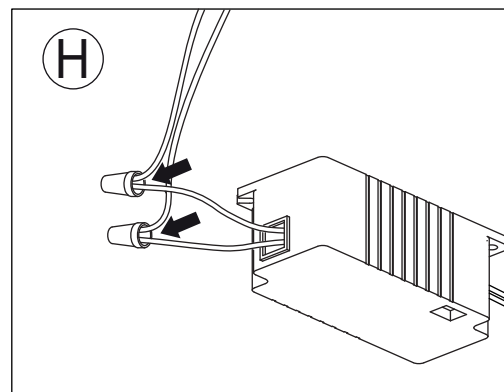
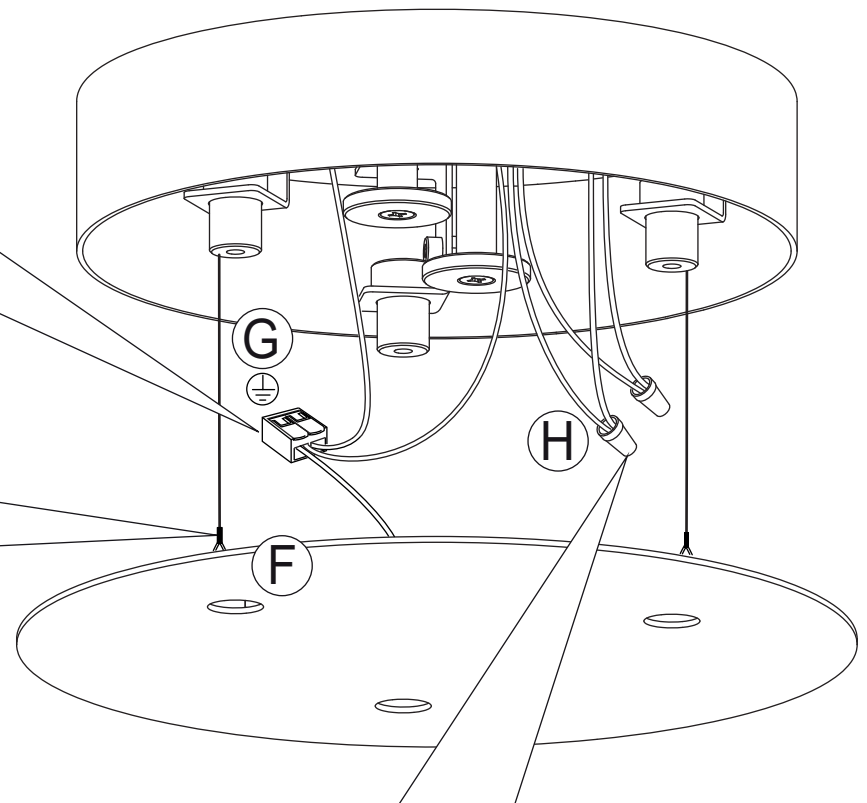
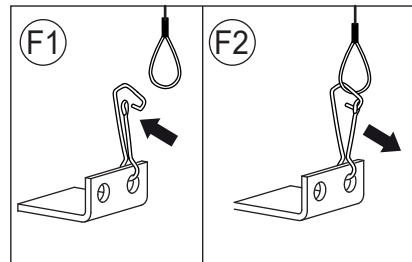
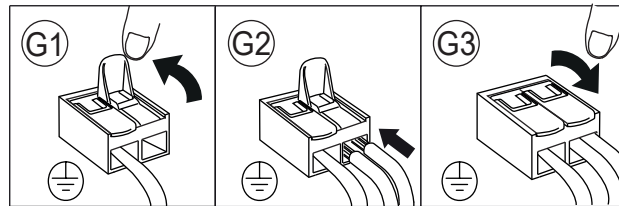
700mA 3xMAX 2.1W

integrated LED

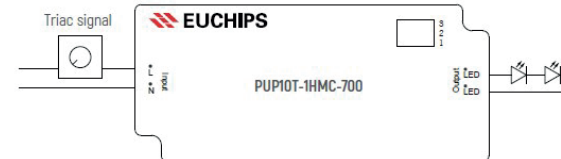


 **4.2Kgf**
9.3Lbs

 **x2**



Wiring Diagram





HARPE

CODE 0W034S -- -- AT
3000K

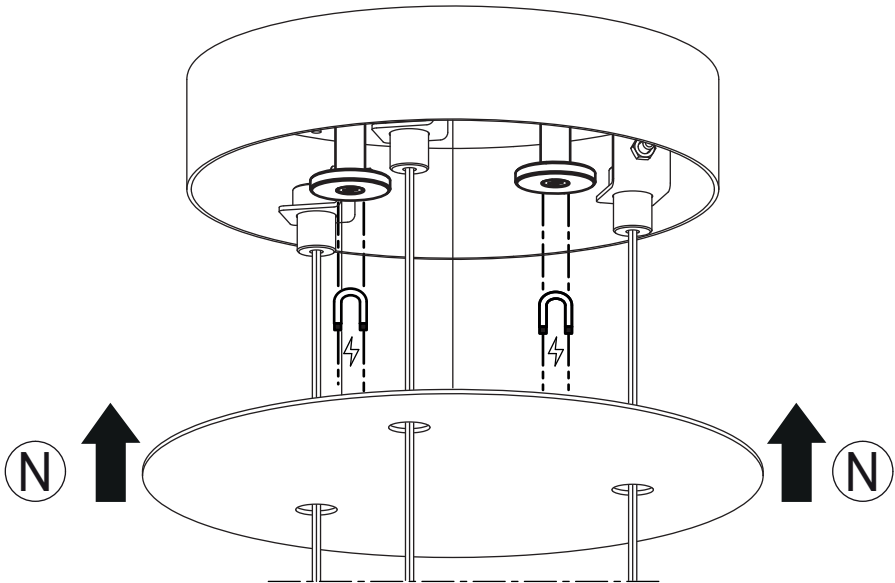
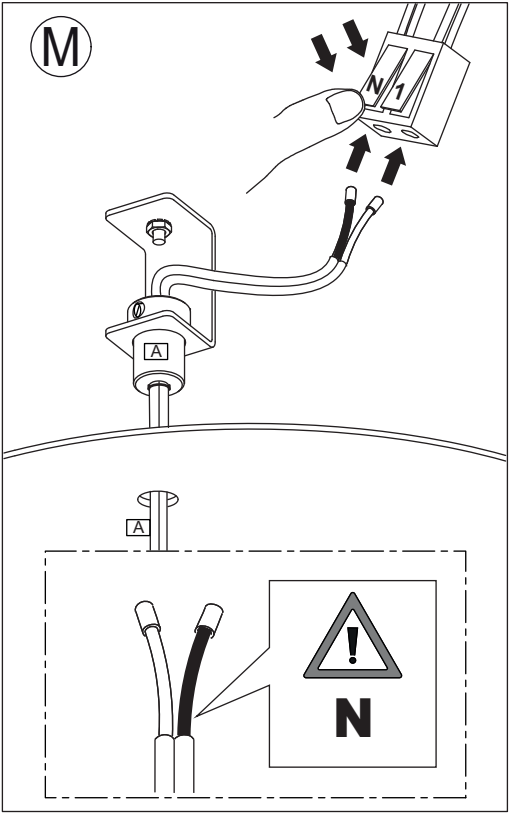
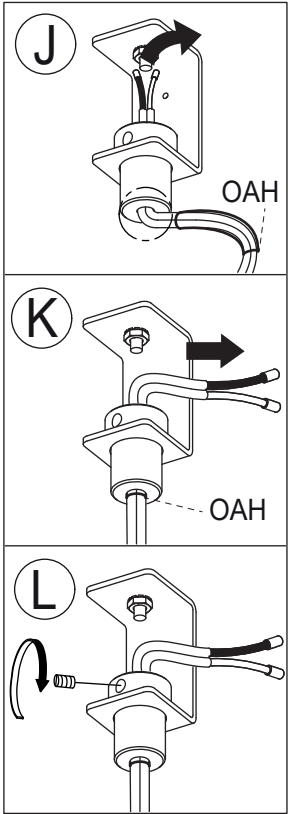
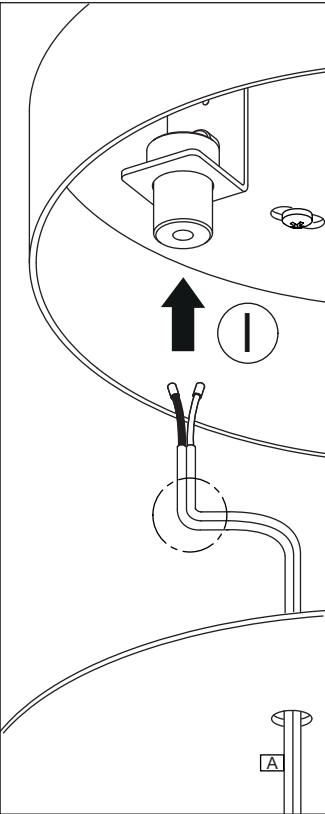
220-240V ~ 50/60Hz MAX 6.3W

700mA 3xMAX 2.1W
integrated LED



 **4.2Kgf**
9.3Lbs

 **x2**





HARPE

CODE 0W034S -- -- AT
3000K

220-240V ~ 50/60Hz MAX 6.3W

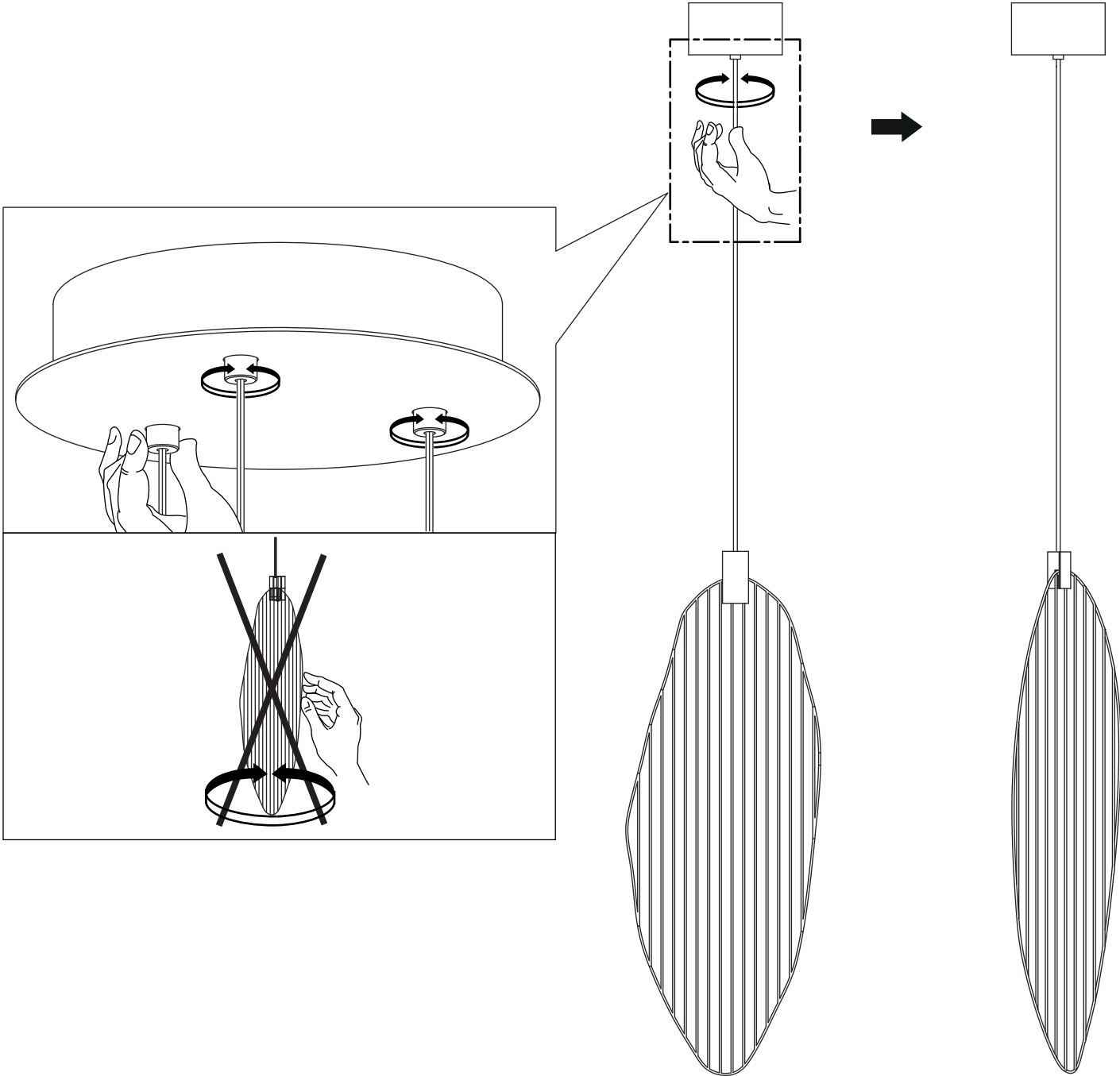
700mA 3xMAX 2.1W

integrated LED



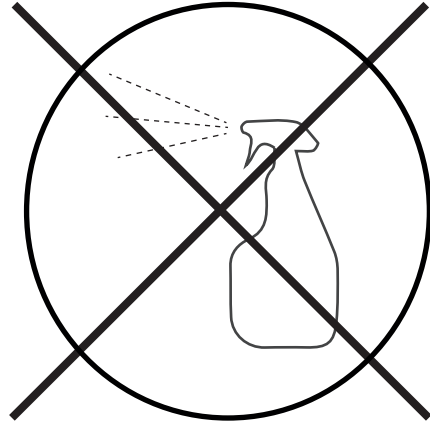
4.2Kgf
9.3Lbs

x2



CLEANING INSTRUCTIONS

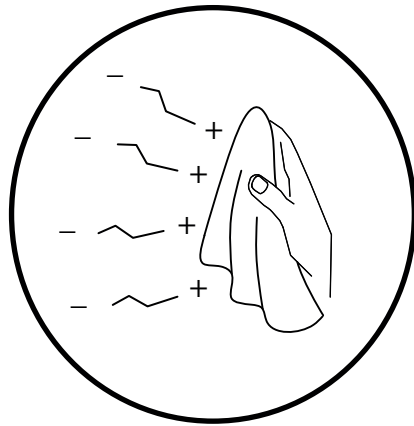
NO



US Do not use chemical products

C Ne pas utiliser des produits chimiques

YES



US Use dry electrostatic cloth

C Utiliser un chiffon électrostatique sec



US Keep these instructions for maintenance | **C** Garder ces instructions pour l'entretien