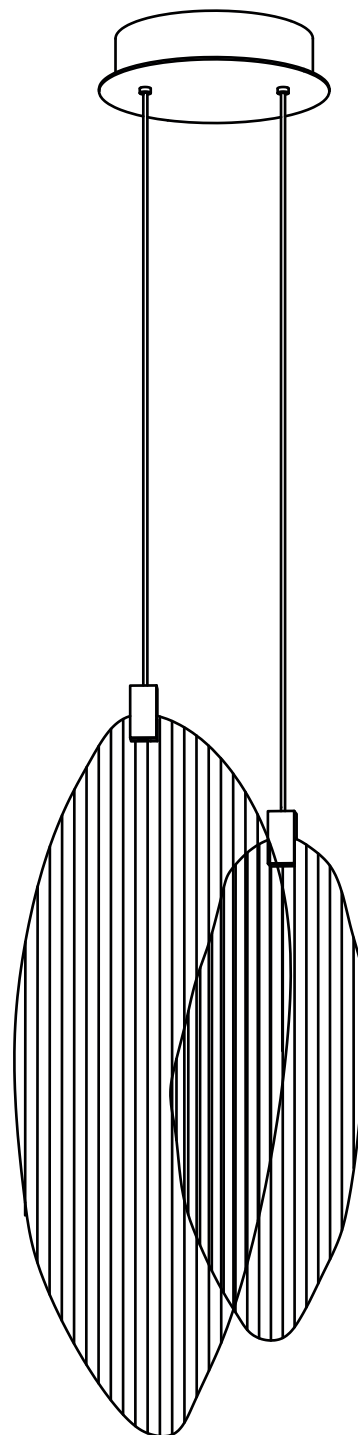


**TERZANI**  
LA LUCE PENSATA

**Harpe** 2 light pendant

**0W025S-AT**





**HARPE**

**CODE 0W025S -- -- AT**  
**3000K**

**220-240V ~ 50/60Hz MAX 4.2W**

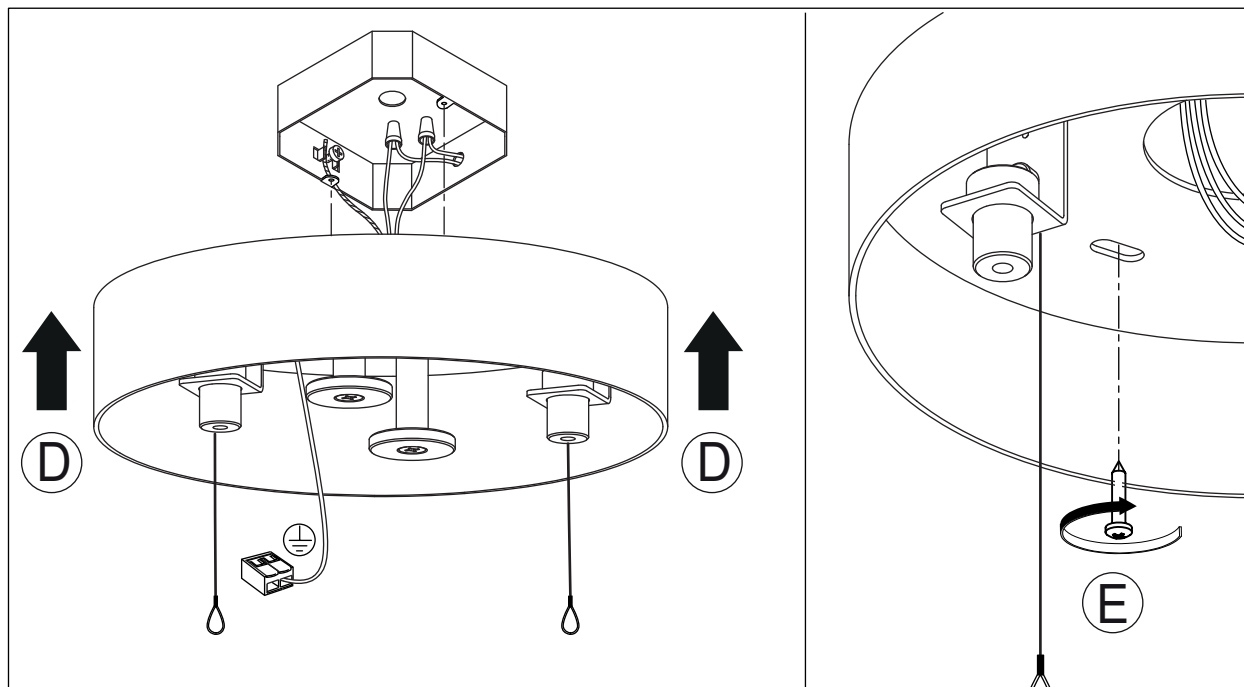
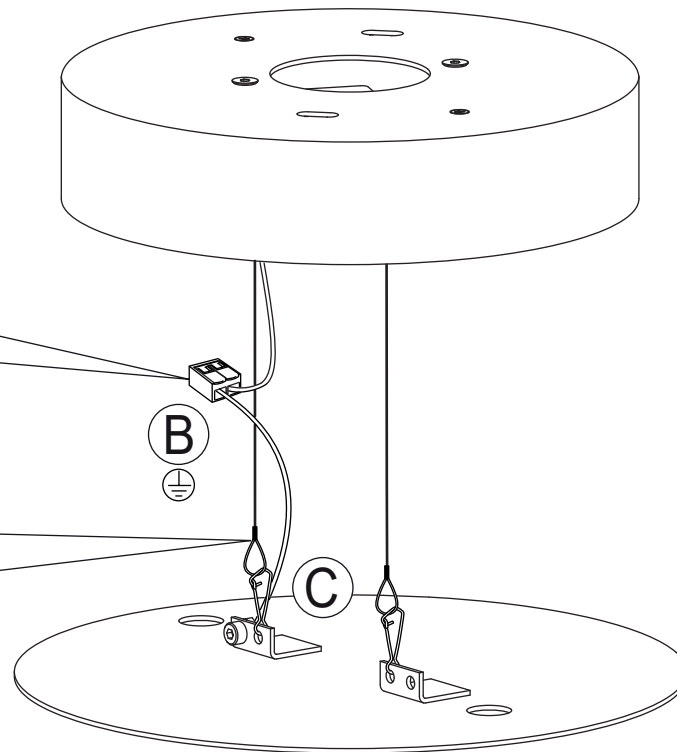
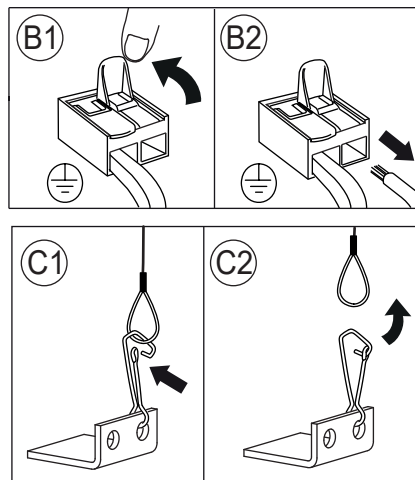
**700mA 2xMAX 2.1W**

**integrated LED**



 **5.6Kgf**  
**12.3Lbs**

 **x2**





**HARPE**

**CODE 0W025S -- -- AT**  
**3000K**

**220-240V ~ 50/60Hz MAX 4.2W**

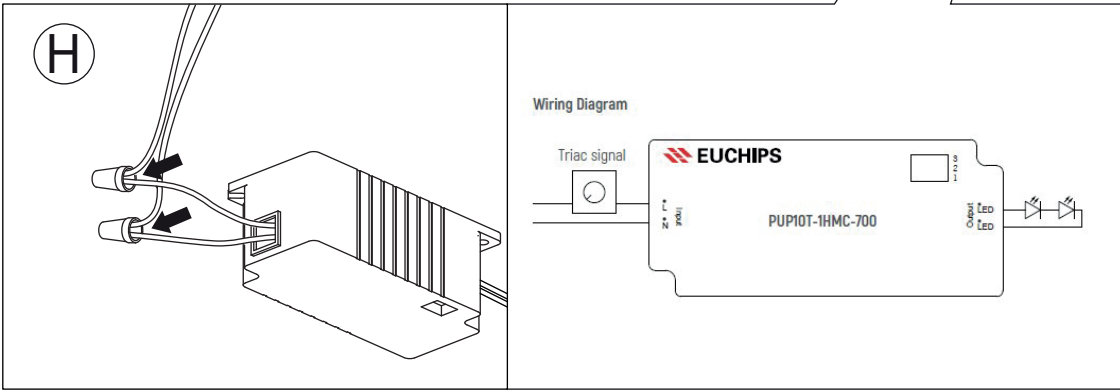
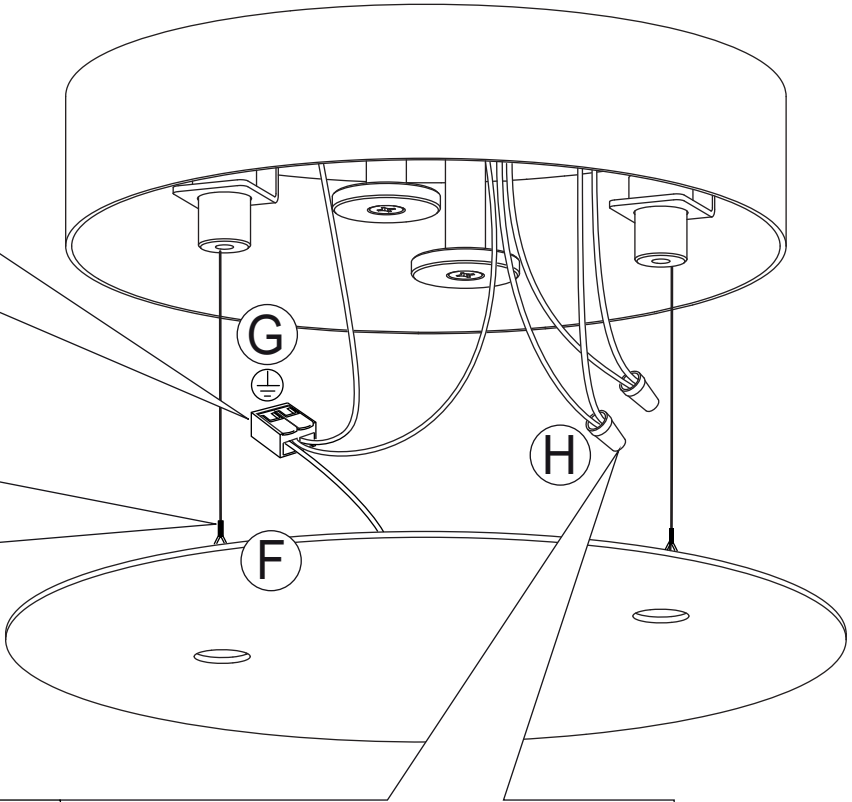
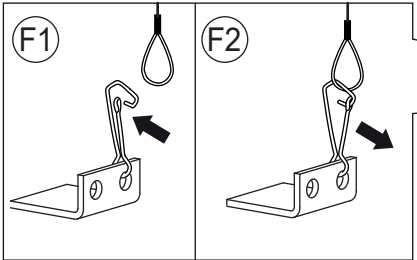
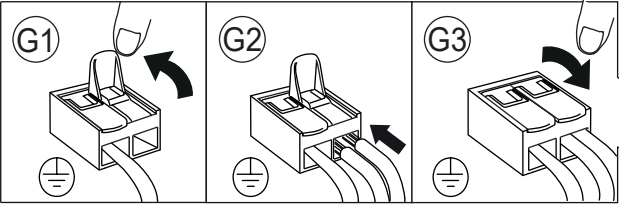
**700mA 2xMAX 2.1W**

**integrated LED**



**5.6Kgf**  
**12.3Lbs**

**x2**



# TERZANI

LA LUCE PENSATA

**HARPE**

**CODE 0W025S -- -- AT**  
**3000K**

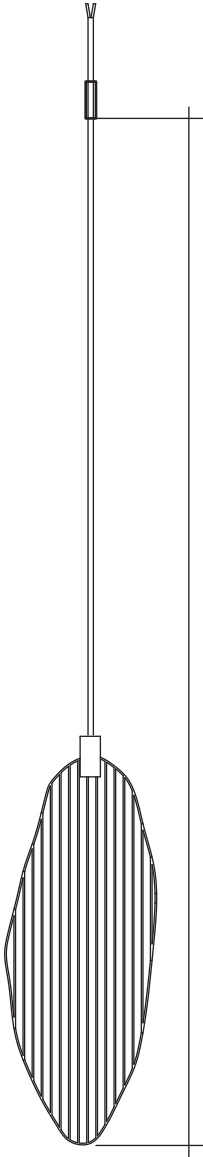
**220-240V ~ 50/60Hz MAX 4.2W**

**700mA 2xMAX 2.1W**  
**integrated LED**

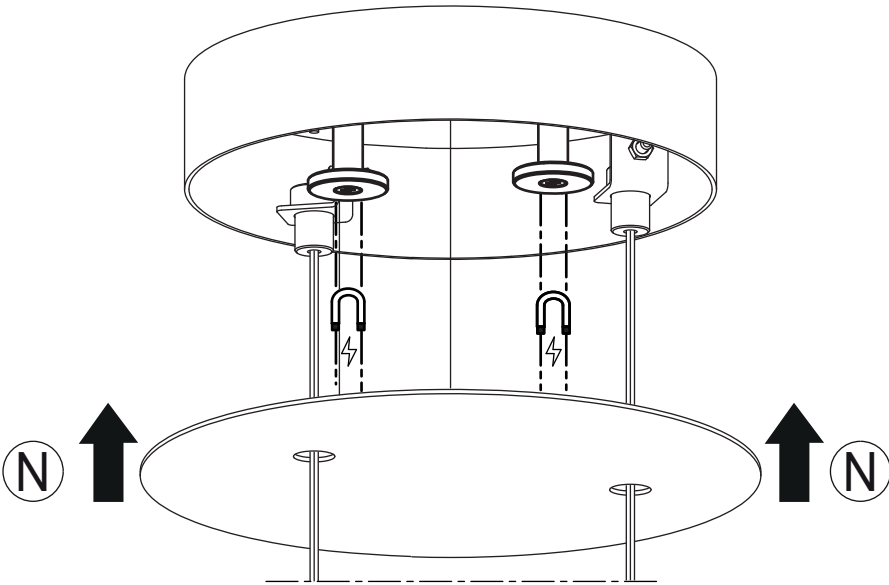
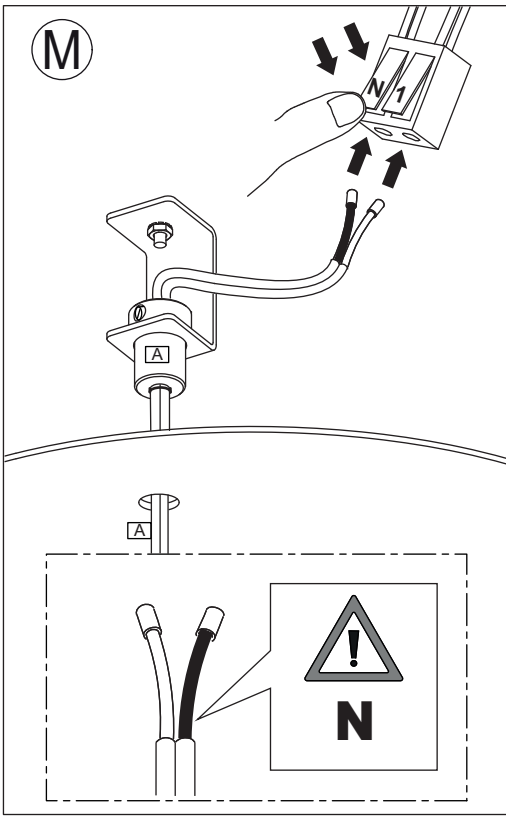
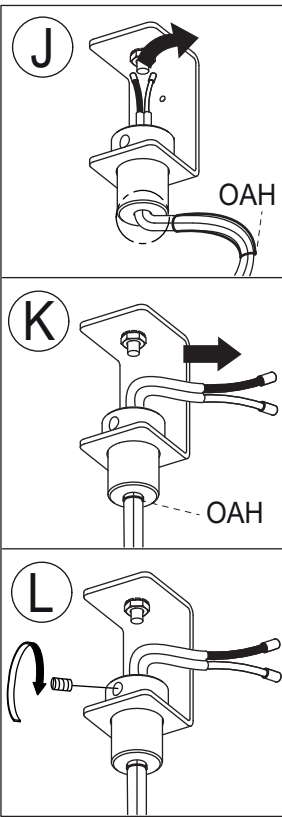
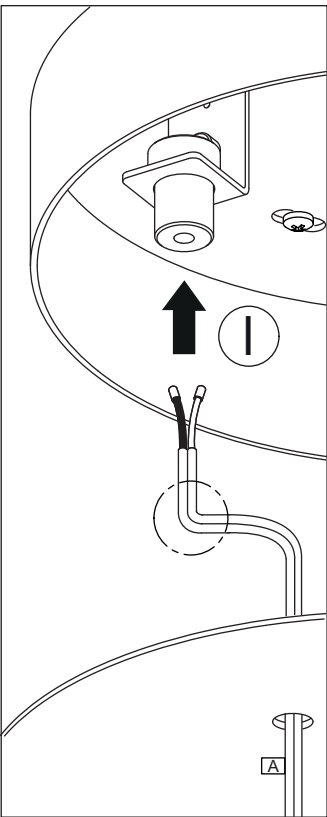


**5.6Kgf**  
**12.3Lbs**

**x2**



**OAH**





HARPE

CODE 0W025S -- -- AT  
3000K

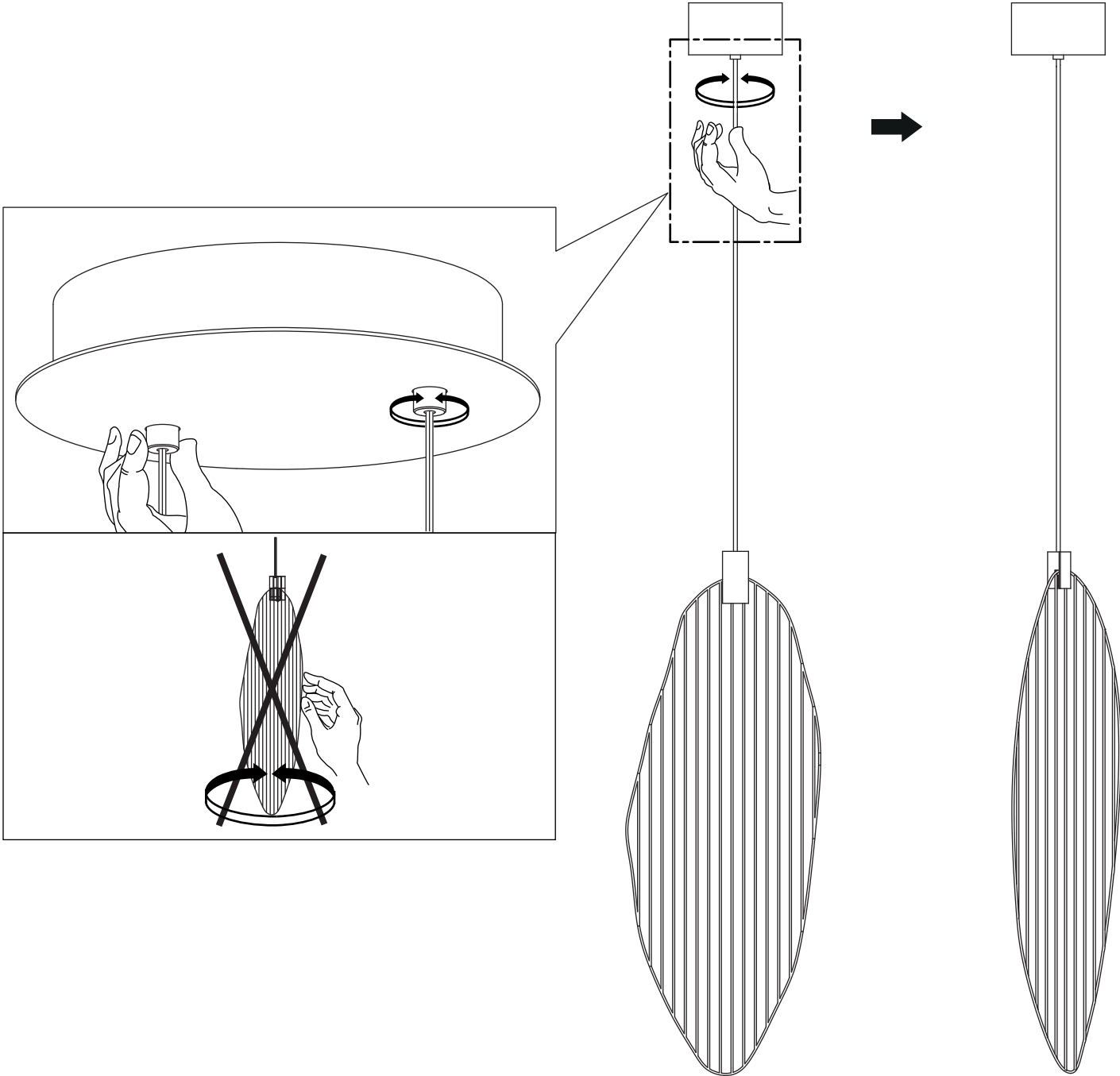
220-240V ~ 50/60Hz MAX 4.2W

700mA 2xMAX 2.1W  
integrated LED



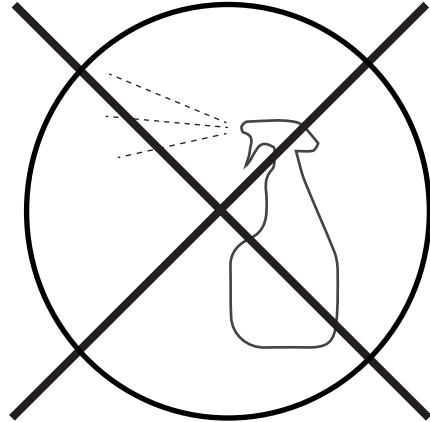
5.6Kgf  
12.3Lbs

x2



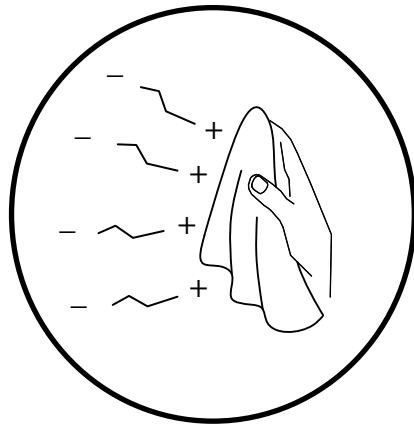
# CLEANING INSTRUCTIONS

**NO**



**US** Do not use chemical products  
**C** Ne pas utiliser des produits chimiques

**YES**



**US** Use dry electrostatic cloth  
**C** Utiliser un chiffon électrostatique sec



**US** Keep these instructions for maintenance | **C** Garder ces instructions pour l'entretien