

# Array

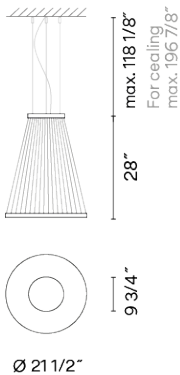
1850

VIBIA

Design By Umut Yamac

The Array hanging lamp includes a series of technical filaments pulled taut between two rings where the light rises creating a colour gradient. The conical shape and intimate dimensions make it ideal for small spaces.

## Spec sheet



undefined: undefined

Any modifications require a minimum order quantity and extra lead time

- Finish**
- 37 Terra Red  
NCS S 4040-Y70R
  - 24 Beige M1  
NCS S 2005-Y50R
  - 47 Green L1  
NCS S 4005-G80Y

**LED** 2700 K

**Dimming** 0-10V

**Installation type** Remote Micro / Surface

**LED** CRI>90 3993 lm 121 2700 K

**Driver** Constant Voltage 90~305 V V 50~60 Hz HZ

Dimmable LED IP20 Multi-volt

**Application** Pendants

**Packaging** Box

Gross weight  
Net weight

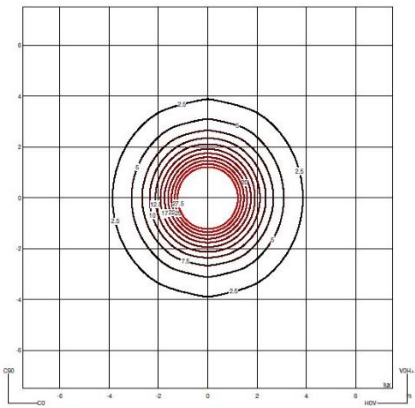
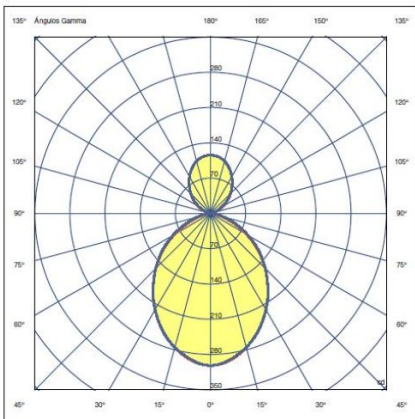
### Lighting effect

#### Volumetric Diffuser

Subtly directed, diffused light that generates a soft hierarchy of light on to the illuminated surface



### Photometric Data



**Efficiency** 26.935 lm/W  
**Coordination System** CG  
**Total Flux** 593 lm  
**Maximum Value** 201.28 cd

All of our products come with a two year standard warranty. Check US & Canada Term and Condition [sales@vibia.com](mailto:sales@vibia.com)

VIBIA, INC.

Office / Oficina  
272 Fernwood Ave. Edison, NJ 08837. USA

International T 732 417 1700  
Spain / Portugal T +34 934 796 970

[sales@vibia.com](mailto:sales@vibia.com)  
[www.vibia.com/us/usa](http://www.vibia.com/us/usa)