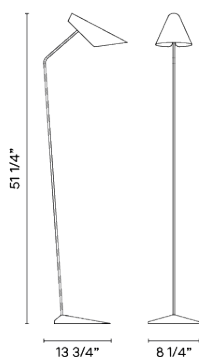


Design By Lievore Altherr Molina

This floor lamp is ideal for reading. Designed by Lievore, Altherr, Molina. Defined by a smooth, flat base and delicate stem, which bends at an angle before meeting the gentle curve of its conical diffuser. Switch on the cable.

Spec sheet



Any modifications require a minimum order quantity and extra lead time

Finish

42 Blue M1
NCS S 5010-B10G

21 Black Grey
NCS S 7000-N

10 White
NCS S 0300-N

37 Terra Red
NCS S 4040-Y70R

25 Beige D1
NCS S 4005-Y50R

LED

2700 K

Dimming

CASAMBI / 0-10 and TRIAC

Installation type

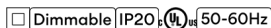
Plug-in

LED

CRI>90 671 lm 115.69
2700 K

Driver

Constant Current 350 90~264 V V
50~60 Hz HZ



Application

Floor and Table Lamps

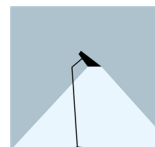
Packaging

1 Box
1.43 m x 0.3 m x 0.3 m
Gross weight 4
Net weight 3
Vol. 0.1287

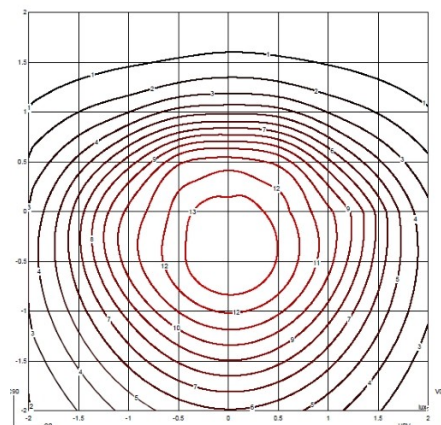
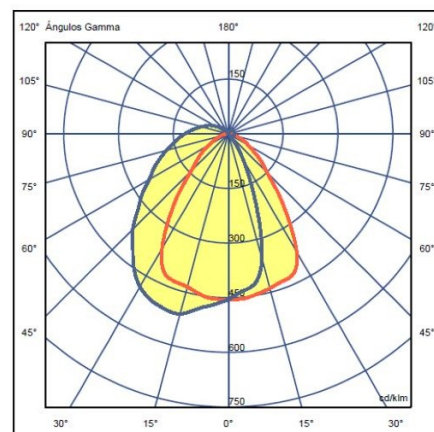
Lighting effect

Close Proximity

Lighting applications for illumination in close proximity to the user



Photometric Data



Efficiency	58.04 lm/W
Coordination System	CG
Total Flux	186 lm
Maximum Value	510.94 cd