

# I.cono

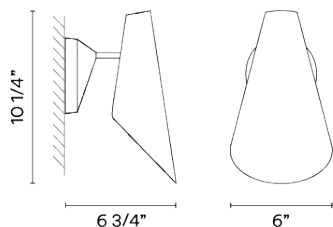
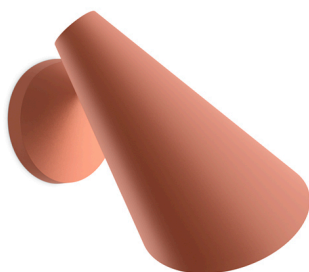
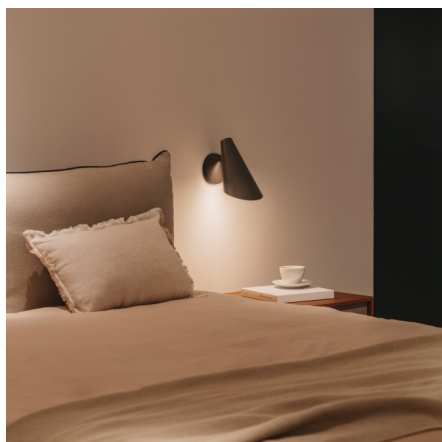
## 0721

Design By Lievore Altherr Molina

# VIBIA

As a wall light, I.Cono's stem is cut short, instead emphasising the sculptural qualities of its shade and circular base. Angled to direct light in the desired direction, the fixture's smooth contours and crisp curves provide a slick, urban look that is softened by a range of warm and elegant hues.

## Spec sheet



Any modifications require a minimum order quantity and extra lead time

### Finish

- 10 White  
NCS S 0300-N
- 25 Beige D1  
NCS S 4005-Y50R
- 37 Terra Red  
NCS S 4040-Y70R
- 21 Black Grey  
NCS S 7000-N
- 42 Blue M1  
NCS S 5010-B10G

### LED

2700 K

### Dimming

On/Off / TRIAC / 0-10V

### Installation type

Surface / Remote basic

### LED

CRI>90 671 lm 115.69  
2700 K

### Driver

Constant Current 350 120~277 V V  
50~60 Hz HZ



### Application

Wall Fixtures

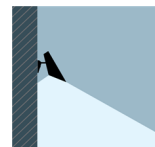
### Packaging

1 Box  
0.21 m x 0.48 m x 0.21 m  
Gross weight 1.1  
Net weight 0.8  
Vol. 0.0211

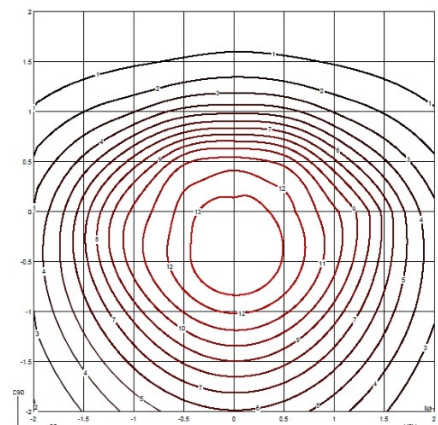
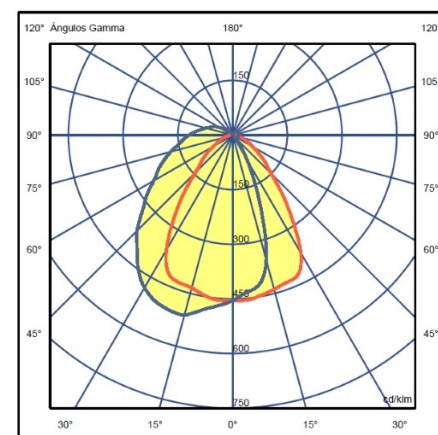
### Lighting effect

#### Close Proximity

Lighting applications for illumination in close proximity to the user



### Photometric Data



Efficiency 58.04 lm/W  
Coordination System CG  
Total Flux 186 lm  
Maximum Value 510.94 cd

All of our products come with a two year standard warranty. Check US & Canada Term and Condition [sales@vibia.com](mailto:sales@vibia.com)

VIBIA, INC.

Office / Oficina

272 Fernwood Ave. Edison, NJ 08837. USA

International T 732 417 1700

Spain / Portugal T +34 934 796 970

[sales@vibia.com](mailto:sales@vibia.com)

[www.vibia.com/us/usa](http://www.vibia.com/us/usa)