

Class

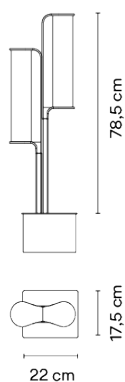
2805

Design By Sebastian Herkner

VIBIA

Class is a double outdoor beacon lamp in which matter and light come together in a single body. The rigid stem rises elegant, while the light passes softly through its cylinders, asymmetrically placed.

Model Sheet



Finish 11 Black
NCS S 8500-N

LED 2700 K

Dimming Casambi / DALI / Push

Installation type Remote basic / Built-in

LED  CRI>90 990 lm 141
2700 K

Driver Constant Current 300 220~240 V V
50~60 Hz HZ

☐ Dimmable ☒ LED ☒ IP65 ☒ 50-60Hz 

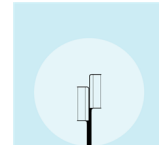
Application Outdoor lamps

Packaging 2 Box
1.18 m x 0.35 m x 0.37 m
Gross weight 29.6
Net weight 25.6
Vol. 0.1846

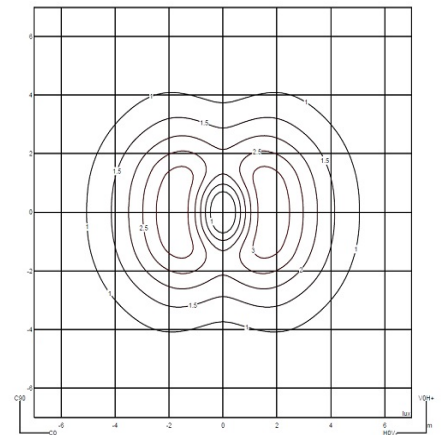
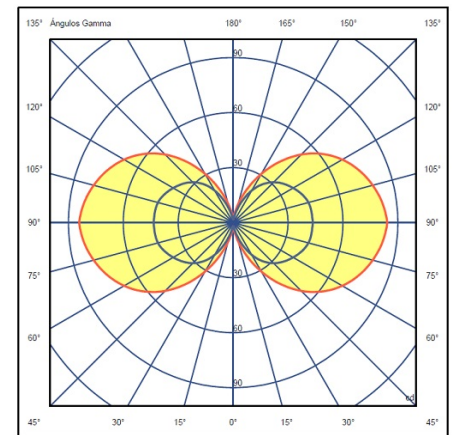
Lighting effect

Volumetric Diffuser

Subtly directed, diffused light that generates a soft hierarchy of light on to the illuminated surface



Photometric Data



Efficiency 94.86 lm/W
Coordinate System CG
Total Flux 664.03 lm
Maximum Value 85.44 cd

Min. quantity, upcharge and extra lead time apply

All of our products come with a five-year warranty. Check our legal terms at www.vibia.com/warranty

Vibia Lighting, S.L.U.

Office / Oficina
Progrés 4-6, 08850 Gavà. Barcelona, Spain.

International T +34 934 796 971
Spain / Portugal T +34 934 796 970

customer.service@vibia.com
vibia.com