

## Africa sofa 3 pax

by Eugeni Quitllet

Vondom's Africa furniture collection, designed by Eugeni Quitllet, captures the essence of simplicity and originality. With pieces that combine beauty and functionality, Africa is ideal for those looking for elegant and comfortable outdoor furniture. "The simplest things are the most original... The most original thing is to be simple...", declares the designer, encapsulating the philosophy of this collection.



## Info

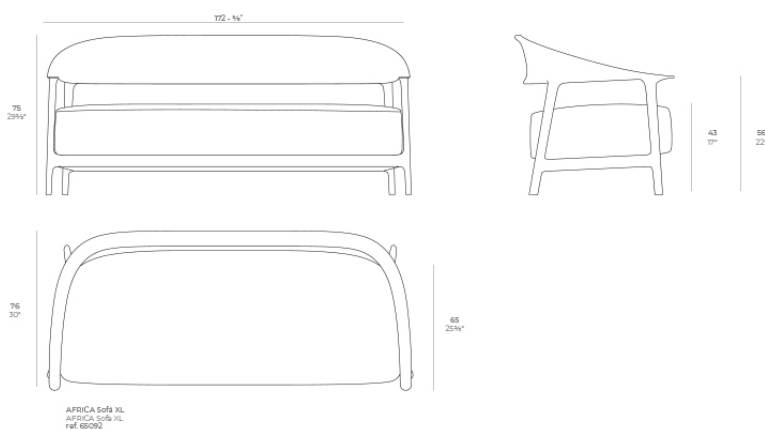
---

### Description

Eugeni Quittlet adds comfort to its most iconic collection. Its lightweight and resistant monoblock structure is combined with an upholstered seat that enhances the sensorial experience without renouncing the formal sobriety of the design. Available

in five shades and customisable with outdoor fabrics, its padding in different densities provides a soft and ergonomic welcome. A versatile and durable piece, conceived to inhabit outdoor and indoor spaces with the same naturalness.

Weight: 23.51 Kg



## Finishes

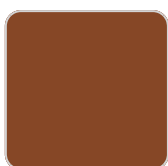
---

### finishes

---

#### Basic

Ref. 65092



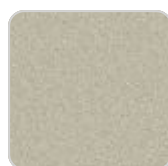
clay



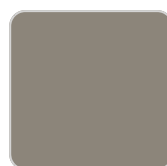
white



black



ecu



tortora

Available in various colors

#### Lacquered

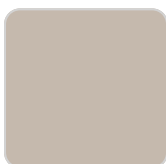
Ref. 65092F



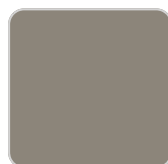
white 3101



black 3102



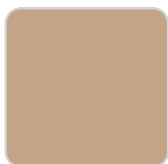
ecu 3103



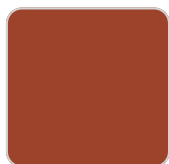
tortora 3104



cream 3117



camel 3120



clay

—

## fabric

---

### GETARIA

Ref. 65092RCO



oasis 10007 getaria



garnet 10046 getaria



camel 10033 getaria



pearl 10006 getaria



black 10044 getaria



gallant 10025 getaria



anthracite 10043  
getaria



blue 10024 getaria



oversea 10002 getaria



gray 10042 getaria



ocean 10023 getaria



white 10041 getaria



emerald 10016  
getaria



moon 10040 getaria



niord 10015 getaria



brown 10050 getaria



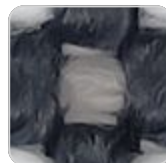
terra 10039 getaria



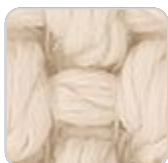
dune 10009 getaria



tortora 10048 getaria



granite 10008 getaria



cream 10047 getaria



iceberg 10037 getaria

Group 2. Premium high density 100% acrylic fabric, available in a wide range of colors.

### BAIONA

Ref. 65092RCO



gray 10113 baiona



camel 10104 baiona



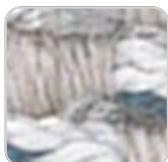
cream 10103 baiona



blue 10112 baiona



tortora 10102 baiona



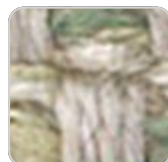
ocean 10111 baiona



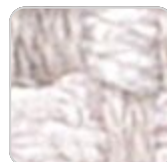
ecru 10101 baiona



green 10110 baiona



jade 10109 baiona



white 10100 baiona



brown 10108 baiona



garnet 10107 baiona



black 10114 baiona



clay 10106 baiona

Group 1C. High density 100% acrylic fabric, which provides a solid feel. It has an irregular pattern that adds a handcrafted touch.

## CALELLA

Ref. 65092RCO



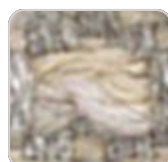
jade 10126 calella



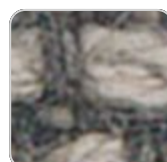
clay 10125 calella



mustard 10124 calella



cream 10123 calella



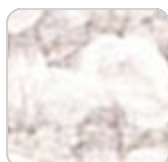
tortora 10122 calella



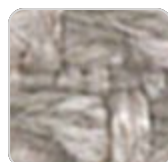
anthracite 10129  
calella



ecru 10121 calella



white 10120 calella



gray 10128 calella



blue 10127 calella

Group 1C. PFAS-free 100% acrylic fabric with a rich and unusual texture and an exceptional softness, which enhances the comfort of the furniture.

## FISTERRA

Ref. 65092RCO



cream 10132 fisterra



white 10130 fisterra



ecru 10131 fisterra



tortora 10135 fisterra



camel 10134 fisterra



mustard 10133  
fisterra



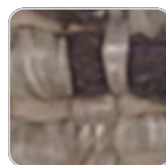
peach 10146 fisterra



clay 10137 fisterra



garnet 10138 fisterra



brown 10136 fisterra



olive 10145 fisterra



jade 10139 fisterra



green 10140 fisterra



ocean 10141 fisterra



blue 10142 fisterra



gray 10143 fisterra



anthracite 10144  
fisterra



black 10147 fisterra

Group 1C. 100% acrylic fabric, with a distinctive irregular marbled pattern and a soft feel.

PORTONOVO

Ref. 65092RCO



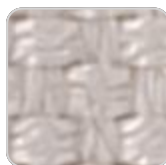
green 10160  
portonovo



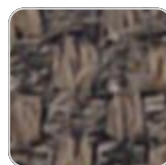
tortora 10152  
portonovo



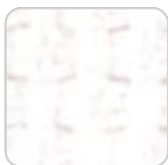
jade 10159 portonovo



ecru 10151 portonovo



brown 10158  
portonovo



# VONDOM

white 10150  
portonovo



black 10165  
portonovo



garnet 10157  
portonovo



clay 10156 portonovo



anthracite 10164  
portonovo



mustard 10155  
portonovo



gray 10163 portonovo



camel 10154  
portonovo



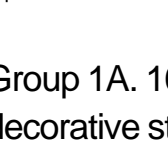
blue 10162 portonovo



ocean 10161  
portonovo



cream 10153  
portonovo



Group 1A. 100% acrylic fabric, with a flat and simple design, which adapts to any decorative style.

## ZUMAIA

Ref. 65092RCO



black 10205 zumaia



green 10204 zumaia



blue 10203 zumaia



garnet 10202 zumaia



cream 10201 zumaia



white 10200 zumaia

Group 2. Elegant 100% acrylic fabric, with a soft terry, pleasant to the touch and a unique color combination.

## SUANCES

Ref. 65092RCO



white 10300 suances



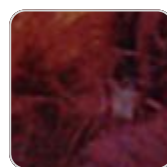
peach 10316 suances



brown 10308 suances



black 10315 suances



garnet 10307 suances



anthracite 10314  
suances



clay 10306 suances



gray 10313 suances



mustard 10305  
suances



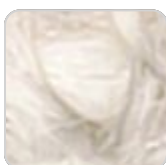
blue 10312 suances



camel 10304 suances



ocean 10311 suances



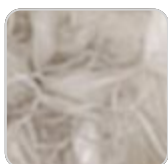
cream 10303 suances



tortora 10302 suances



green 10310 suances



ecru 10301 suances



olive 10317 suances



jade 10309 suances

Group 2. Bocale fabric, which stands out for its warmth and softness, with matching colors that add depth and elegance.

## RIBADEO

Ref. 65092RCO



clay 10326 ribadeo



anthracite 10334  
ribadeo



mustard 10325  
ribadeo



gray 10333 ribadeo



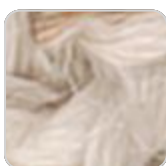
camel 10324 ribadeo



blue 10332 ribadeo



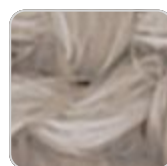
ocean 10331 ribadeo



cream 10323 ribadeo



green 10330 ribadeo



tortora 10322 ribadeo



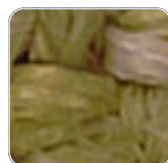
mint 10337 ribadeo



jade 10329 ribadeo



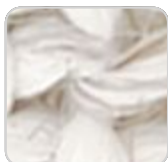
ecru 10321 ribadeo



olive 10336 ribadeo



brown 10328 ribadeo



white 10320 ribadeo



garnet 10327 ribadeo



peach 10335 ribadeo

Group 2. Soft fabric with marbled yarns of different thicknesses that create a rich and visually interesting texture. Its Linen look adds a touch of natural style.

## LOURO

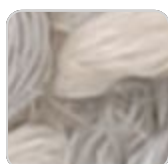
Ref. 65092RCO



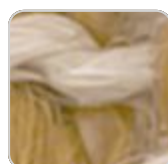
anthracite 10354 louro



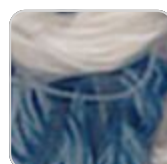
clay 10346 louro



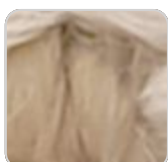
gray 10353 louro



mustard 10345 louro



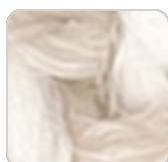
blue 10352 louro



camel 10344 louro



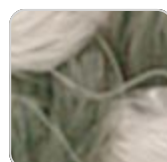
ocean 10351 louro



cream 10343 louro



tortora 10342 louro



green 10350 louro



jade 10349 louro



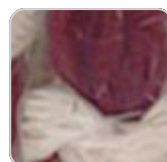
olive 10356 louro



brown 10348 louro



peach 10355 louro



garnet 10347 louro

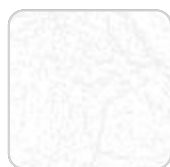
Group 2. Soft and versatile fabric, which presents a neutral base color that makes it easy to combine with different colors and fabrics.

## ALTEA

Ref. 65092RCO



tortora 1102 altea



white 1100 altea



camel 1120 altea



clay 1122 altea



garnet 1106 altea



brown 1104 altea



jade 1125 altea



ocean 1123 altea



gray 1101 altea



anthracite 1124 altea



black 1105 altea

Group 1A. Soft outdoor fabric with leather-like texture.

## AROUSA

Ref. 65092RCO



tortora 1209 arousa



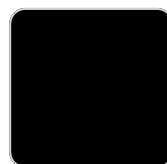
camel 1230 arousa



clay 1231 arousa



brown 1214 arousa



jade 1235 arousa



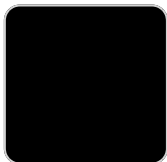
gray 1208 arousa



anthracite 1210  
arousa

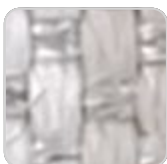
Group 1B. Soft outdoor fabric with shiny finish.

Ref. 65092RCO



## LLANES

Ref. 65092RCO



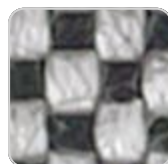
gray 10182 llanes



tortora 10181 llanes



crema 10180 llanes

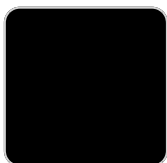


anthracite 10183  
llanes

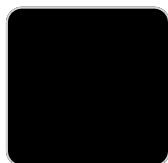
## Group 3A.

## MORAIRA

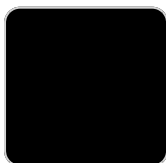
Ref. 65092RCO



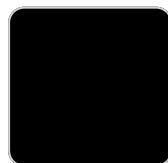
ecru 10365 moraira



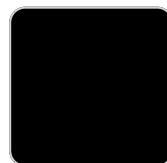
gray 10364 moraira



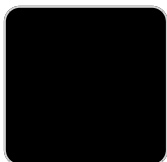
blue 10363 moraira



green 10362 moraira



clay 10361 moraira

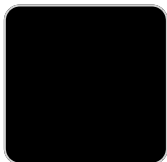


camel 10360 moraira

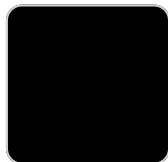
## Group 3B.

## TEGUISE

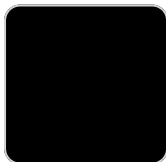
Ref. 65092RCO



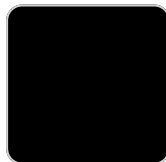
ecru 10375 teguise



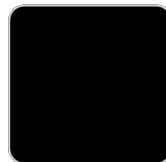
gray 10374 teguise



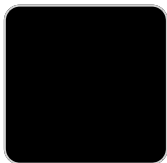
blue 10373 teguise



green 10372 teguise



clay 10371 teguise



camel 10370 teguise

## Group 3B.

## ROSES

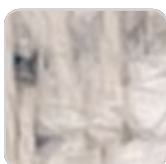
Ref. 65092RCO



garnet 10402 roses



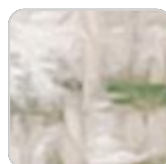
cream 10400 roses



blue 10405 roses



tortora 10404 roses



green 10403 roses

## Group 3A.

## Ambients

---

