

INSTALLATION INSTRUCTION

KENRIC TRIMLESS - REMODEL/NEW CONSTRUCTION

R3JRAL-WCS-WT, R3JSAL-WCS-WT

WAC®

SAFETY INSTRUCTION

IMPORTANT: NEVER attempt any work without shutting off the electricity.

- Read all instructions before installing.
- System is intended for installation by a qualified electrician in accordance with the National Electrical Code and local regulations.
- Go to the main fuse box, or circuit breaker. Place the main power switch in the "OFF" position and unscrew the fuse(s) or switch "OFF" the circuit breaker switch(es) that control the power to the fixture or room that you are working on.
- Place the wall switch in the "OFF" position.

AVERTISSEMENT:

IMPORTANT : Coupez l'électricité avant TOUTE manipulation.

- Lisez toutes les instructions avant d'installer.
- Système est destiné à être installé par un électricien qualifié en conformité avec le code national de l'électricité et les règlements locaux.
- Accédez au panneau central de disjoncteurs ou de fusibles de votre demeure et placez l'interrupteur principal en position d'arrêt (« OFF »).
- Placez l'interrupteur mural en position d'arrêt (« OFF »).

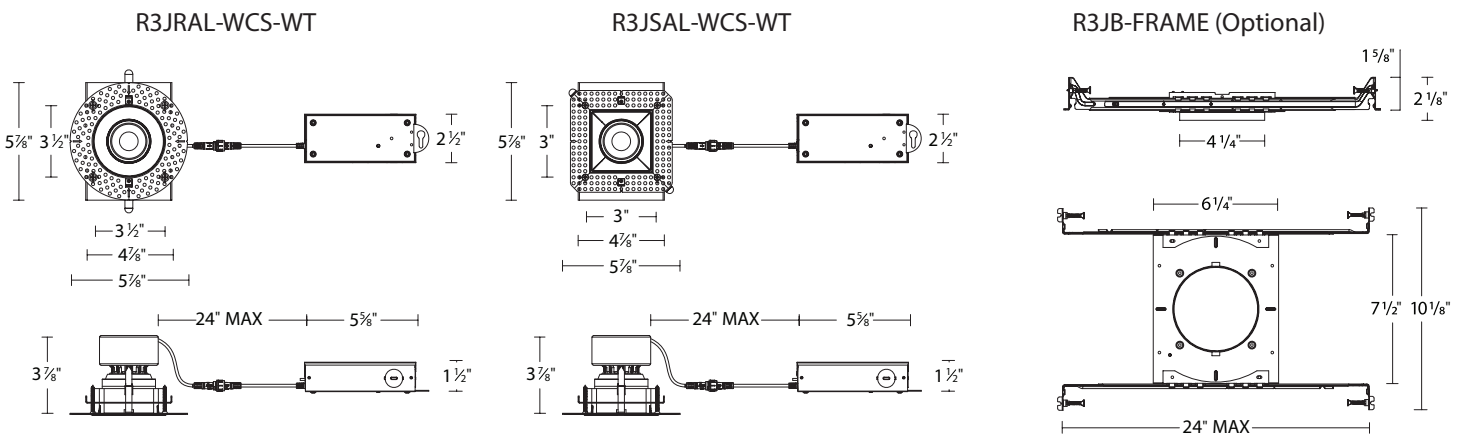
CAUTION:

All parts must be used as indicated in these instructions. Do not substitute any parts, leave parts out, or use any parts that are worn out or broken. Failure to follow could invalidate the ETL/cETL listing of this fixture.

OVERVIEW:

Housing is new construction Airtight IC or remodel Airtight IC (Refer to tables below).

NEW CONSTRUCTION OVERALL DIMENSIONS



SPECIFICATIONS	
Input	120V-277V
Installation	IC Airtight
Dimming	ELV / TRIAC / 0-10V

INSTALLATION REQUIREMENTS	
Ceiling Thickness	1/2" to 1 1/2"
Minimum Plenum Height Requirement	4"

INSTALLATION INSTRUCTION

KENRIC TRIMLESS - REMODEL/NEW CONSTRUCTION

R3JRAL-WCS-WT, R3JSAL-WCS-WT

WAC®

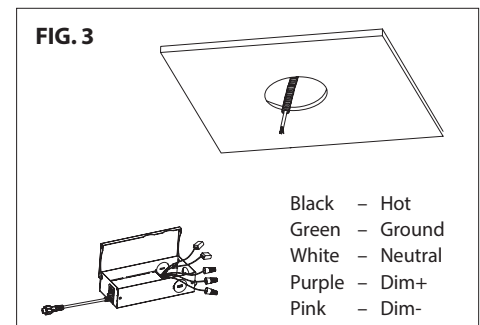
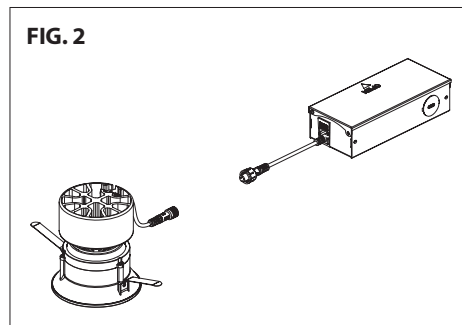
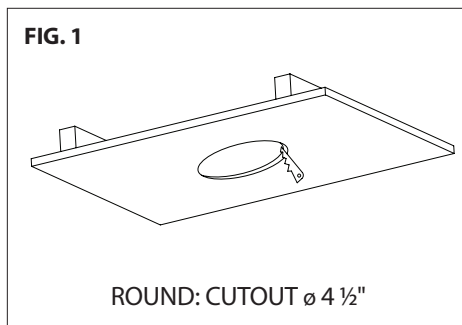
REMODEL INSTALLATION

1. At the point of installation, cut a $\varnothing 4 \frac{1}{2}$ " round hole for a round trim or a square trim (**See FIG. 1**).
2. Ceiling thickness range is $\frac{1}{2}$ " to $1 \frac{1}{2}$ ".
3. Remove fixture from packaging (**See FIG. 2**).
4. Pull building supply wires through ceiling cutout and open fixture junction box cover. Remove desired housing knockout and feed building wires into housing using appropriate connector.
5. Connect fixture wires to building wires (**See FIG. 3**):
Connect each supply wire with appropriate junction box wire connector. This fixture features electronic low voltage (ELV) or TRIAC or 0-10V dimming capabilities.

To utilize ELV or TRIAC, wire black (line hot), white (line neutral) and green (ground) in accordance to dimmer specifications.

To utilize 0-10V dimming, wire purple (dim+), pink (dim-), black (line hot), white (line neutral) and green (ground) in accordance to dimmer specifications.

When not using a dimmer, connect black fixture wire to hot, white fixture wire to neutral and green fixture wire to ground. Leave all other wires capped individually.



6. Place all wiring and connectors back in junction box and close the junction box's cover. Slide the CCT selection switch to choose the desired CCT (**FIG. 4**).
7. Guide junction box through the cut hole and secure appropriately (**See FIG. 5**).
8. Insert upper frame through ceiling opening (**See FIG. 6**).
9. Raise speckle frame to ceiling cut out and insert alignment bars into upper frame alignment slots (**See FIG. 7**).
10. With upper frame and speckle frame flush with both ceiling surfaces, hand bend the alignment bars parallel to ceiling. Insert and tighten four appropriately sized drywall screws through countersink holes on speckle frame, through ceiling and into holes in upper frame. Do not over tighten screw (**See FIG. 8**).
11. Insert plaster shield inside trim opening. Apply plaster or spackle over speckle frame and sand surface dry for finished look (**See FIG. 9**).
12. Remove the plaster shield when finishing is complete (**See FIG. 10**).
13. Connect trim and junction cable connector and install the trim assembly into the ceiling (**See FIG. 11**).

wacighting.com
Phone (800) 526.2588
Fax (800) 526.2585

Headquarters, East Manufacturing Facility
44 Harbor Park Drive
Port Washington, NY 11050

South East Manufacturing Facility
1600 Distribution Ct
Lithia Springs, GA 30122

Central Manufacturing Facility
1700 South J Elmer Freeway, Ste 100
Cedar Hill, TX 75104

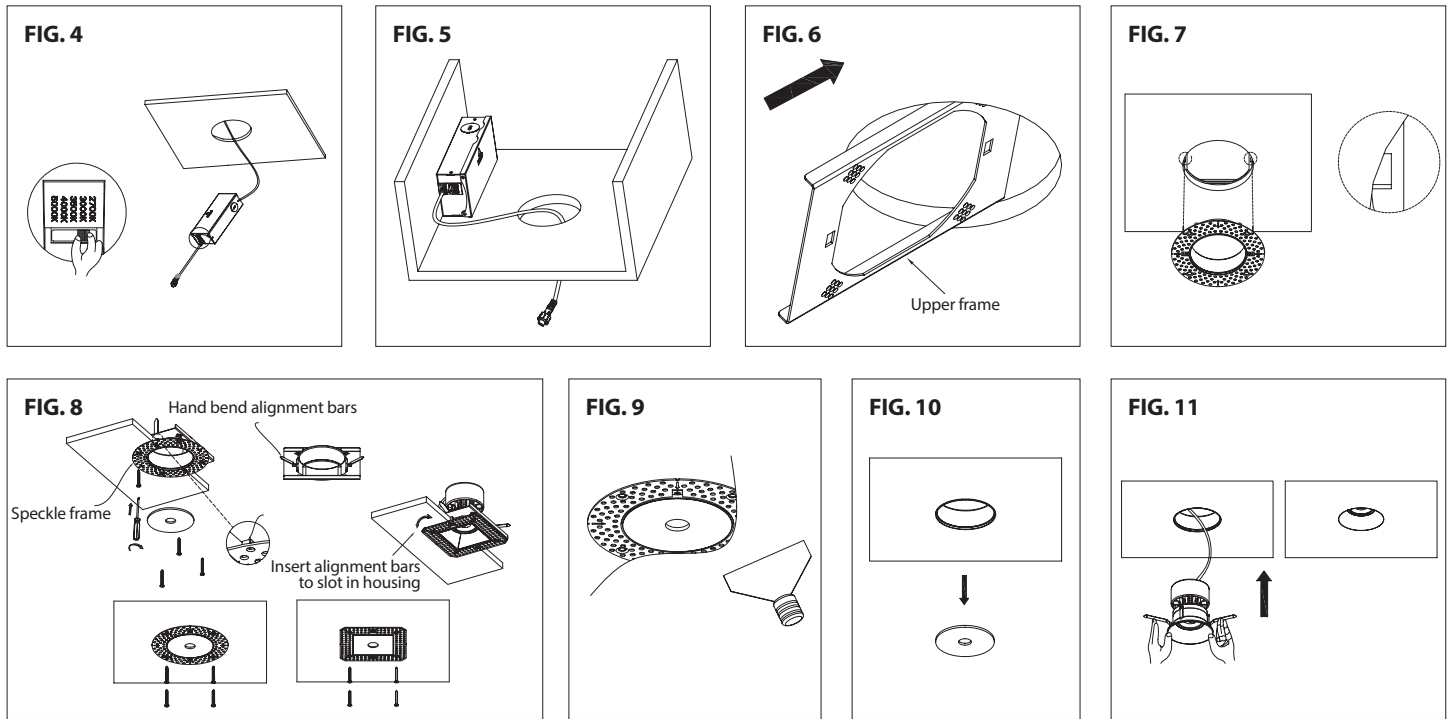
West Manufacturing Facility
1750 S Archibald Ave
Ontario, CA 91761

INSTALLATION INSTRUCTION

KENRIC TRIMLESS - REMODEL/NEW CONSTRUCTION

R3JRAL-WCS-WT, R3JSAL-WCS-WT

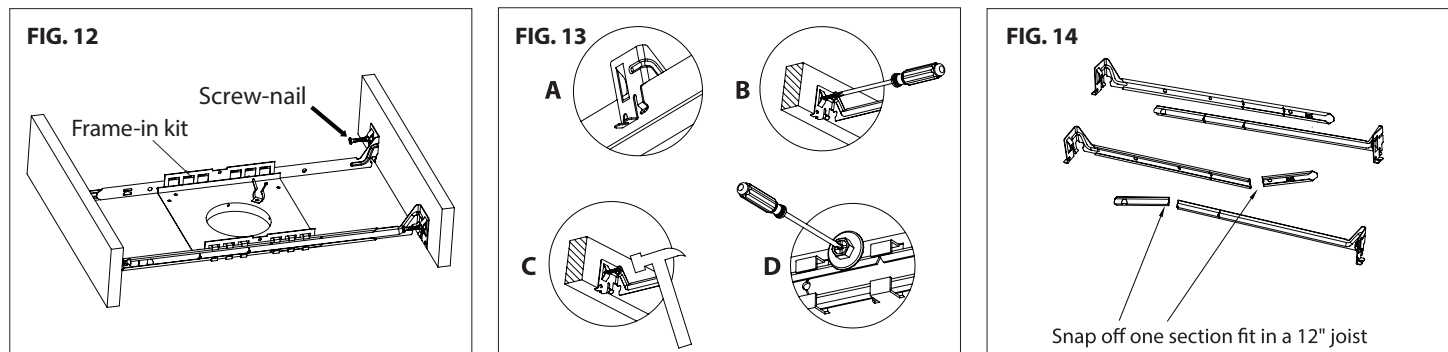
WAC®



NEW CONSTRUCTION INSTALLATION (With Optional Frame-In Kit R3JB-FRAME)

Note: Upper frame is not needed for new construction installation. Disregard properly.

1. Install the frame-in kit using two hanger bars (24 1/2" max). Bars are notched on the ends to fit over "T" bars in suspended ceilings (See FIG. 13A).
2. Hanger bars include a captive mounting "screw-nail" for ease of installation (See FIG. 12). Align the bottom of the hanger bar with the bottom of the wood joist. Secure the "screw-nail" on each end by screwdriver (See FIG. 13B), or by hammer (See FIG. 13C).
3. Slide fixture along bar hangers into desired location. Use locking screws to secure (See FIG. 13D).
4. To shorten hanger bars to fit in a 12" joist, snap off one section of the hanger bars (See FIG. 14).
5. Cut a 4 1/2" diameter hole in the ceiling at the point of installation and install ceiling (See FIG. 1).
6. Pull building supply wires through ceiling cutout and open fixture junction box cover. Remove desired housing knockout and feed building wires into housing using appropriate connector.



wacighting.com
Phone (800) 526.2588
Fax (800) 526.2585

Headquarters, East Manufacturing Facility
44 Harbor Park Drive
Port Washington, NY 11050

South East Manufacturing Facility
1600 Distribution Ct
Lithia Springs, GA 30122

Central Manufacturing Facility
1700 South J Elmer Freeway, Ste 100
Cedar Hill, TX 75104

West Manufacturing Facility
1750 S Archibald Ave
Ontario, CA 91761

INSTALLATION INSTRUCTION

KENRIC TRIMLESS - REMODEL/NEW CONSTRUCTION

R3JRAL-WCS-WT, R3JSAL-WCS-WT

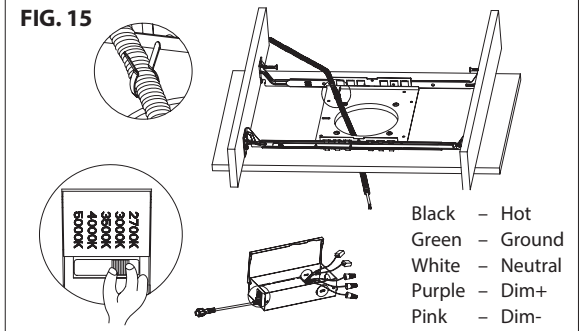
WAC®

7. Connect fixture wires to building wires (See **FIG. 15**):
Connect each supply wire with appropriate junction box connector. This fixture features electronic low voltage (ELV) or TRIAC or 0-10V dimming capabilities.

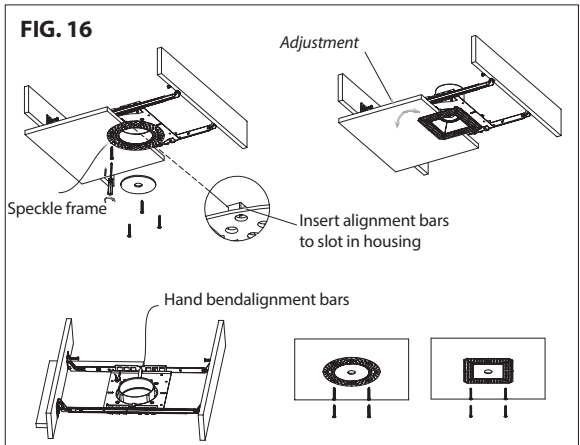
To utilize ELV or TRIAC, wire black (line hot), white (line neutral) and green (ground) in accordance to dimmer specifications.

To utilize 0-10V dimming, wire purple (dim+), pink (dim-), black (line hot), white (line neutral) and green (ground) in accordance to dimmer specifications.

When not using a dimmer, connect black fixture wire to hot, white fixture wire to neutral and green fixture wire to ground. Leave all other wires capped individually.



8. Place all wiring and connectors back in junction box and close the junction box's cover. Slide the CCT selection switch to choose the desired CCT (See **FIG. 15**).
9. Guide junction box through the ceiling opening and secure appropriately.
10. Raise speckle frame to ceiling cut out and insert alignment bars into frame-in kit alignment slots (See **FIG. 16**).
11. With frame-in kit and speckle frame flush with both ceiling surfaces, hand bend the alignment bars parallel to ceiling. Insert and tighten four appropriately sized drywall screws through countersink holes on speckle frame, through ceiling and into holes in frame-in kit. Do not over tighten screws (**FIG. 16**).
12. Follow steps 9 through 11 under "REMODEL INSTALLATION" section to complete the installation.



ADJUSTMENT FEATURES

The trims can be vertically adjusted between 0-30 degrees, and can self-stop in place once the adjustment is done.

Use one finger to push up one side of trim edge to adjust to the desired angle (See **FIG. 17**).

FIG. 17

