

ASSEMBLY INSTRUCTION

La Terra



WOUD

MY STRONGEST SOURCE OF
INSPIRATION IS NATURE. IT WAS THE
SAME WITH THE LA TERRA TABLES.
THE TRANQUILLITY OF A BAREFOOT
WALK ON SOFT PEBBLES.
EXPERIENCING THE STONES IN MUTED
COLOURS AND THEIR INFINITE SHAPE
VARIANTS.

I HOPE THAT MY DESIGN WILL
ACCOMPANY YOU FOR A VERY LONG
TIME AND BRING A TOUCH OF NATURE
AND CALM INTO YOUR HOME.

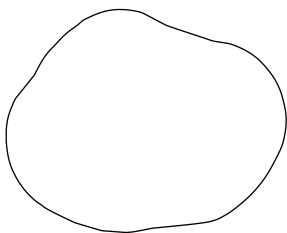
A handwritten signature in black ink, reading 'Agnes Morguet'. The script is fluid and cursive, with the first letter 'A' being particularly large and stylized.

AGNES MORGUET

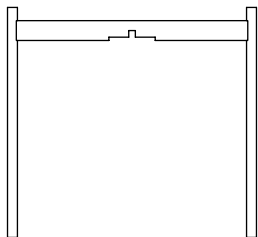
TAKE CARE

WE HAVE NOW HANDED OVER
ONE OF OUR DARLINGS TO YOU.
NOW IT IS YOURS. TAKE GOOD
CARE OF IT. YOU CAN READ THE
CARE INSTRUCTIONS FOR ALL
OUR MATERIALS AT OUR WEBSITE.

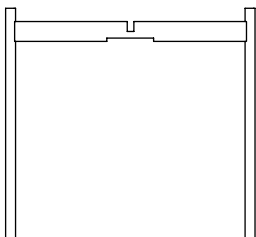
WOUD.DK/TAKECARE



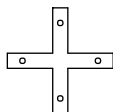
A X 1



B X 1



C X 1



D X 1



E X 4



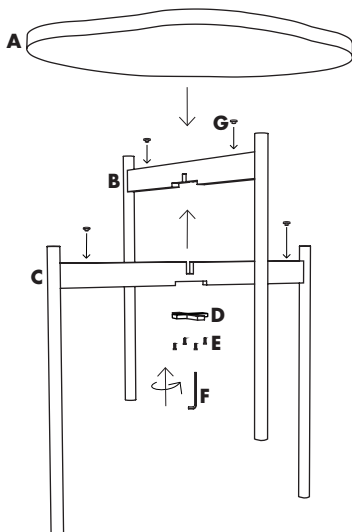
F X 1



G X 4

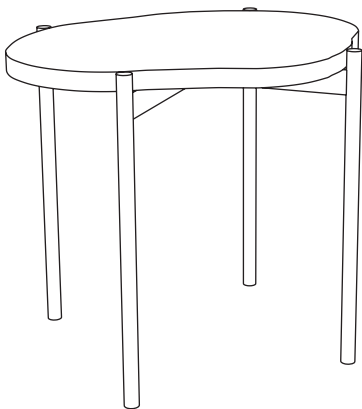
STEP 1

MOUNT THE LEGS TOGETHER WITH THE CROSS (B+C+D) AND FIX IT
WITH THE SCREWS AND HEX KEY (E+F)
ADD THE NON SLIP PROTECTOR PADS (G)
THEN PLACE THE TABLE TOP (A) ON TOP



SAFETY WARNING

DO NOT STAND ON THE TABLE



DESIGNED BY
AGNES MORGUET