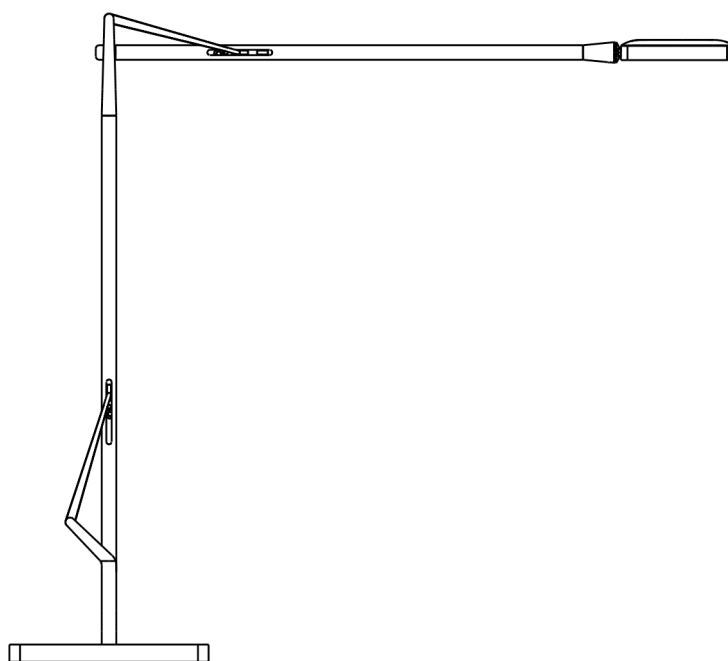


KELVIN LED GM

Designed by Antonio Citterio, 2009

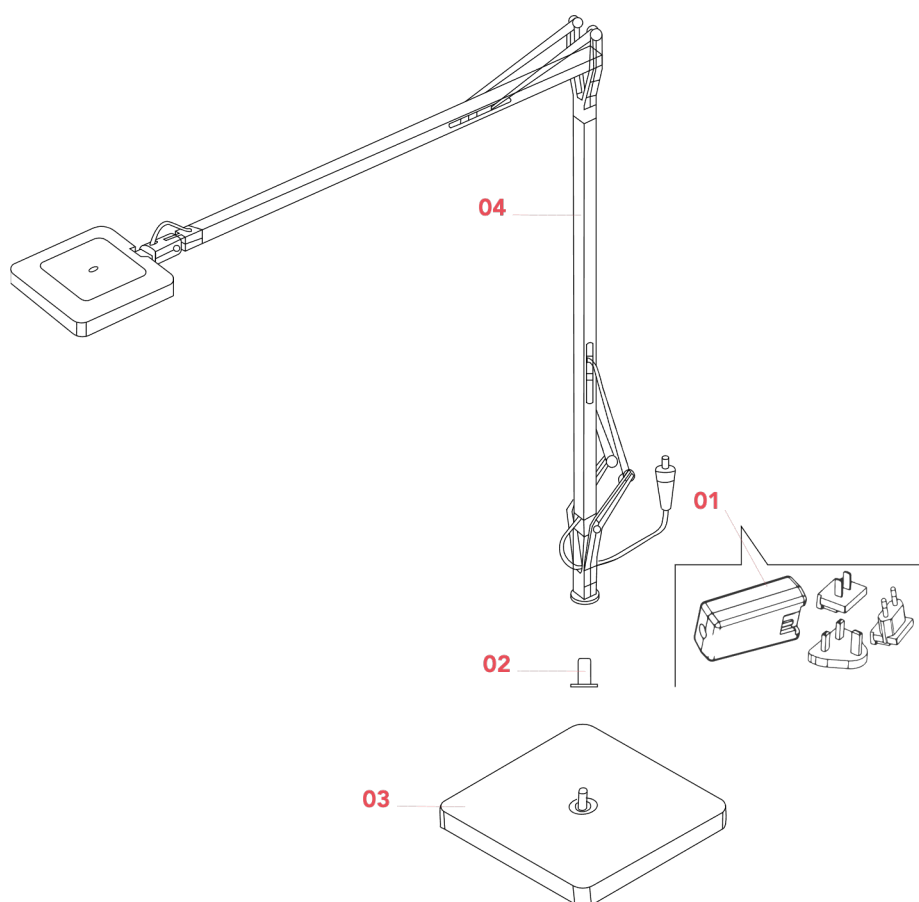
F3311033



KELVIN LED GM

F3311033

EN



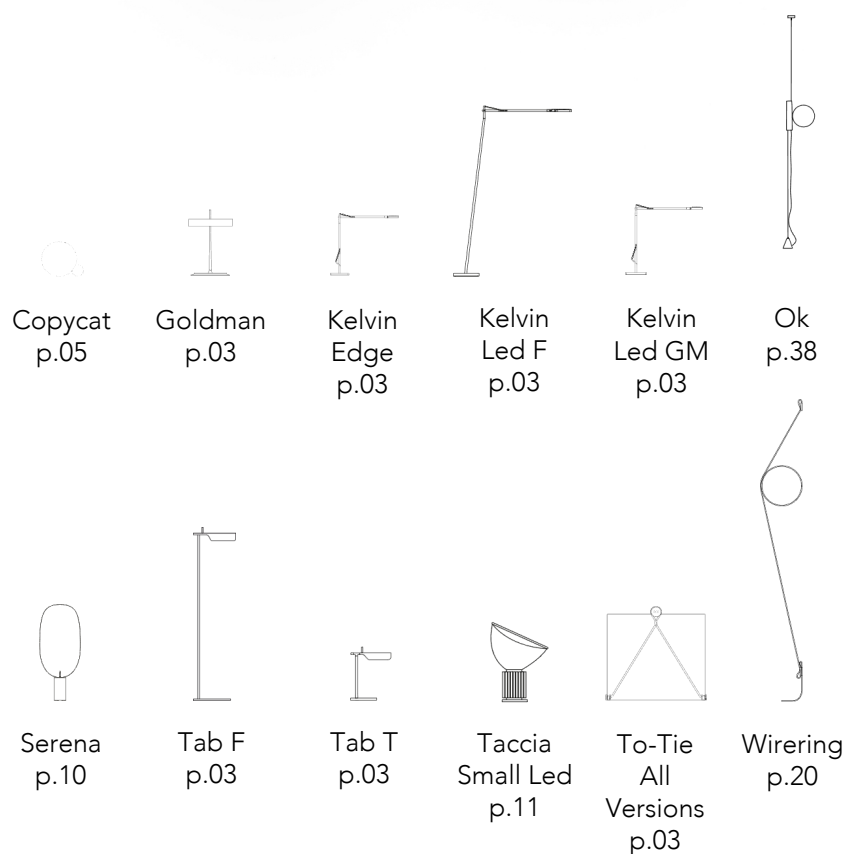
- 01. RF3320100 – Black Plug kit & driver
- 02. RF18764 – Black insert for lamp base
- 03. F3322033A – Kelvin Led anthracite base
- 04. F3312033A – Kelvin Led anthracite body

KELVIN LED GM F3311033

EN

RF3320100

BLACK PLUG KIT & DRIVER



WARNING! When installing and whenever acting on the appliance, ensure that the power supply has been switched off. For the installation of the spare-part, it is necessary to consult a qualified electrician.

KELVIN LED GM F3311033

EN

RF3320100

BLACK PLUG KIT & DRIVER

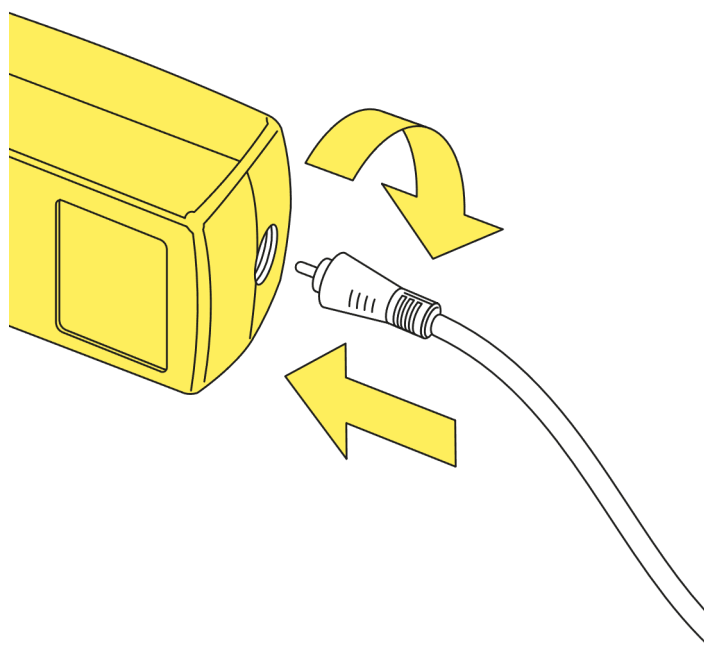


Fig.1

Insert the plug into the driver unit by using the guides snap it inside its apposite slot (use the correct type of plug for the area in which the device must be installed), connect the plug to the feeder unit locking it in by rotating it 90° clockwise.

WARNING! When installing and whenever acting on the appliance, ensure that the power supply has been switched off.
For the installation of the spare-part, it is necessary to consult a qualified electrician.

©2021 Flos - All rights reserved - www.flos.com
Flos reserves the right to introduce any changes to its own models, without prior notice.

KELVIN LED GM F3311033

EN

RF18764

BLACK INSERT FOR LAMP BASE



WARNING! When installing and whenever acting on the appliance, ensure that the power supply has been switched off.
For the installation of the spare-part, it is necessary to consult a qualified electrician.

©2021 Flos - All rights reserved - www.flos.com
Flos reserves the right to introduce any changes to its own models, without prior notice.

KELVIN LED GM F3311033

EN

RF18764

BLACK INSERT FOR LAMP BASE

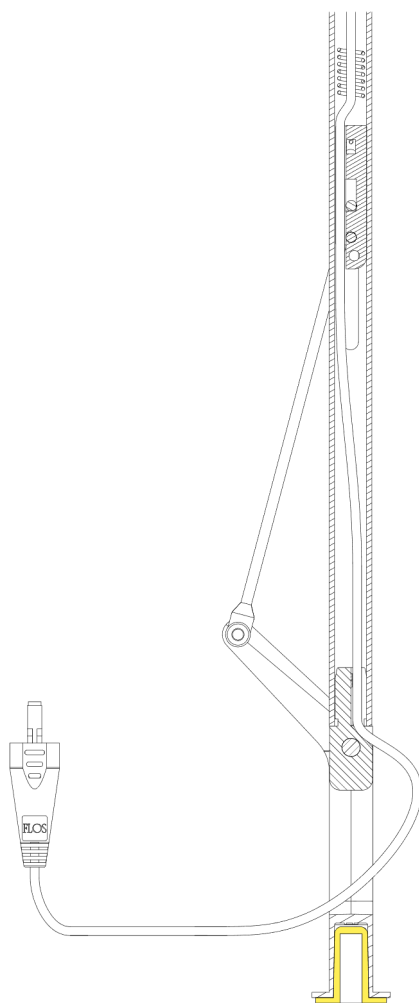


Fig.1

Glue the insert inside the lower joint by utilizing a bicomponent glue.

WARNING! When installing and whenever acting on the appliance, ensure that the power supply has been switched off.
For the installation of the spare-part, it is necessary to consult a qualified electrician.

©2021 Flos - All rights reserved - www.flos.com
Flos reserves the right to introduce any changes to its own models, without prior notice.

KELVIN LED GM F3311033

EN

F3322033A

KELVIN LED GM ANTHRACITE BASE



WARNING! When installing and whenever acting on the appliance, ensure that the power supply has been switched off.
For the installation of the spare-part, it is necessary to consult a qualified electrician.

©2021 Flos - All rights reserved - www.flos.com
Flos reserves the right to introduce any changes to its own models, without prior notice.

KELVIN LED GM F3311033

EN

F3322033A

KELVIN LED GM ANTHRACITE BASE

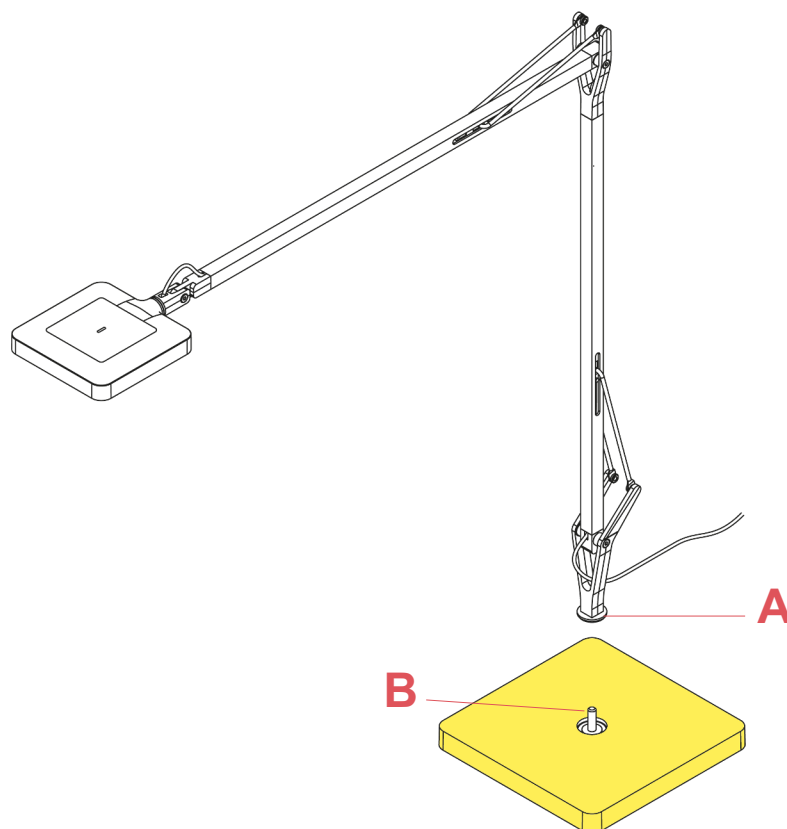


Fig.1

Insert the support (A) of the device into the pin (B) of the base.

WARNING! When installing and whenever acting on the appliance, ensure that the power supply has been switched off.
For the installation of the spare-part, it is necessary to consult a qualified electrician.

©2021 Flos - All rights reserved - www.flos.com
Flos reserves the right to introduce any changes to its own models, without prior notice.

KELVIN LED GM F3311033

EN

F3312033A

KELVIN LED GM ANTHRACITE BODY



WARNING! When installing and whenever acting on the appliance, ensure that the power supply has been switched off.
For the installation of the spare-part, it is necessary to consult a qualified electrician.

©2021 Flos - All rights reserved - www.flos.com
Flos reserves the right to introduce any changes to its own models, without prior notice.

KELVIN LED GM F3311033

EN

F3312033A

KELVIN LED GM ANTHRACITE BODY

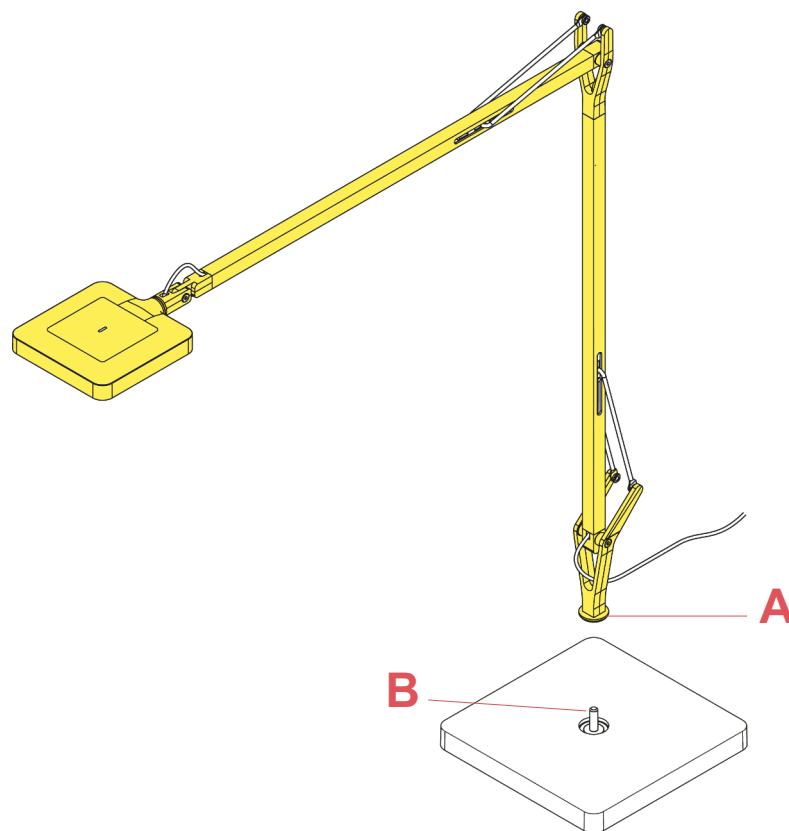


Fig.1

Insert the support (A) of the device into the pin (B) of the base.

WARNING! When installing and whenever acting on the appliance, ensure that the power supply has been switched off.
For the installation of the spare-part, it is necessary to consult a qualified electrician.